

ONE ADVENTURE | AN ISLAND | LIFETIME STORY

SRI LANKA

A THRILL-SEEKER'S PARADISE

FROM PEAKS TO WAVES

10 DAYS

9 NIGHTS

"Where Wealth Learns
Lessons from Happiness"



BY AZURE ISLAND TOURS LTD (UK)

84, UXBEIDGE ROAD, LONDON, W13 8RA

FOR MORE DETAILS

office@azureislandtours.co.uk

+4479 25073 959

www.azureislandtours.co.uk

Summary

10 DAYS | 9 NIGHTS

DAY 1-2 Rafts, Heights, and Trails: Kitulgala

LODGING **Moksha@Kitulgala**



- EXPERIENCES
- White Water Rafting
 - Base Jumping
 - Trekking
 - Ziplining

DAY 3 Climb, Cross & Conquer: Ella

LODGING **Hotel Morning Dew**



- EXPERIENCES
- Little Adam's Peak
 - Nine Arch Bridge
 - Calypso Train
 - Ella Rock Climbing

DAY 4 Undergrounds, Heights, and Camps

LODGING **Hotel Morning Dew**



- EXPERIENCES
- Pallewela Abseiling
 - Nil Diya Pokuna Cave Underground Exploration
 - Bambaragalapathana Camping

DAY 5 Waterfalls, Wildlife, and Wilderness: Yala

LODGING **Kithala Resort Tissa - Yala**



- EXPERIENCES
- Ravana Ella and Cave
 - Yala Morning Safari
 - Yala Night Safari and Glamping

DAY 6-8 Seas, Skies, and Shores: Down South

LODGING **The Habitat Kosgoda**



- EXPERIENCES
- Scuba Diving
 - Surf Lessons
 - Paragliding & Paramotoring
 - Madu River Safari
 - Coconut Tree Hills
 - Galle Fort

AYUBOWAN!

Welcome To Sri Lanka!

Summary

10 DAYS | 9 NIGHTS

Selectable Activities

Land Based

- EXPERIENCES**
- Gerandi Ella Extreme Hike (Pro)
 - Great Western Hike (Intermediate)
 - Hanthana Hike (Beginner)
 - Wilpattu and Yala Jungel Expedition with Night Stay (2 days)
 - Sri Padaya (Adam's Peak) trekking
 - Angampora
 - a
 - a

Water Based

- EXPERIENCES**
- Seruwavila Kayaking Tour (3 Days)
 - Snorkeling with the Blue Whales and Dolphins (Seasonal)
 - Deep Sea Shipwreck Diving
 - Snorkeling and Scuba Diving
 - Kite Surfing Masterclass (3 Days)
 - Surfing Camp (3 Days)
 - Cook Your Own Catch
 - Beach Camping at Jungle Beach

DAY 10 Departure Day

AYUBOWAN!

Welcome To Sri Lanka!

DAY 1 - 2

RAFTS, HEIGHTS, AND TRAILS: KITULGALA

Ayubowan!

Upon your arrival at the airport, proceed to Moksha@Kitulgala, where you can check in and spend the day unwinding in the serene atmosphere of your accommodation. Take this time to relax and rejuvenate in preparation for the adventures ahead. On the second day, set off in the morning for the Kitulgala Adventure Base Camp, a haven for thrill-seekers. Immerse yourself in an action-packed day filled with exhilarating activities, including white water rafting, base jumping, trekking through lush trails, water sliding, and ziplining across breathtaking landscapes. After an adrenaline-fueled day, return to your hotel for a well-deserved rest.



TRANSFER In Sedan

Bandaranaike International Colombo Airport

Moksha@Kitulgala

Adventure Base Camp

Moksha@Kitulgala



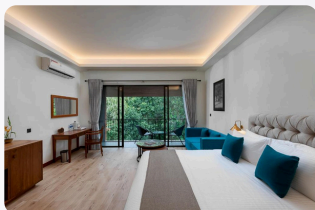
STAY Moksha@Kitulgala

Moksha@Kitulgala is a boutique eco-retreat set in five acres of private woodlands, offering a tranquil escape into nature. This sustainably designed sanctuary harmonizes with its rainforest surroundings, providing a peaceful space to relax and rejuvenate. Guests can explore nearby waterfalls, enjoy farm-to-table dining, and partake in adventurous activities like rafting and hiking, all while immersing in the natural beauty and serenity of Kitulgala.

Star Rating: ★★★★★

Amenities:

- Outdoor infinity pool
- Farm-to-table dining
- Eco-sustainability
- Wellness experiences
- Rainforest location
- Private balconies and views
- Complimentary Wi-Fi
- 24-hour room service
- Customizable excursions



ACTIVITIES & EXCURSIONS

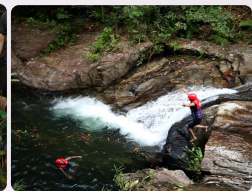
1 White Water Rafting

White water rafting in Kitulgala is an exhilarating adventure through the scenic Kelani River. Navigate thrilling rapids surrounded by lush rainforests, with moments of calm to take in the stunning landscapes. Perfect for thrill-seekers and nature lovers alike, this activity promises both excitement and unforgettable views in Sri Lanka's adventure capital.



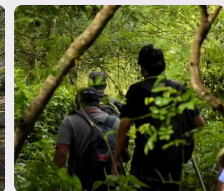
2 Base Jumping

Base jumping in Kitulgala is the ultimate adrenaline rush, offering a heart-pounding leap from towering cliffs into lush valleys below. Surrounded by stunning rainforests and dramatic landscapes, this extreme sport provides an unforgettable thrill for adventure enthusiasts. It's an unmatched way to experience Kitulgala's breathtaking scenery from an entirely new perspective.



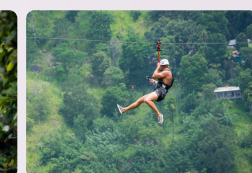
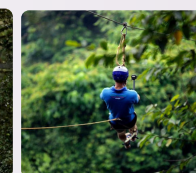
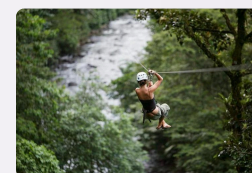
3 trekking

Trekking in Kitulgala takes you through lush rainforests, scenic trails, and serene waterfalls, offering a perfect blend of adventure and natural beauty. With pathways winding past vibrant flora and fauna, the journey immerses you in the area's tropical charm. Ideal for nature enthusiasts, it's a peaceful yet invigorating escape into Sri Lanka's wilderness.



4 Ziplining

Ziplining in Kitulgala offers an exhilarating ride through the treetops, soaring above lush forests and the tranquil Kelani River. The adrenaline rush and stunning views of the surrounding landscape make it an unforgettable adventure. Perfect for thrill-seekers, it's a unique way to experience the beauty of Kitulgala from a thrilling new height.



DAY 3

CLIMB, CROSS & CONQUER: ELLA

After breakfast at your hotel, embark on a scenic journey to the majestic Little Adam's Peak, where you can enjoy a moderate hike and be rewarded with stunning views of the surrounding landscapes. Next, experience the thrill of the Flying Ravana zipline, soaring through the air for an unforgettable adrenaline rush. Continue your adventure with a visit to the iconic Nine Arch Bridge, a marvel of colonial-era architecture, set against the lush greenery. Later, embark on a charming Calypso Train ride, offering picturesque views as you travel through the picturesque countryside. End your day with a challenging yet rewarding climb to Ella Rock, where you'll be treated to panoramic vistas of Ella's natural beauty. Afterward, return to your hotel to relax and unwind.

TRANSFER In Sedan

- Moksha@Kitulgala
- Little Adam's Peak
- Flying Ravana
- Nine Arch Bridge
- Calypso Train
- Ella Rock Climbing
- Hotel Morning Dew

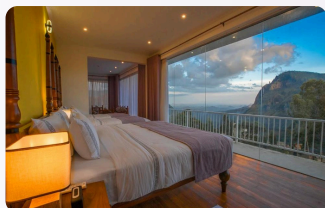
STAY Hotel Morning Dew

Nestled in the hills of Ella, Morning Dew Hotel offers a peaceful retreat with stunning mountain views. This 3-star hotel provides a cozy atmosphere and is just a short walk from the town, perfect for guests seeking tranquility and easy access to local attractions

Star Rating: ★★★★★

Amenities:

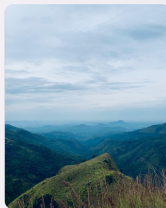
- Outdoor swimming pool
- Multiple dining options
- Bar & lounge
- Laundry Service
- Breathtaking Views
- Stunning Mountain Views
- Complimentary Wi-Fi
- 24-hour room service
- On-site parking



ACTIVITIES & EXCURSIONS

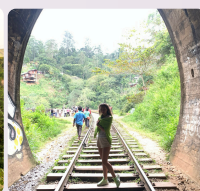
1 Little Adam's Peak

Little Adam's Peak offers a captivating journey through tea plantations, with a gentle hike leading to breathtaking panoramic views of Ella's rolling hills and valleys. As you reach the summit, the beauty of the landscape surrounds you, filling you with a sense of peace and accomplishment. It's a perfect blend of adventure and serenity, where nature's splendor unfolds with every step.



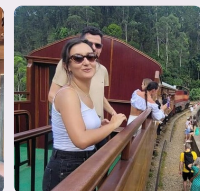
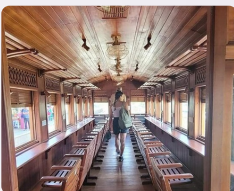
2 Nine Arch Bridge

The Nine Arch Bridge is a stunning architectural masterpiece nestled in the heart of Ella's lush forests. As you stand before its majestic stone arches, surrounded by mist and greenery, the sight of a train gracefully crossing feels almost magical. This iconic bridge, a testament to Sri Lanka's colonial past, offers both awe-inspiring views and a deep sense of wonder, blending nature and history in perfect harmony.



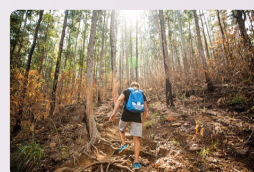
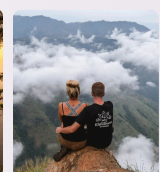
3 Calypso Train

The Calypso Train ride in Ella offers a scenic journey through Sri Lanka's picturesque highlands. As the train winds through lush tea plantations, misty mountains, and charming villages, you'll be treated to breathtaking views at every turn. It's a peaceful yet captivating experience that showcases the natural beauty of Ella from the comfort of a charming, nostalgic train ride.



4 Ella Rock Climbing

Ella Rock climbing offers an adventurous ascent with rewarding panoramic views at the summit. As you hike through lush forests and rocky terrain, the challenge is met with stunning vistas of the surrounding valleys and tea plantations. It's an invigorating experience for adventure seekers, blending physical challenge with the beauty of Ella's landscape.





DAY 4

UNDERGROUND, HEIGHTS, AND CAMPS

Start your day with an exciting adventure as you head to Pallewela for an exhilarating abseiling experience. Feel the rush as you descend the rock faces, surrounded by the breathtaking beauty of nature. Next, embark on a fascinating underground exploration at Nil Diya Pokuna Cave, where you'll uncover the mysteries of this stunning natural formation. As you journey through the cool, dark corridors, you'll be amazed by the cave's unique stalactites and stalagmites. In the afternoon, head to Bambaragalapathana for an immersive camping experience, where you can relax under the stars and enjoy the serene atmosphere of the wilderness. After a day filled with adventure and nature, return to your hotel for a well-deserved rest.

TRANSFER In Sedan

- Hotel Morning Dew
- Pallewela Abseiling
- Nil Diya Pokuna Cave underground Exploration
- Bambaragalapathana Camping
- Hotel Morning Dew

STAY Hotel Morning Dew

Nestled in the hills of Ella, Morning Dew Hotel offers a peaceful retreat with stunning mountain views. This 3-star hotel provides a cozy atmosphere and is just a short walk from the town, perfect for guests seeking tranquility and easy access to local attractions

Star Rating: ★★★★★

Amenities:

- Outdoor swimming pool
- Multiple dining options
- Bar & lounge
- Laundry Service
- Breathtaking Views
- Stunning Mountain Views
- Complimentary Wi-Fi
- 24-hour room service
- On-site parking



ACTIVITIES & EXCURSIONS

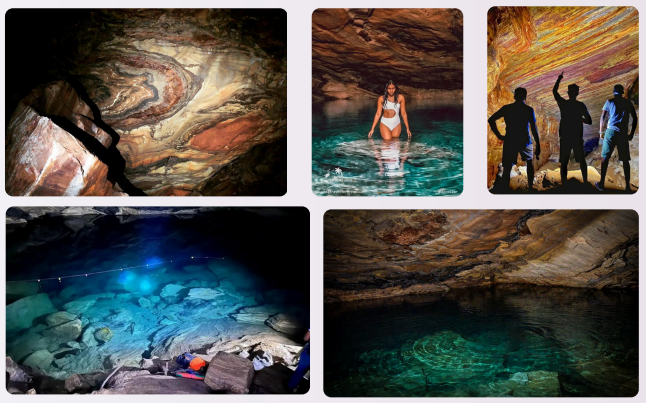
1 Pallewela Abseiling

Pallewela Abseiling is an adrenaline-pumping adventure that allows you to rappel down dramatic cliffs, surrounded by lush forests and cascading waterfalls. As you descend, the cool mist from the waterfalls and the stunning panoramic views of the valley below create an exhilarating experience. This thrilling activity offers both a physical challenge and a chance to connect with nature in a unique way, making it an unforgettable journey for adventure seekers and nature lovers alike.



2 Nil Diya Pokuna Cave Underground Exploration

Nil Diya Pokuna Cave Underground Exploration offers a fascinating journey into the depths of Sri Lanka's hidden natural wonders. As you venture through the cave, you'll encounter awe-inspiring rock formations, crystal-clear underground pools, and ancient stalactites and stalagmites. The cool, mysterious atmosphere and the beauty of the cave's interior create a truly unique adventure, making it a must-visit for those seeking to explore Sri Lanka's lesser-known, mystical landscapes.



3 Bambaragalapathana Camping

Bambaragalapathana Camping offers an unforgettable escape into nature, nestled in the heart of Sri Lanka's lush highlands. Surrounded by verdant forests, rolling hills, and tranquil streams, this camping experience provides the perfect setting for adventure and relaxation. Enjoy hiking through scenic trails by day, and as night falls, gather around a cozy campfire under a starry sky, listening to the sounds of nature. The peaceful atmosphere and breathtaking surroundings make it an ideal retreat for nature lovers and outdoor enthusiasts looking to reconnect with the wild.





DAY 5

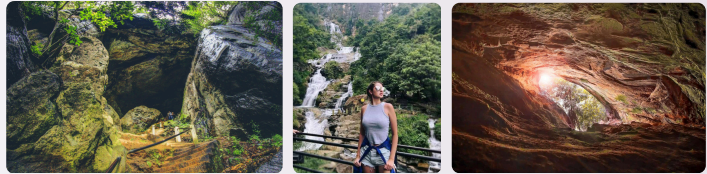
WATERFALLS, WILDLIFE, AND WILDERNESS: YALA

Start your day with a visit to Ravana Ella, a stunning waterfall steeped in legend and natural beauty. Admire the cascading waters and enjoy the serene surroundings before exploring the nearby Ravana Cave, a site tied to ancient folklore and offering a glimpse into Sri Lanka's rich history. In the afternoon, journey to Yala for an exciting morning safari. Immerse yourself in the park's diverse landscapes as you search for leopards, elephants, and an array of other wildlife species in their natural habitat. After the safari, take some time to relax and refresh at your hotel. As night falls, set off on a thrilling Yala night safari, where the park comes alive with nocturnal creatures under the starlit sky. Conclude your adventure-filled day with a cozy stay at Kithala Hotel, where you can unwind and recharge for the next day.

ACTIVITIES & EXCURSIONS

1 Ravana Ella and Cave

Ravana Ella and Cave offer a perfect blend of natural beauty and mythical allure. The majestic Ravana Falls cascades down rocky cliffs, creating a breathtaking sight surrounded by lush greenery. Nearby, the Ravana Cave invites exploration, steeped in legend as the hiding place of Sita in the epic Ramayana. Together, these landmarks provide a unique mix of adventure, history, and stunning scenery, making them a must-visit for nature lovers and mythology enthusiasts alike.



2 Yala Morning Safari

A Yala Morning Safari promises an exhilarating adventure through Sri Lanka's most famous wildlife sanctuary. As dawn breaks, the park comes alive with the sights and sounds of nature, offering the chance to spot elusive leopards, majestic elephants, and a variety of vibrant bird species. The golden morning light enhances the stunning landscapes, creating a magical experience for wildlife enthusiasts and photographers alike. It's the perfect way to connect with the raw beauty of the wilderness.



3 Yala Night Safari and Glamping

A Yala Night Safari combined with treetop glamping offers an extraordinary adventure in the heart of the wilderness. Begin with an exciting nighttime safari, where elusive leopards, civets, and owls come to life under the starlit sky. After the thrill of exploring Yala's nocturnal world, retreat to a cozy treetop glamping spot, surrounded by the sounds of nature. Elevated among the trees, this serene experience blends luxury and adventure, creating unforgettable memories in the wild.



TRANSFER In Sedan

- Hotel Morning Dew
- Ravana Ella and Cave
- Yala Morning Safari
- Yala Night Safari and Glamping
- Kithala Resort Tissa - Yala

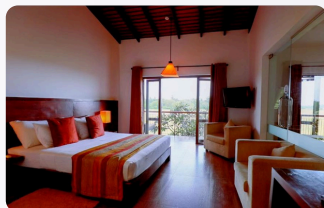
STAY Kithala Resort Tissa - Yala

Kithala Resort, located near Yala National Park, offers a peaceful retreat surrounded by scenic paddy fields. With spacious rooms and balconies, guests can relax in nature or explore nearby attractions like Yala Safari and Kataragama, making it an ideal blend of comfort and adventure.

Star Rating: ★★★★★

Amenities:

- Outdoor swimming pool
- On-Site Restaurant
- Bar & lounge
- Eco-Friendly Focus
- Cultural Excursions
- Scenic Paddy Field Views
- Complimentary Wi-Fi
- 24-hour room service
- Yala Safari Services



DAY 6-8

SEAS, SKIES, AND SHORES: DOWN SOUTH

In the morning, you'll visit Coconut Tree Hills, where lush green hills meet stunning ocean views, creating a perfect backdrop for leisurely walks. Next, head to Dewata Beach, a surfer's paradise known for its consistent waves. Whether you're a novice or an expert, you'll enjoy catching some thrilling surf under the warm sun. In the afternoon, explore Galle Fort, a UNESCO World Heritage Site, where you can stroll along the historic ramparts, discover charming cafes, and soak in the vibrant atmosphere that blends colonial heritage with modern culture.



TRANSFER

In Sedan

Kithala Resort Tissa - Yala

Surf Lessons

Scuba Diving

Paragliding & Paramotoring

Madu River Safari

Galle Fort

Hotel Morning Dew



STAY

The Habitat Kosgoda

Located along Sri Lanka's southern coast, The Habitat Kosgoda offers a tranquil retreat by the beach. Surrounded by the beauty of the Indian Ocean and lush coconut groves, this elegant hotel combines contemporary design with serene coastal charm, making it the perfect getaway for relaxation and rejuvenation.

Star Rating: ★★★★★

Amenities:

- Outdoor pool
- Multiple dining options
- Bar & lounge
- Fitness center
- Spacious rooms with river/garden views
- Ayurvedic spa
- Complimentary Wi-Fi
- 24-hour room service
- Conference facilities



ACTIVITIES & EXCURSIONS

DAY 6

1 Scuba Diving

Scuba diving in Sri Lanka is an unforgettable adventure, offering access to some of the most diverse and pristine underwater ecosystems in the Indian Ocean. Dive into crystal-clear waters to explore vibrant coral reefs, colorful marine life, and even ancient shipwrecks that tell stories of the island's rich maritime history. Whether you're a beginner or an experienced diver, Sri Lanka's diving spots cater to all levels, providing encounters with schools of fish, graceful sea turtles, and even elusive reef sharks. With its unparalleled marine biodiversity, scuba diving here promises an exciting and immersive experience beneath the waves.



2 Surf Lessons (4 Hours)

Surf lessons in Sri Lanka provide the perfect introduction to the world of surfing, whether you're a complete beginner or looking to sharpen your skills. With experienced instructors who focus on technique, balance, and ocean safety, you'll quickly progress and gain confidence in the water. The island's stunning beaches and consistent waves create an ideal environment for learning, while each lesson offers a unique experience tailored to your level. Whether you're catching your first wave or perfecting your surf style, Sri Lanka offers an unforgettable surfing adventure amidst breathtaking coastal beauty.



DAY 6 - 8

SEASIDE HERITAGE: GALLE EXPERIENCE

ACTIVITIES & EXCURSIONS

DAY 7

1 Paragliding & Paramotoring

Soar high above the beautiful Bentota coastline on a paramotoring adventure that promises an unforgettable experience. As you ascend, enjoy panoramic views of the golden beaches stretching along the coast, lush green forests, and meandering rivers. The thrill of gliding through the air at over 1,000 feet offers a unique perspective of the region's diverse landscapes. Whether you're a first-time flyer or an experienced adventurer, this exhilarating flight provides the perfect blend of excitement and tranquility, making it a must-try experience for anyone seeking a new way to explore Sri Lanka.



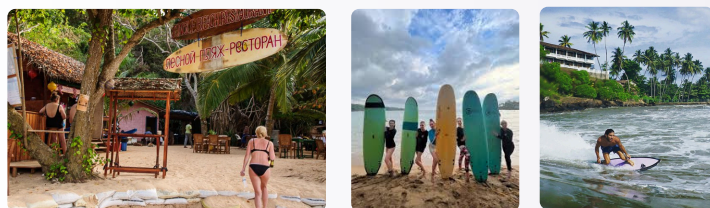
2 Madu River Safari

Embark on a serene Madu River safari and discover a hidden world of lush mangrove forests, tranquil waterways, and abundant wildlife. Glide along the river, spotting colorful birds, water monitors, and the occasional playful monkey. The journey takes you through a labyrinth of islands, with stops at ancient temples and local fish farms, allowing you to immerse in both nature and culture. The peaceful ambiance, coupled with the stunning landscape, makes this an unforgettable eco-tourism experience.



3 Surf Lessons (4 Hours)

Surf lessons in Sri Lanka provide the perfect introduction to the world of surfing, whether you're a complete beginner or looking to sharpen your skills. With experienced instructors who focus on technique, balance, and ocean safety, you'll quickly progress and gain confidence in the water. The island's stunning beaches and consistent waves create an ideal environment for learning, while each lesson offers a unique experience tailored to your level. Whether you're catching your first wave or perfecting your surf style, Sri Lanka offers an unforgettable surfing adventure amidst breathtaking coastal beauty.

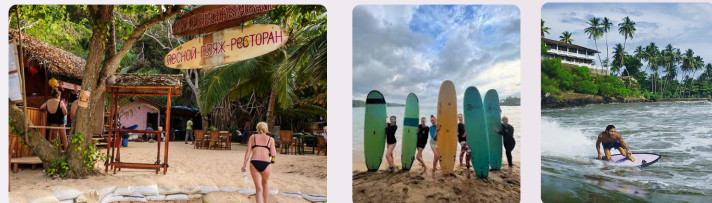


ACTIVITIES & EXCURSIONS

DAY 8

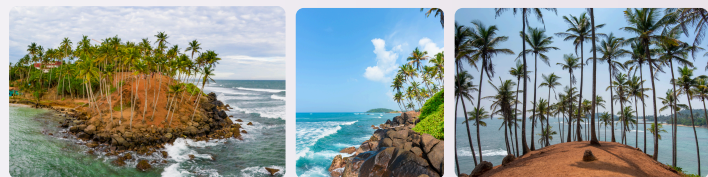
1 Surf Lessons (4 Hours)

Surf lessons in Sri Lanka provide the perfect introduction to the world of surfing, whether you're a complete beginner or looking to sharpen your skills. With experienced instructors who focus on technique, balance, and ocean safety, you'll quickly progress and gain confidence in the water. The island's stunning beaches and consistent waves create an ideal environment for learning, while each lesson offers a unique experience tailored to your level. Whether you're catching your first wave or perfecting your surf style, Sri Lanka offers an unforgettable surfing adventure amidst breathtaking coastal beauty.



2 Coconut Tree Hills

Coconut Tree Hills is a stunning landscape where emerald-green terraces rise dramatically against the backdrop of the azure sea. This picturesque spot, dotted with swaying coconut palms, offers breathtaking views and a tranquil atmosphere that invites relaxation and exploration. Perfect for photography enthusiasts and nature lovers alike, it's an idyllic setting that showcases the natural beauty of Sri Lanka's coastline, making it a must-visit destination for those seeking peace and serenity.



3 Galle Fort

Step into history as you wander through the cobbled streets of Galle Fort, a UNESCO World Heritage site that beautifully blends colonial architecture with stunning ocean views. Built by the Portuguese in the 16th century and later fortified by the Dutch, this enchanting fort boasts ancient ramparts, a charming lighthouse, and vibrant boutiques. Discover the rich history and culture of this coastal gem, where every corner tells a story waiting to be uncovered. Get ready for an unforgettable adventure!



OTHER SELECTABLE LAND BASED

ADDITIONAL SELECTABLE ACTIVITIES & EXCURSIONS

1 Gerandi Ella Extreme Hike (Pro)

The Gerandi Ella Extreme Hike is a thrilling adventure through rugged terrain and misty forests, leading to the stunning Gerandi Ella waterfall. This challenging trail rewards trekkers with breathtaking views and a deep connection to Sri Lanka's untamed natural beauty, perfect for adventure seekers.



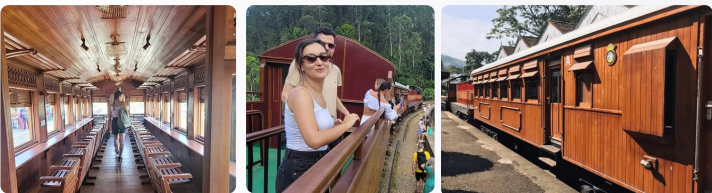
2 Great Western Hike (Intermediate)

The Great Western Hike offers a thrilling mix of adventure and stunning scenery as you climb one of Sri Lanka's highest peaks. The journey takes you along winding trails through tea plantations, cloud forests, and steep ridges, with the reward of panoramic views stretching to distant mountains and valleys. This intermediate trek promises a satisfying challenge for hikers seeking a highland adventure.



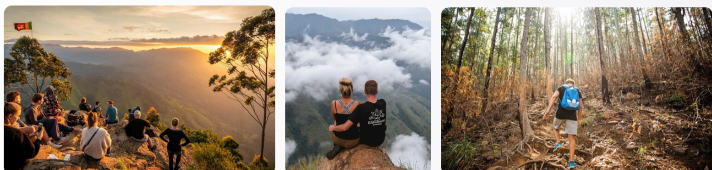
3 Hanthana Hike (Beginner)

The Hanthana Hike weaves through a chain of verdant peaks, offering an exhilarating blend of steep ascents and rolling trails. With views that alternate between lush valleys, misty forests, and bustling Kandy below, this trek is both visually rewarding and rich in biodiversity. Perfect for those craving an adventure close to nature, the Hanthana range promises a dynamic hiking experience.



4 Wilpattu and Yala Jungel Expedition with Night Stay (2 days)

The Wilpattu and Yala Jungle Expedition offers an extreme off-road adventure, with two nights spent deep within Sri Lanka's wild heart. Surrounded by the eerie roars of leopards, your camp is lit only by candle and starlight, immersing you in the jungle's raw beauty. This unforgettable experience combines rugged trails, untamed wildlife, and the thrill of sleeping under the stars in the wildest corners of Sri Lanka.



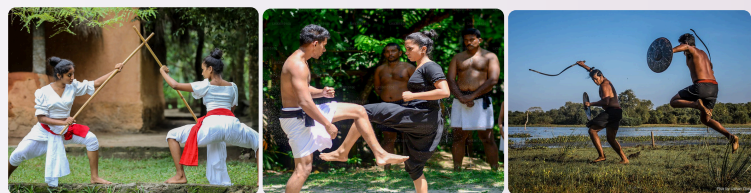
5 Sri Padaya (Adam's Peak) trekking

Sri Padaya (Adam's Peak) Trekking is a spiritually charged adventure, where pilgrims and trekkers alike ascend through misty forests to reach the sacred summit. As you climb, the air thickens with anticipation, leading to a breathtaking sunrise view. The peak, believed to hold the footprint of Buddha, offers panoramic views and a sense of accomplishment, making this challenging trek a deeply rewarding journey for both body and soul.



6 Angampora

Angampora offers an exhilarating journey into Sri Lanka's ancient martial art. Learn the techniques of this centuries-old combat style, which combines physical strength with mental discipline. Under the guidance of skilled masters, you'll discover the secrets of Angampora through training in weaponry, hand-to-hand combat, and unique strategies. This cultural experience not only offers physical challenges but also immerses you in Sri Lanka's rich heritage and warrior traditions.



7 Calypso Train

more acts



8 Ella Rock Climbing

more acts

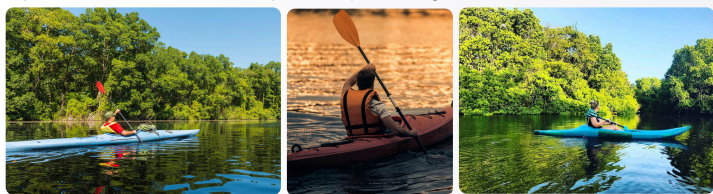


SELECTABLE WATER BASED

ADDITIONAL SELECTABLE ACTIVITIES & EXCURSIONS

1 Seruwavila Kayaking Tour (3 Days)

The Seruwavila Kayaking Tour offers an exhilarating journey through serene waterways surrounded by lush mangroves and tranquil landscapes. Paddle your way past historic sites and diverse wildlife, immersing yourself in the natural and cultural beauty of the area. Whether gliding over calm waters or navigating gentle currents, this adventure promises a perfect blend of exploration and relaxation in a picturesque setting.



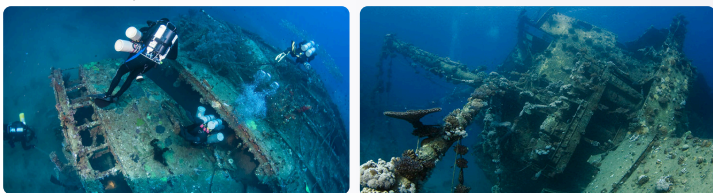
2 Snorkeling with the Blue Whales and Dolphins (Seasonal)

Snorkeling with Blue Whales and Dolphins offers an awe-inspiring adventure in the deep blue waters of Sri Lanka. Dive into a world of wonder as you swim alongside graceful dolphins and the majestic giants of the ocean. The experience combines thrilling encounters with marine life and the serene beauty of the underwater realm, making it a once-in-a-lifetime journey for ocean enthusiasts and adventurers alike.



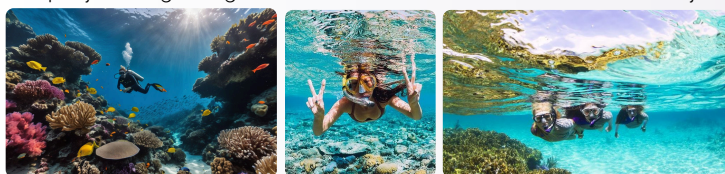
3 Deep Sea Shipwreck Diving

Deep Sea Shipwreck Diving offers a thrilling descent into the mysteries of the ocean's past. Explore sunken vessels teeming with vibrant marine life, where history meets the underwater beauty of coral-encrusted ruins. As you glide through these hauntingly beautiful wrecks, the sense of adventure and discovery is unparalleled, making it a must-try for experienced divers and underwater explorers.



4 Snorkeling and Scuba Diving

Snorkeling and Scuba Diving in Sri Lanka offer a thrilling exploration of underwater beauty. Snorkeling lets you glide over vibrant coral reefs, encountering colorful fish and marine life. For those seeking more adventure, scuba diving reveals hidden shipwrecks and thriving ecosystems, where deep-sea wonders await. Both activities provide a perfect blend of excitement and tranquility, offering unforgettable encounters with the ocean's rich biodiversity.



5 Kite Surfing Masterclass (3 Days)

The Kite Surfing Masterclass offers an adrenaline-fueled adventure, where you can master the art of riding the waves with the power of the wind. Under the guidance of expert instructors, you'll learn essential skills to control the kite and ride the surf with confidence. With the ocean as your playground, this high-energy experience promises excitement, challenge, and a rush of exhilaration for adventure seekers.



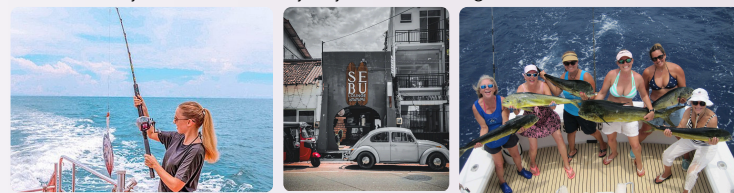
6 Surfing Camp (3 Days)

The 3-Day Surfing Camp offers an action-packed opportunity to catch the perfect wave, whether you're a beginner or looking to refine your skills. Over three days, expert instructors will guide you through the fundamentals of surfing or help elevate your technique. Set against the backdrop of pristine beaches and powerful waves, this camp combines adventure, fun, and the thrill of riding the surf in a short but unforgettable experience.



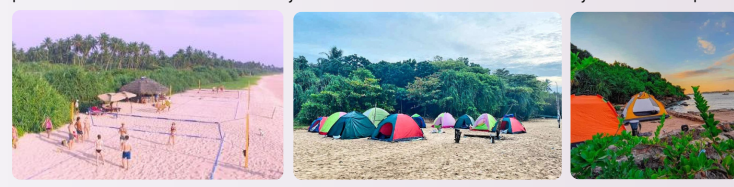
7 Cook Your Own Catch

The 'Cook Your Own Catch' experience lets you reel in your fish and then hand it over to world-class chefs at Sebu Lounge, who will prepare it to perfection. Enjoy the thrill of catching your meal and the satisfaction of having it cooked with expert skill, combining adventure with culinary excellence. This unique experience offers a delicious and unforgettable taste of local flavors, all while surrounded by the natural beauty of your surroundings.



8 Beach Camping at Jungle Beach

Beach Camping at Jungle Beach offers the perfect blend of adventure and tranquility. Set up camp by the pristine shore, surrounded by jungle and the soothing sound of waves crashing. Spend your days swimming, exploring, or simply relaxing under the sun, and enjoy cozy nights around a campfire under a starlit sky. This immersive experience brings you closer to nature, providing a peaceful retreat with the beauty of the ocean and wilderness at your doorstep.



For Your Information

Package Inclusions

Meet, greet, and assist on arrival & assist on departure

*Accommodation on a Breakfast and Dinner basis in Kandy, Sigiriya, Ella, Kosgoda, Colombo

Day 3 Lunch Is Included

Transportation by an A/C Luxury SUV driven by an English-speaking chauffeur guide

Porterage at the airport and all hotels

Entrance fees at all visiting sites as per the given itinerary

You are free to choose any other additional activity mentioned above for the best price in the market based on availability.

Package Exclusions

Entry Visa to Sri Lanka

Nil Diya Pokuna Excursion is optional in Ella. Please let us know if you would like to participate

Meals Not Mentioned

Alcoholic and non-alcoholic beverages at all hotels

Gratuities

Items of personal nature such as laundry, telephone calls, tipping etc

Any international or domestic Airfares

Value additions

500 ml mineral water bottle x 2 per person per day while traveling

2x free King Coconuts when you are buring like a fish in the soaring Tropical sun

Special Remarks

1. Dress Code for Religious Places: -

Cover your knees and shoulders when visiting religious places;

Female - Should wear long skirts, dresses or loose trousers and modest blouses.

Male - Should wear long trousers.

Remove your shoes and hats when entering at all religious places.

2. It might be difficult to walk barefoot in some places of the temple and in some places, the garden is paved with stone slabs or sand and temperature can be really high during the day. Therefore, take a pair of socks all the time with you and wear it as you enter.

Note: Driving times mentioned are an approximate measure of the time taken to travel between destinations. Please note that these times are subject to change depending on road traffic on the particular day, weather conditions as well as conditions of the particular road, all of which are beyond our control.

AZURE ISLAND TOURS LTD (UK)

Thank You

"Find your Tropical Paradise"

Contact US

office@azureislandtours.co.uk

+4479 25073 959

www.azureislandtours.co.uk