




BESPOKE TOUR FOR 16 DAYS, 15 NIGHTS



At **Azure Island Tours**, we're dedicated to creating exceptional travel experiences that cater to your individual needs. Our team of travel experts takes the time to understand your preferences, ensuring every trip is unique, personalized, and hassle-free. Whether you're after adventure, relaxation, or cultural immersion, we design every detail with you in


BOOK NOW

DAY 01:

NEGAMBO / WAIKKALA

- > ARRIVE AT SRI LANKA, BANDARANAIKE INTERNATIONAL AIRPORT
- > YOU WILL BE TRANSFERRED TO YOUR HOTEL IN NEGAMBO
- > CHECK IN AT HOTEL AND RELAX
- > DINNER & OVER NIGHT AT THE SELECTED HOTEL.
- > AFTER BREAKFAST CHECK OUT FROM HOTEL AND TRANSFER TO ANURADHAPURA.



DAY 02:

ANURADHAPURA

JEEP SAFARI IN VILLUPATTU NATIONAL PARK.

- Welcome to the lush wilderness
Ranging over 131 thousand hectares.
- It is Sri Lanka's largest and one of the oldest protected areas.
- This spans across the Puttalam and Anuradhapura districts, and borders the Mannar and Vavuniya Districts.
- The area is one of the most important elephant habitats in the country and is also a great place to observe the elusive Sri Lankan leopard and the sloth bear.
- This park has a denser forest cover unlike many other National Parks in Sri Lanka.



- WNP's landscape comprises of dry zone forests and thorny scrub interspersed with extensive open plains, sand dunes and the unique Villu wetlands. Bare reddish cliffs rising abruptly from narrow beaches of the Portugal Bay and Dutch Bay are another striking feature of its landscape.



- DINNER AND OVERNIGHT AT THE SELECTED HOTEL IN ANURADHAPURA.

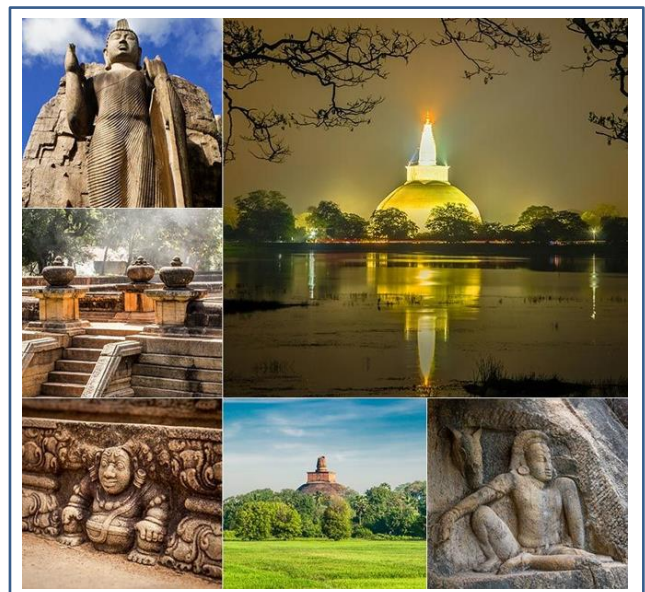
DAY 03:

ANURADHAPURA

- > AFTER BREAKFAST AT THE HOTEL.
- > ANURADHAPURA CITY TOUR.
- > VISIT SRI MAHABODHI AND ISURUMUNIYA.
- > EVENING VISIT TO MIHINTALE ANCIENT CITY

SACRED CITY ANURADHAPURA

- Anuradhapura, a Ceylonese political and religious capital that flourished for 1,300 years, Hidden away in dense jungle for many years, the splendid site, with its palaces, monasteries and monuments, is now accessible once again.
- The glories of that age can be found in the archaeological treasures that still give a pretty good idea of how the city looked in its heyday.

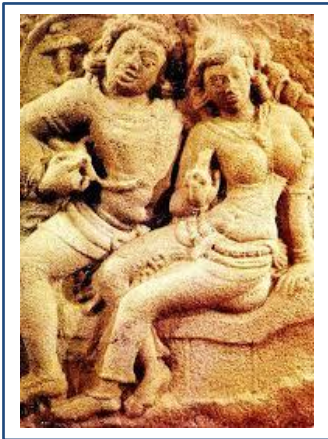


SRI MAHABODHI

- This is believed to be a tree grown from a cutting of the southern branch from the historical sacred bo tree, Sri Maha Bodhi, which was destroyed during the time of Emperor Ashoka the Great, at Buddha Gaya in India, under which Siddhartha Gautama (Buddha) attained Enlightenment.



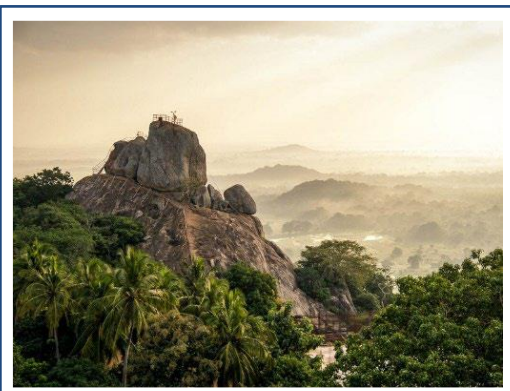
ISURUMUNIYA TEMPLE



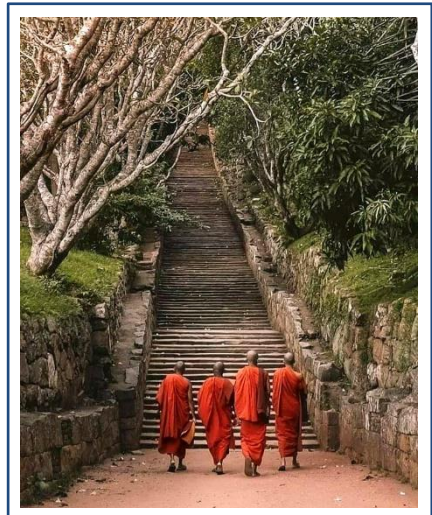
- Isurumuniya is a Buddhist temple has been built by King Devanam Piyatissa between 250 – 210 BC.
- There are four carvings of special interest in this Vihara. They are the Isurumuniya Lovers, Elephant Pond and The Royal Family.

EVENING VISIT TO MIHINTALE ANCIENT CITY.

- Mihintale is a mountain peak near Anuradhapura in Sri Lanka. It is believed by Sri Lankans to be the site of a meeting between the Buddhist monk Mahinda and King Devanampiyatissa



- which inaugurated the presence of Buddhism in Sri Lanka. It is now a pilgrimage site, and the site of several religious monuments and abandoned structures.



> DINNER AND OVERNIGHT AT THE SELECTED HOTEL

DAY 04:

JAFFNA

- > AFTER BREAKFAST CHECK OUT FROM THE HOTEL AND TRANSFER TO JAFFNA.
- > CHECK IN THE HOTEL AND RELAX.
- > DINNER AND OVERNIGHT STAY IN SELECTED HOTEL.



DAY 05:

JAFFNA

- > BREAKFAST AT THE HOTEL
- > VISIT NAGADEEPA TEMPLE.

NAGADEEPA TEMPLE

- Nagadeepa Purana Vihara is an ancient Buddhist temple. It is among the country's sixteen holiest Buddhist shrines.
- According to contemporary history, the Gautama Buddha visited the site after five years of attaining Enlightenment to settle the dispute between two warring Naga kings, Chulodara and Mahodara.
- You will be going on boat to the island.



- > RETURN TO THE HOTEL, GET THE DINNER AND OVER NIGHT STAY AT THE SELECTED HOTEL IN KADY.

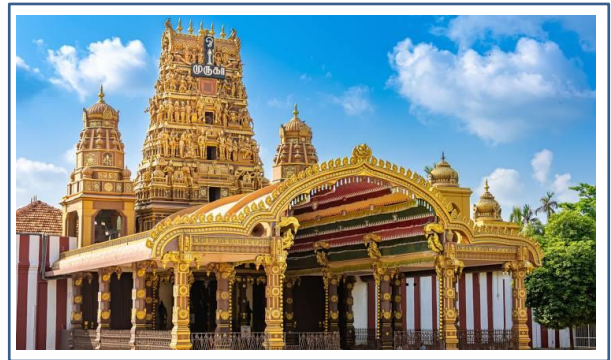
DAY 06:

TRINCOMALEE

> AFTER THE BREAKFAST CHECK OUT FROM THE HOTEL AND TRANSFER TO TRINCOMALEE.

JAFNA CITY TOUR

- Jaffna is a city on the northern tip of Sri Lanka. Nallur Kandaswamy is a huge Hindu temple with golden arches and an ornate gopuram tower.
- By the coast, star-shaped Jaffna Fort was built by the Portuguese in the 17th century and later occupied by the Dutch and British.



- Jaffna Public Library is a symbol of the city's post-war regeneration. Jaffna Archaeological Museum has Dutch cannons and pre-colonial artifacts.



> DINNER AND OVERNIGHT STAY IN TRINCOMALEE BEACH HOTEL.

DAY 07:

TRINCOMALEE

- > MORNING 6.00 A.M. START WHALES AND DOLPHIN WATCHING.
- > (BREAKFAST CAN ARRANGE TAKE AWAY OR LATER)

WHALES AND DOLPHIN WATCHING

- It is a whale of a time in the east coast since the sandy beaches and deep waters of Trincomalee give rise to some excellent dolphin and whale sightings, particularly during the months of March to May but also random sightings till September



SNORKELING AND DIVING

- Snorkeling in Nilaveli & Trincomalee area is the absolute highlight of your stay on the east coast. You experience the most vibrant coral reefs of Sri Lanka, soft and hard corals, schools of colorful fish and different coral fish of the Indian Ocean.



- > DINNER AND OVERNIGHT STAY IN SELECTED HOTEL.

DAY 08:

HABARANA

- > AFTER THE BREAKFAST CHECK OUT AT THE HOTEL AND TRANSFER TO HABARANA
- > EVENING RELAX AT HOTEL.
- > DINNER AND OVERNIGHT AT SELECTED HOTEL.

OPTIONAL:

- Jeep safari to minneriya national park
- These national parks in habarana are the best places in the country to see the wild elephants
- Which are often present in huge no of elephants.



DAY 09:

HABARANA

- > AFTER BREAKFAST AT THE HOTEL.
- > VISIT SEEGIRIYA LIONS ROCK (OPTIONAL)
- Sigiriya Lion Rock is an ancient rock fortress known for its massive column of rock that reaches nearly 200 meters high.
- The King Kasyapa (477-495 AD), who chose this site as his new capital built an impressive palace right on top of the rock column, accessible only through the mouth of an enormous carved lion.



- A popular tourist destination Sigiriya is also renowned for its ancient paintings (frescos) which are reminiscent of the Ajantha caves of India. It is one of the seven world heritage sites of Sri Lanka. It is also declared by UNESCO as the 8th wonder of the world.



> SIGIRIYA VILLAGE TOUR + COOKING DEMONSTRATION

> CATAMARAN BOAT TOUR OF HIRIWADUNNA LAKE

- There after proceed to experience the Sigiriya village track and cooking demonstration. Beautiful catamaran ride and cross the lake to local village house. You can experience the traditional village life return to hotel .



- DINNER & OVER NIGHT AT THE SELECTED HOTEL

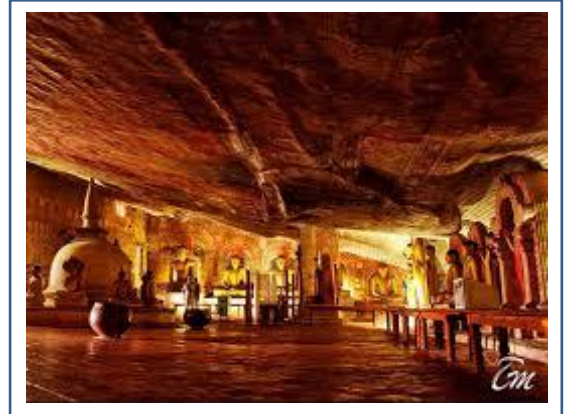
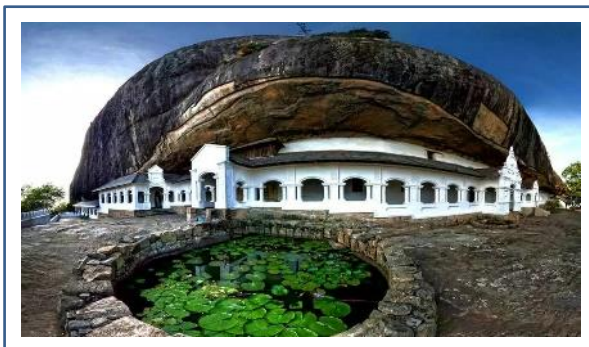
DAY 10:

KANDY

- > AFTER BREAKFAST CHECK OUT FROM THE HOTEL AND TRANSFER TO KANDY.
- > VISIT THE DAMBULLA CAVE TEMPLE & AYURVEDIC VILLAGE.

DAMBULLA CAVE TEMPLE

- Dambulla is the largest and best-preserved cave temple complex in Sri Lanka. The rock towers 160 m over the surrounding plains.
- there are more than 80 documented caves in the surrounding area. Major attractions are spread over five caves, which contain statues and paintings. These paintings and statues are related to Gautama Buddha and his life.



There are a total of 153 buddha statues, three statues of Sri Lankan kings and four statues of gods and goddesses. The latter include Vishnu and the Ganesha. The murals cover an area of 2,100 square meters (23,000 sq ft).

AYURVEDIC VILLEE

- spices have held a prominent position in Sri Lanka's cultural and economic spheres for centuries, revered for their versatility and myriad benefits.
- From enhancing culinary delights to serving as key components in traditional medicine, spices have played a pivotal role in shaping the island's identity and fostering cross-cultural exchanges.



DAY 11:

ELLA

- > BREAKFAST AT THE HOTEL EARLY MORNING
- > CHECK OUT FROM KANDY AND PROCEED TO ELLA VIA NUWARA ELIYA
- > VISIT TEA PLANTATION AND FACTORY.

- The year 2017 marked 150 years ago from the date that James Taylor began the first tea plantation of Sri Lanka in Loolecondera estate in Kandy.



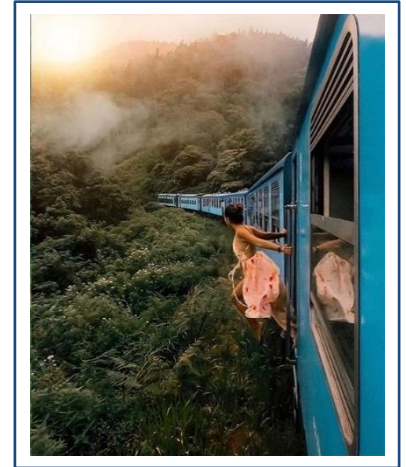
In this year, Ceylon tea was noted as one of the country's foremost export crops earning an annual revenue in excess of us \$1 billion, with the introduction of an abundance of highly innovative, value-added products over the past decade or so.

- Ceylon tea now enjoys an enviable international reputation. A product that began as a diversification experiment in 1867 spanning just 19 acres of land in Kandy had expanded its cultivation to six principal regions within the country.
- Sri Lanka is an island made for tea. Tea is produced throughout the year and the total tea production is around 340 million kg per year.
- Sri Lanka's tea growing areas are mainly concentrated in the central highlands and the southern interior of the island.



> **ENJOY A TRAIN RIDE FROM NANUOYA TO ELLA**

- Sri Lanka's most scenic train ride is one of the best in the world. Sri Lanka's Colombo to Badulla train ride deserves a place on your bucket list, and these three scenic stops along the route prove why. The train ride from Colombo to Badulla will awaken all your senses



- > YOUR GUIDE WILL PICK YOU UP FROM THE STATION THERE AFTER CONTINUE THE JOURNEY TO HOTEL.
- > CHECK IN THE HOTEL AND RELAX.
- > DINNER & OVER NIGHT STAY AT THE SELECTED HOTEL IN ELLA .

DAY 12:

ELLA

- > BREAKFAST AT THE HOTEL

LITTLE ADOM'S PEAK

- The Named after its resemblance to the iconic Adam's Peak/Sri Pada, Little Adam's Peak is its smaller brother and a must-visit when in Ella.
- The hike to the top of Little Adam's Peak is fairly easy; the peak is 1141m high, so it is more of a two-hour-long leisurely walk



NINE ARCH BRIDGE

- The bridge was designed to accommodate a challenging nine-degree curve and steep gradient.
- Built entirely by local labor under British supervision, the construction faced significant logistical challenges, including difficult terrain and material transport.
- Completed in 1919, the bridge has since stood resilient, showcasing innovative engineering solutions such as concrete cornice blocks for arch support and locally produced sand-cement blocks for facing.



> DINNER & OVER NIGHT STAY AT THE
SELECTED HOTEL IN ELLA .

DAY 13:

UDAWALAWA

> BREAKFAST AT THE HOTEL EARLY MORNING

BUDURUWAGALA TEMPLE

- Buduruvagala, apply named "The Rock of Buddhist Sculptures," stands as a timeless testament to Sri Lanka's rich cultural and religious heritage.



- At the heart of Buduruvagala lies its most striking feature: the towering standing Buddha statue, reaching an impressive 15 meters in height.
- Buduruvagala stands as a timeless sanctuary of spiritual devotion and artistic mastery. With its majestic Buddha figures, mysterious oil lamp, and rich tapestry of legends, Buduruvagala continues to captivate hearts and minds, ensuring its legacy endures for generations to come.



POTTERY DEMONSTRATION

- Pottery of Sri Lanka is one of the traditional small industries. The pottery industry is distributed almost throughout the country and it has a long history and a tradition.

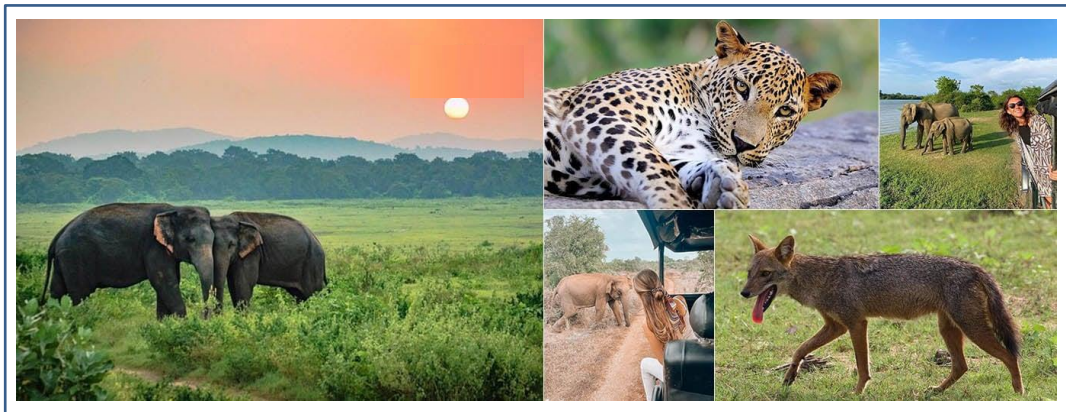


History:

- The pottery of Sri Lanka has a very long history. There are pieces of evidence about the history of pottery in Sri Lanka that goes back to the second century BC. It has become unbroken tradition that was passed from one generation to other.
- There is evidence from the archeological excavations at the Anuradhapura Gedige and Kandarodai in Jaffna that has found pottery items in the early stage of history in Sri Lanka.
- The archeological excavations done near the Thissamaharamaya found many pottery items dated back to second BC. Some of them were imported from various places in the world. That proves pottery items were one of the main good which was traded in international trading in ancient Sri Lanka

UDAWALAWA NATIONAL PARK (OPTIONAL)

- Udawalawe National Park is a national park on the boundary of Sabaragamuwa and Uva Provinces in Sri Lanka.
- The park was created to provide a sanctuary for wild animals displaced by the construction of the Udawalawe Reservoir on the Walawe River, as well as to protect the catchment of the reservoir.
- The reserve covers 30,821 hectares (119.00 sq mi) of land area and was established on 30 June 1972

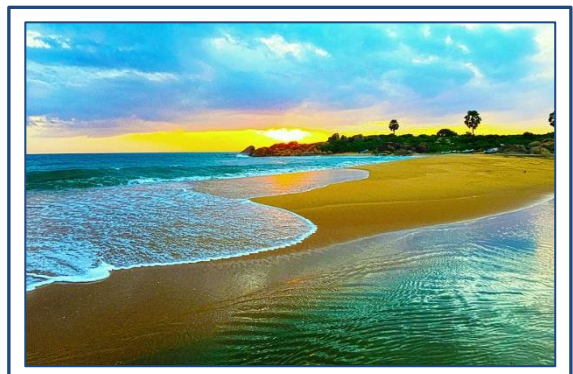


> DINNER AND OVERNIGHT STAY AT THE SELECTED HOTEL UDAWALAWA

DAY 14:

BEACH

- > BREAKFAST AT THE HOTEL EARLY MORNING
TANSER TO THE SOUTHERN BEACH AREA
- > VISIT ELEPHANT TRANSIT HOME
- > GALL DUTCH FORT AND CITY TOUR
- > OVERNIGHT STAY SELECTED HOTEL AT GALLE



ELEPHANT TRANSIT HOME

- The complex is a halfway house for orphaned elephants. After rehabilitation, the elephants are released back into the wild, many into Udawala National Park.
- Even if you don't get to get up close with the elephants, it's still fun to see them at feeding time from a viewing platform elephant Transit Home

(Open During in Feeding time 10.30am / 2.30pm / 6.00pm)



- Over 100 elephants have been rehabilitated at the Elephant Migratory Shelter and later released into the wild. There are usually about 40 young pachyderms here at any given time.
- Many tour operators include a visit to the Elephant Sanctuary in their tours. There are also good informational displays where you can learn about elephants and their ancestors.

END ROUTE VISIT GALL FORT

Old town of Galle and its fortifications :

- Founded in the 16th century by the Portuguese, Galle reached the height of its development in the 18th century, before the arrival of the British.



It is the best example of a fortified city built by Europeans in South and South-East Asia, showing the interaction between European architectural styles and South Asian traditions.

DAY 15:

BEACH

- > BREAKFAST AT THE HOTEL EARLY MORNING
- > MADU RIVER BOAT RIDE
- > VISIT KOSGODA SEA TURTLES CONSERVATION CENTER

MADU RIVER BOAT SAFARI

- Madu River is a complex coastal wetland ecosystem. Even though referred to as a river, it resembles more a lagoon or estuary in structure. Madu River which 770 Ha consist of open water while 145 Ha account for 64 small islands.
- Madu River complex is a very rich bio diversified hot spot and sensitive eco system with ecological significances which higher than any other coastal eco systems island wide.



- Total of 11 species of agnatic mollusks and 14 land dwelling mollusks are found in this system. 70 species of fish, 31 types of reptiles, and 50 kinds of butterflies are some of the colorful array of wildlife that inhabits this ecosystem.

SEA TURTLES CONSERVATION CENTER:

- Presently they are five species of Turtles that are taken care in the hatchery and rescue centre. Such species are the Olive Ridley turtles, Leatherback Turtles, Loggerheads Turtles, Hawksbill Turtles, and Green Turtles.
- The facilities of the sea turtle hatchery and rescue Centre are all state of the art, complete with water tanks to care new born Turtles along with adult Turtle species that have been rescued from the sea due to injuries.



- One of the more peculiar sights in the centre is the area in which the Turtles lay their eggs as they have distinct little mounds of sand piled neatly between one another. Each of these mounds is monitored closely to calculate the hatchery process of the turtle eggs.

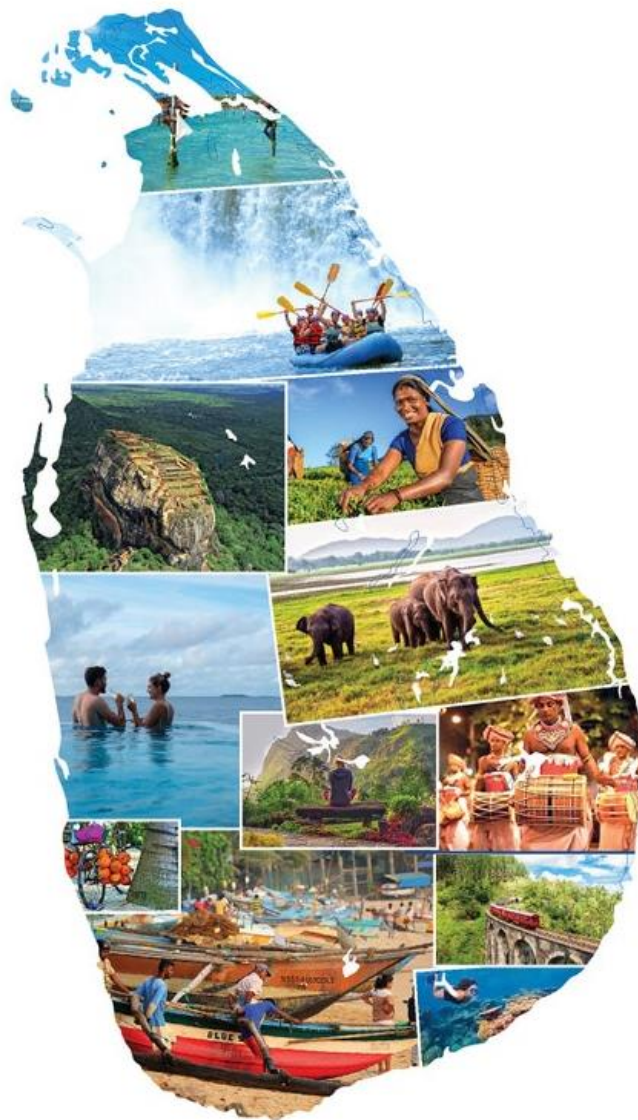
> DINNER AND OVERNIGHT STAY AT THE SELECTED BEACH HOTEL



DAY 16

DEPARTURE

- > CHECK OUT AND TRANSFER TO BANDARANAYAKE INTERNATIONAL AIRPORT
- > CATCH YOUR FLIGHT BACK HOME WITH ALL THE HAPPY MEMORIES OF THE BEAUTIFUL COUNTRY SRI LANKA
- > NOTE - TRAVEL ITINERARY WILL DEPEND ON YOUR FLIGHT ARRIVAL AND DEPARTURE TIME
- > LATE CHECK –OUT SUBJECTED ON AVAILABILITY



INCLUDED EXCURSIONS FOR THE TOUR

<ul style="list-style-type: none">• Wilpaththu National Park• Anuradapura City tour• Mihintale ancient city• Nagadeepa Temple• Jafna City tour• Trincomalee City tour• Wheels and dolphin watching• Snorkeling• Village tour and cooking• Dabulla cave Temple• Ayurweeda village• Train ride (nanuoya to Ella)	<ul style="list-style-type: none">• Tea plantation and factory• Little Adams peak• Nine Arch bridge• Rawana water fall• Budhuvagala Temple• Pottery demonstration• Elephant transit home• Gall fort city tour• Madu rivers Safari• Sea turtles
---	---

OPTIONAL:

Elephant jeep safari Udawalawa national park.

Sigiriya

