



## ISLAND CHARM ON A BUDGET

### Bespoke Budget Tour For 14 Days, 13 Nights



At **Azure Island Tours**, we're dedicated to creating exceptional travel experiences that cater to your individual needs. Our team of travel experts takes the time to understand your preferences, ensuring every trip is unique, personalized, and hassle-free. Whether you're after adventure, relaxation, or cultural immersion, we design every detail with you in

  
**BOOK NOW**

## **DAY 01:**

### **ARRIVAL IN COLOMBO | TRANSFER TO KANDY**



> **TIME & ROUTE:** COLOMBO AIRPORT → PINNAWALA (APPROX. 2 HOURS) → KANDY (APPROX. 2 HOURS)

> **ACTIVITIES:**

- VISIT PINNAWALA ELEPHANT ORPHANAGE
- KANDY UPPER LAKE DRIVE AND VIEWPOINT
- KANDYAN CULTURAL DANCE SHOW

> **OVERNIGHT STAY:** OAK RAY SERENE GARDEN, KANDY

> **TOUR HIGHLIGHTS:** CULTURAL IMMERSION, SCENIC LAKE VIEWS, AND TRADITIONAL DANCE PERFORMANCES.

### **PINNAWALA ELEPHANT ORPHANAGE**



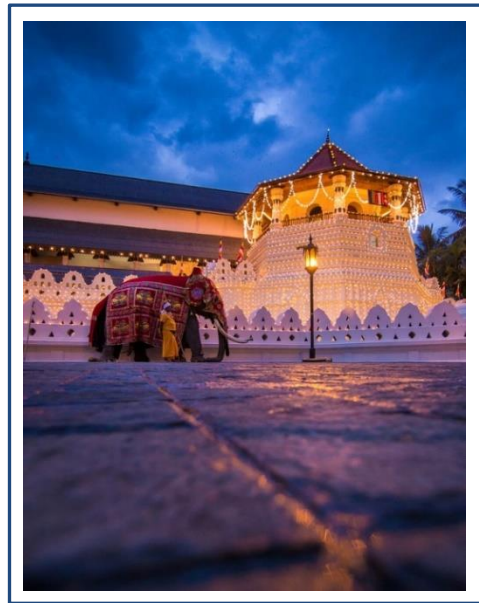
- The Pinnawala Elephant Orphanage is a renowned wildlife sanctuary located in Sri Lanka, dedicated to the care and rehabilitation of orphaned or injured elephants. Visitors can witness these majestic animals up close as they bathe in the river, play, and interact with caretakers.

- The orphanage provides a safe environment for the elephants and focuses on their preservation. It's a popular stop for animal lovers and those seeking a unique cultural experience. With a chance to feed and even interact with the elephants, it offers a heartwarming and unforgettable experience for all ages.

## DAY 02 :

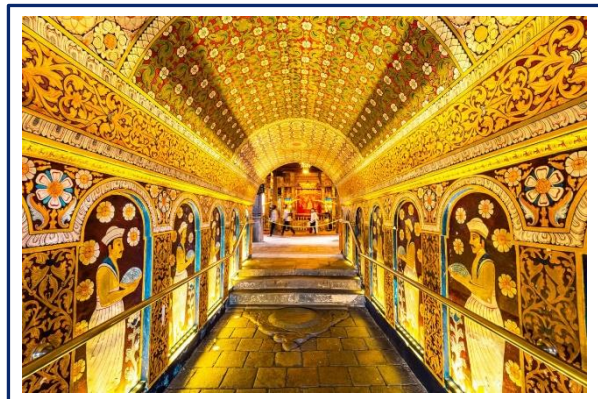
### KANDY SIGHTSEEING TOUR

- > **TIME & ROUTE:** WITHIN KANDY
- > **ACTIVITIES:**
  - VISIT TEMPLE OF THE SACRED TOOTH RELIC
  - EXPLORE KANDY CITY CENTER
  - SUNSET AT PIDURANGALA WITH VIEWS OF SIGIRIYA
- > **OVERNIGHT STAY:** OAK RAY ELEPHANT LAKE
- > **TOUR HIGHLIGHTS:** SACRED BUDDHIST SITES, URBAN EXPLORATION, AND STUNNING VIEWS..



### THE TEMPLE OF TOOTH

- Temple of the sacred tooth relic, is a buddhist temple in kandy, sri lanka. It is located in the royal palace complex of the former kingdom of kandy, which houses the relic of the tooth of the buddha.
- The daily rituals performed for the sacred tooth relic is called “theva” or services, and there are three services. Early morning service, mid-day service and the evening service. It also includes traditional sound offerings





## PIDURANGALA ROCK



- Located near Sigiriya in Sri Lanka. Known for its breathtaking panoramic views, it offers a less crowded alternative to the famous Sigiriya Rock Fortress.
- Visitors can hike to the top, where they'll be rewarded with sweeping vistas of the surrounding jungle, lakes, and the iconic Sigiriya Rock. The climb is relatively moderate and takes you past ancient ruins and a reclining Buddha statue. Pidurangala is a must-visit for those seeking a peaceful, scenic experience combined with a bit of history and adventure.

## DAY 03:

### DAY TRIP TO SIGIRIYA



- > **TIME & ROUTE:** KANDY → SIGIRIYA (APPROX. 2.5 HOURS EACH WAY)
- > **ACTIVITIES:**
  - CLIMB SIGIRIYA ROCK FORTRESS (UNESCO WORLD HERITAGE SITE)
  - SIGIRIYA ANCIENT VILLAGE TOUR (BULLOCK RIDES, BOAT TRIPS, AND LOCAL MEALS)
  - AYURVEDA ISIWARA PAURA SPA TREATMENTS

- > **OVERNIGHT STAY:** OAK RAY ELEPHANT LAKE
- > **TOUR HIGHLIGHTS:** HISTORIC EXPLORATION, CULTURAL VILLAGE LIFE, AND RELAXING SPA EXPERIENCES.

### **SIGIRIYA LION ROCK**

- Sigiriya Lion Rock is an ancient rock fortress known for its massive column of rock that reaches nearly 200 meters high.
- The King Kasyapa (477-495 AD), who chose this site as his new capital built an impressive palace right on top of the rock column, accessible only through the mouth of an enormous carved lion.



- A popular tourist destination Sigiriya is also renowned for its ancient paintings (frescos) which are reminiscent of the Ajantha caves of India. It is one of the seven world heritage sites of Sri Lanka. It is also declared by UNESCO as the 8th wonder of the world.

### **SIGIRIYA VILLAGE TOUR**



- Step back in time with the Sigiriya Ancient Village Tour, where tradition comes to life. Experience the charm of rural Sri Lanka with a serene bullock ride, a tranquil boat journey, and a tuk-tuk or tractor adventure through lush fields. Savor authentic local flavors with a traditional complimentary meal and witness the delicate art of making sweet delicacies like kavum and kokis. This immersive journey offers a rare glimpse into the heart of Sri Lankan village life.

## AYURVEDA ISIWARA PAURA



- Indulge in the rejuvenating Full Body Ayurvedic Massage with Steam Bath at Ayurveda Isiwara Paura, where ancient healing traditions come alive. This soothing experience begins with a full-body massage using herbal oils designed to balance mind, body, and spirit. As tension melts away,
- The steam bath infused with medicinal herbs opens pores, detoxifying and revitalizing your skin. Tailored to your needs, this holistic therapy restores energy, promotes relaxation, and leaves you feeling renewed. It's an essential Ayurvedic treatment offering a blend of relaxation and rejuvenation

## DAY 04:

### POLONNARUWA AND MINNERIYA/ KAWUDULLA SAFARI

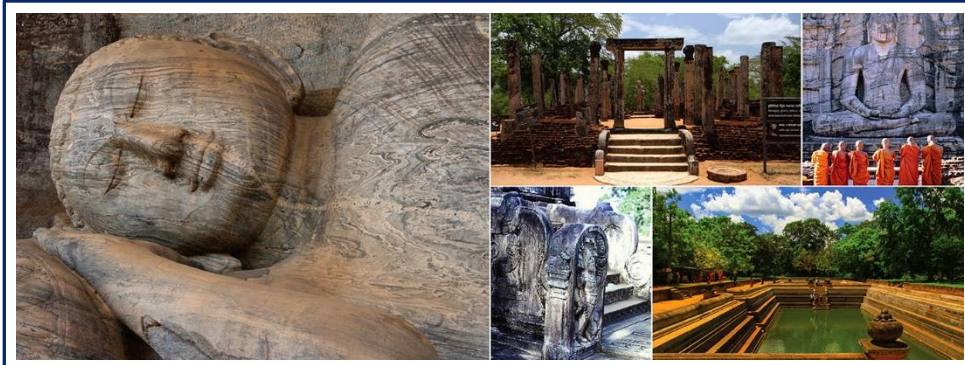


- > **TIME & ROUTE:** SIGIRIYA → POLONNARUWA (APPROX. 1.5 HOURS) → KAWUDULLA/MINNERIYA NATIONAL PARK (APPROX. 1 HOUR) → SIGIRIYA
- > **ACTIVITIES :**
  - VISIT DAMBULLA CAVE TEMPLE(GOLDEN TEMPLE)
  - WILDLIFE SAFARI AT KAWUDULLA/MINNERIYA NATIONAL PARK
- > **OVERNIGHT STAY:** OAK RAY ELEPHANT LAKE
- > **TOUR HIGHLIGHTS:** ANCIENT RUINS AND EXCITING WILDLIFE ENCOUNTERS.



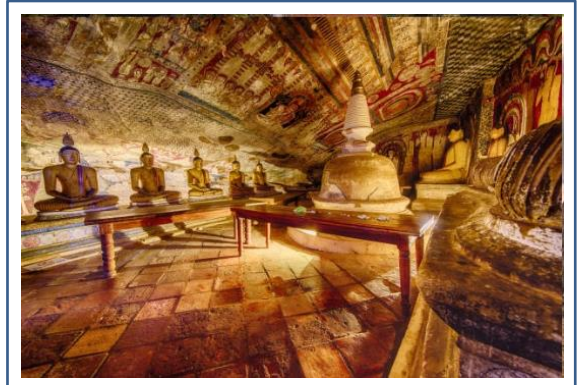
## POLONNARUWA

- Polonnaruwa Was the second capital of Sri Lanka. After the destruction of Anuradhapura in 993. It comprises besides the Brahmanic monuments build by Cholas, the monuments ruins of the fabulous garden city created by Parakramabahu I in the 12th century.



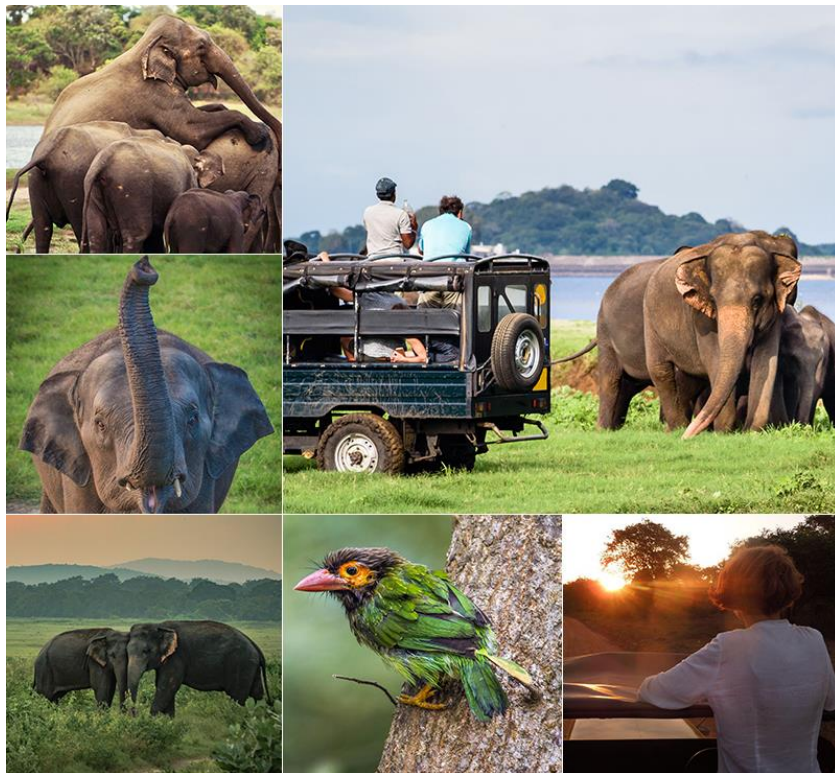
## DAMBULLA CAVE TEMPLE

- Dambulla is the largest and best-preserved cave temple complex in Sri Lanka. The rock towers 160 m over the surrounding plains.
- There are more than 80 documented caves in the surrounding area. Major attractions are spread over five caves, which contain statues and paintings. These paintings and statues are related to Gautama Buddha and his life.



- This UNESCO World Heritage site features a series of five ancient caves adorned with intricate murals and over 150 stunning Buddha statues, each carved with exceptional artistry.
- Three statues of Sri Lankan kings and four statues of gods and goddesses. The latter include Vishnu and the Ganesha. The murals cover an area of 2,100 square meters (23,000 sq ft).
- As you explore the temples, you'll be surrounded by serene views of lush landscapes and historic relics. The peaceful atmosphere invites you to reflect on the devotion and craftsmanship of Sri Lanka's ancient Buddhist culture.

## MINNERIYA/ KAVUDULLA JEEP SAFARI



- Minneriya and Kaudulla, famous for their large gatherings of elephants, especially during the iconic "Elephant Gathering."

- Visitors can embark on jeep safaris to explore the lush landscapes teeming with diverse wildlife, including leopards, sloth bears, deer, and a variety of bird species.

- Habarana's safaris provide an excellent opportunity to witness Sri Lanka's rich biodiversity while immersing in the serenity of its natural beauty, making it a highlight for eco-tourism and adventure seekers.

## DAY 05:

### ANURADHAPURA SPIRITUAL TOUR

- > **TIME & ROUTE:** SIGIRIYA → ANURADHAPURA (APPROX. 1.5 HOURS) → TRINCOMALEE (APPROX. 2 HOURS)
- > **ACTIVITIES:**
  - VISIT ISURUMUNIYA TEMPLE
  - JAYA SRI MAHA BODHI
  - RUWANWELI MAHA SEYA
  - JETAVANARAMAYA
- > AFTER THE SITESEEING TRANSFER TO THE TRINCOMALEE
- > **OVERNIGHT STAY:** NILAVELI BEACH HOTEL



- > **TOUR HIGHLIGHTS:** SPIRITUAL EXPLORATION OF SACRED BUDDHIST SITES AND HISTORICAL WONDERS.

### SACRED CITY ANURADHAPURA

- Anuradhapura, a Ceylonese political and religious capital that flourished for 1,300 years, Hidden away in dense jungle for many years, the splendid site, with its palaces, monasteries and monuments, is now accessible once again.
- The glories of that age can be found in the archaeological treasures that still give a pretty good idea of how the city looked in its heyday.

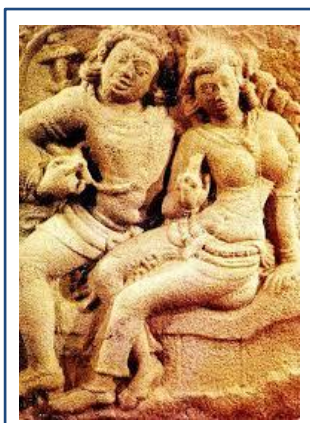


### SRI MAHABODHI

- This is believed to be a tree grown from a cutting of the southern branch from the historical sacred bo tree, Sri Maha Bodhi, which was destroyed during the time of Emperor Ashoka the Great, at Buddha Gaya in India, under which Siddhartha Gautama (Buddha) attained Enlightenment.



### ISURUMUNIYA TEMPLE



Isurumuniya is a Buddhist temple has been built by King Devanam Piyatissa between 250 – 210 BC.

- There are four carvings of special interest in this Vihara. They are the Isurumuniya Lovers, Elephant Pond and The Royal Family.

## RUWAN WELI MAHA SEYA STUPA

- Ruwanweli Maha Seya holds profound culture constructed by King Dutugemunu in the 2nd century BCE.
- The stupa serves as a symbol of peace and enlightenment, embodying the core principles of Buddhism. Its enduring presence stands testament to Sri Lanka's rich history and its commitment to preserving Buddhist traditions.



## JETAWANARAMAYA

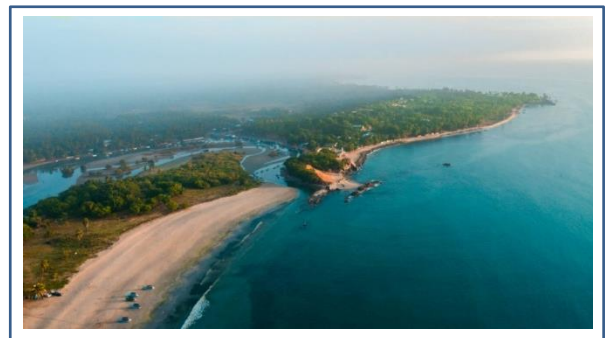
- Jetavanaramaya is one of the largest and ancient stupas in Sri Lanka. Known for its towering structure and rich history, it stands as a testament to ancient Buddhist architecture and engineering. Surrounded by peaceful grounds, this sacred site offers a deep connection to Sri Lanka's Buddhist heritage, making it a must-visit for history enthusiasts and spiritual seekers.



## DAY 06:

### TRINCOMALEE SIGHTSEEING TOUR

- > **TIME & ROUTE:** WITHIN TRINCOMALEE
- > **ACTIVITIES:**
  - VISIT THIRUKONESWARAM KOVIL
  - RELAX AT MARBLE BEACH AND UPPUVELI BEACH
- > **OVERNIGHT STAY:** NILAVELI BEACH HOTEL
- > **TOUR HIGHLIGHTS:** COASTAL SERENITY AND HINDU CULTURAL EXPERIENCES.





### THIRUKONESWARAM KOVIL

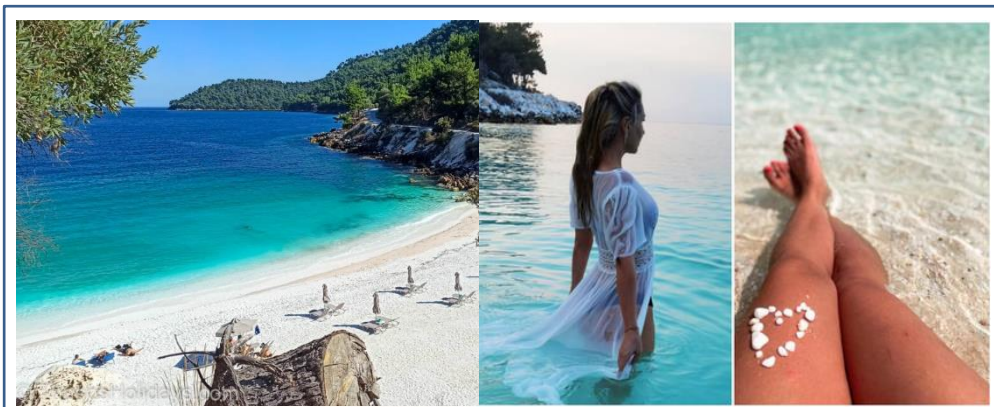
- Thirukoneswaram Kovil, located in Trincomalee, Sri Lanka, is an ancient Hindu temple dedicated to Lord Shiva. Perched on Swami Rock, overlooking the Indian Ocean, the temple is renowned for its stunning location and spiritual significance.



- With a history spanning over two millennia, it is a testament to the island's rich Hindu heritage.
- The temple is known for its intricate Dravidian architecture, vibrant festivals, and the annual Koneswaram Ther Thiruvilla (Chariot Festival)

### MARBLE BEACH

- Marble Beach, nestled along Trincomalee's coastline, is a serene haven with crystal-clear waters and soft, white sand. Its calm waves make it ideal for swimming and relaxation, while the surrounding natural beauty offers a tranquil escape. Perfect for a peaceful day by the sea, Marble Beach is a hidden treasure for those seeking quiet and scenic coastal charm.





## UPPUVELI BEACH

- Uppuveli Beach, located near Trincomalee, is a tropical paradise known for its golden sands and calm, turquoise waters. Ideal for swimming, sunbathing, or simply unwinding, it offers a tranquil coastal escape. With its relaxed vibe and scenic beauty, Uppuveli Beach is perfect for those looking to experience Sri Lanka's laid-back beach culture.

## DAY 07:

## UNDERWATER ADVENTURE



- > **TIME & ROUTE:** TRINCOMALEE → PIGEON ISLAND (20 MINUTES BY BOAT)
- > **ACTIVITIES:**
  - SNORKELING AT PIGEON ISLAND NATIONAL PARK
  - RELAX AT NILAVELI BEACH
- > **OVERNIGHT STAY:** TRINCO BLU BY CINNAMON
- > **TOUR HIGHLIGHTS:** MARINE EXPLORATION AND BEACHFRONT RELAXATION.

## PIGEON ISLAND NATIONAL PARK

Pigeon Island National Park, off the coast of Nilaveli, is a marine paradise teeming with vibrant coral reefs and diverse sea life. Perfect for snorkeling and diving.



- It offers close encounters with reef sharks, colorful fish, and breathtaking underwater scenery. Surrounded by pristine beaches, this protected sanctuary is a must-visit for nature enthusiasts and adventure seekers alike.
- Pigeon Island Snorkeling offers an unforgettable underwater adventure amidst vibrant coral reefs and abundant marine life. Swim alongside colorful fish and graceful reef sharks in crystal-clear waters, exploring one of Sri Lanka's most stunning marine sanctuaries. Perfect for nature lovers and thrill seekers, this experience promises breathtaking encounters in a protected paradise

## DAY 08:

### ARUGAMBAY SIGHTSEEING TOUR



- > **TIME & ROUTE:** TRINCOMALEE → PASIKUDAH (APPROX. 3 HOURS) → ARUGAMBAY (APPROX. 3 HOURS)
- > **ACTIVITIES:**
  - VISIT PASIKUDAH AND KALKUDAH BEACHES
  - SAFARI AT POTTUVIL LAGOON
  - EXPLORE BATTICALOA FORT AND KUMANA NATIONAL PARK
- > **OVERNIGHT STAY:** AMAYA RESORT & SPA, PASIKUDAH
- > **TOUR HIGHLIGHTS:** COASTAL ESCAPES, WILDLIFE SAFARIS, AND HISTORICAL LANDMARKS.

#### PASIKUDAH AND KALKUDAH BEACH

Pasikudah and Kalkudah Beach, located on Sri Lanka's eastern coast, are renowned for their calm, shallow waters and pristine sandy shores. Ideal for swimming and water sports, these beaches offer a serene and picturesque escape. With their tranquil atmosphere and stunning views, Pasikudah and Kalkudah are perfect for a relaxing coastal retreat.

#### SAFARI AT POTTUVIL LAGOON



- A safari at **Pottuvil Lagoon**, located near the popular surf town of Arugam Bay, offers a tranquil and unique wildlife experience. Tourists can enjoy a boat ride through the mangrove-lined lagoon.
- Where they can observe an array of bird species, including kingfishers, herons, and eagles, as well as crocodiles, monitor lizards, and even elephants along the banks. The serene environment and diverse ecosystems make it a perfect destination for nature enthusiasts and bird watchers.



## KUMANA NATIONAL PARK

- Located in the southeastern corner of Sri Lanka, **Kumana National Park** is a paradise for wildlife lovers and bird watchers.
- Known for its rich biodiversity, the park is home to elephants, leopards, deer, and water buffalo, as well as over 200 species of birds, including migratory ones.



less crowded and pristine environment compared to other parks in Sri Lanka.

## DAY 09:

### TRAIN RIDE ADVENTURE



- > **TIME & ROUTE:** ARUGAMBAY → ELLA VIA TRAIN (APPROX. 4 HOURS)
- > **ACTIVITIES:**
  - ENJOY THE SCENIC CALIPSO TRAIN RIDE THROUGH SRI LANKA’S HIGHLANDS
  - RELAX AT CHILL CAFE ELLA
- > **OVERNIGHT STAY:** LUXOR KIRINDI ELLA
- > **TOUR HIGHLIGHTS:** SPECTACULAR LANDSCAPES AND RELAXING HIGHLAND AMBIANCE.

### CALIPSO TRAIN RIDE

- The Calypso Train Ride to Ella is a breathtaking journey through Sri Lanka’s lush hill country, often considered one of the most scenic train rides in the world. Starting from cities like Kandy, Nuwara Eliya, or Haputale, the train travels through rolling tea plantations, misty mountains, cascading waterfalls, and quaint rural villages.



- Passengers can enjoy the slow pace of the train, with open windows and doors offering spectacular views and the opportunity to take unforgettable photos. Ella, the endpoint for many travelers, is a charming hill town known for its relaxed vibe, stunning hiking trails, and landmarks.

### CHILL CAFE

- Chill Cafe, ranked among the world’s top spots in 2024, is the ultimate haven for relaxation and indulgence. Nestled in a picturesque location, the café exudes a laid-back vibe, with cozy seating, vibrant decor, and locally-inspired dishes and refreshing drinks.
- It’s a perfect blend of great food, friendly service, and a welcoming ambiance, making it a must-visit for travelers seeking a taste of the good life to its world-renowned status.



## **DAY 10:**

### **ELLA SIGHTSEEING TOUR**

> **TIME & ROUTE:** WITHIN ELLA

> **ACTIVITIES:**

- HIKE LITTLE ADAM'S PEAK
- VISIT NINE ARCH BRIDGE
- PALLEWELA ELLA WATERFALL
- OPTIONAL: NIL DIYA POKUNA (UNDERGROUND CAVE POOL)



> **OVERNIGHT STAY:** LUXOR KIRINDI ELLA

> **TOUR HIGHLIGHTS:** NATURE HIKES, ICONIC LANDMARKS, AND SERENE WATERFALLS.

> VISIT TEA PLANTATION AND FACTORY.

#### **LITTLE ADOM'S PEAK**

- The Named after its resemblance to the iconic Adam's Peak/Sri Pada, Little Adam's Peak is its smaller brother and a must-visit when in Ella.
- The hike to the top of Little Adam's Peak is fairly easy; the peak is 1141m high, so it is more of a two-hour-long leisurely walk



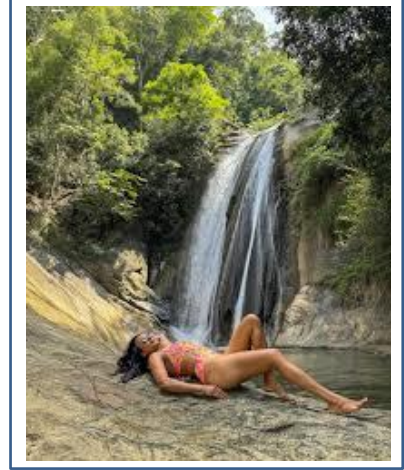
#### **NIL DIYA POKUNA (OPTIONAL)**

- Pallewela Ella Nil Diya Pokuna is a hidden underground pool, nestled deep within a network of ancient caves. Its crystal-clear waters reflect the surrounding rock formations, creating an ethereal and tranquil atmosphere.



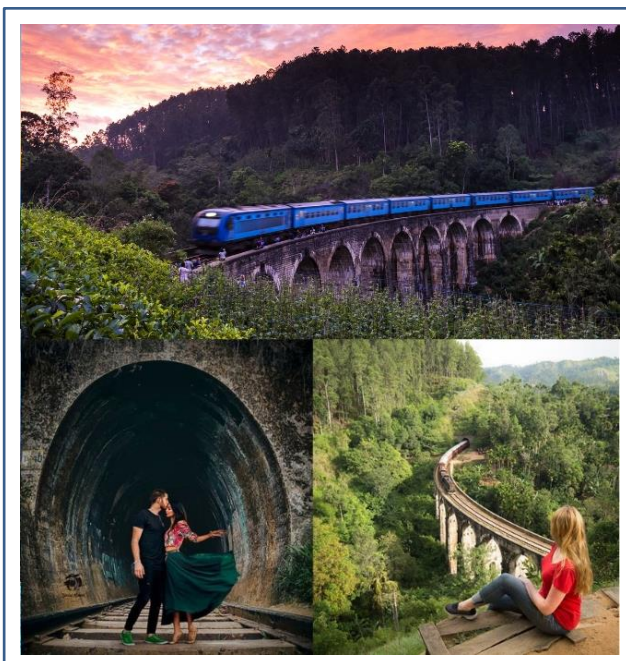
## **PALLEWELA ELLA**

- Pallewela ella waterfall Surrounded by lush greenery, the waterfall cascades gracefully over rocky terrain, creating a serene atmosphere perfect for relaxation and nature photography.
- Its relatively remote location ensures a tranquil experience, away from the crowds often found at more popular waterfalls.
- Visitors can enjoy a refreshing dip in its natural pool, explore the surrounding forest, or simply bask in the unspoiled beauty of the area. Pallewela Ella is ideal for those looking to discover a hidden gem in Sri Lanka's countryside.



## **NINE ARCH BRIDGE**

- The bridge was designed to accommodate a challenging nine-degree curve and steep gradient.



- Built entirely by local labor under British supervision, the construction faced significant logistical challenges, including difficult terrain and material transport.
- Completed in 1919, the bridge has since stood resilient, showcasing innovative engineering solutions such as concrete cornice blocks for arch support and locally produced sand-cement blocks for facing.

## **DAY 11:**

### **SOUTHERN COAST - TURTLES, WAVES, AND SUNSET ESCAPES**



> **TIME & ROUTE:** ELLA → KOSGODA (APPROX. 5 HOURS)

> **ACTIVITIES:**

- VISIT SEA TURTLE HATCHERY
- UNWIND AT SEBU LOUNGE
- EXPLORE MADU RIVER VIA BOAT SAFARI

> **OVERNIGHT STAY:** JETWING HERITAGE HOUSE

> **TOUR HIGHLIGHTS:** WILDLIFE CONSERVATION AND COASTAL RELAXATION.

#### **MADU RIVER BOAT SAFARI**

Madu River is a complex coastal wetland ecosystem. Even though referred to as a river, it resembles more a lagoon or estuary in structure. Madu River which 770 Ha consist of open water while 145 Ha account for 64 small islands.



- Madu River complex is a very rich bio diversified hot spot and sensitive eco system with ecological significances which higher than any other coastal eco systems island wide.



- Total of 11 species of agnatic mollusks and 14 land dwelling mollusks are found in this system. 70 species of fish, 31 types of reptiles, and 50 kinds of butterflies are some of the colorful array of wildlife that inhabits this ecosystem.

#### SEA TURTLES CONSERVATION CENTER:

- Presently they are five species of Turtles that are taken care in the hatchery and rescue centre. Such species are the Olive Ridley turtles, Leatherback Turtles, Loggerheads Turtles, Hawksbill Turtles, and Green Turtles.



- The facilities of the sea turtle hatchery and rescue Centre are all state of the art, complete with water tanks to care new born Turtles along with adult Turtle species that have been rescued from the sea due to injuries.



- One of the more peculiar sights in the centre is the area in which the Turtles lay there eggs as they have distinct little mounds of sand piled neatly between one another. Each of these mounds is monitored closely to calculate the hatchery process of The turtle eggs.



## DAY 12:

### SEASIDE HERITAGE: GALLE EXPERIENCE



- > **TIME & ROUTE:** KOSGODA → GALLE (APPROX. 1.5 HOURS)
- > **ACTIVITIES:**
  - VISIT COCONUT TREE HILLS
  - SURF AT DEWATA BEACH
  - EXPLORE GALLE FORT

- > **OVERNIGHT STAY:** JETWING HERITAGE HOUSE
- > **TOUR HIGHLIGHTS:** SURFING, COLONIAL ARCHITECTURE, AND OCEANFRONT EXPLORATION.

### OLD TOWN OF GALLE AND ITS FORTIFICATIONS

- Founded in the 16th century by the Portuguese, Galle reached the height of its development in the 18th century, before the arrival of the British.



It is the best example of a fortified city built by Europeans in South and South-East Asia, showing the interaction between European architectural styles and South Asian traditions.

### COCONUT TREE HILL

- **Coconut Tree Hill** is a stunning and iconic cliff located in **Mirissa**, Sri Lanka. Known for its breathtaking views, it features a picturesque grove of tall coconut trees perched atop a hill overlooking the turquoise waters of the Indian Ocean.
- This spot is particularly famous for its Instagram-worthy vistas and is a favorite among photographers and travelers seeking serene landscapes.
- Visitors can enjoy a peaceful walk under the swaying coconut palms, admire the sunrise or sunset, and take in the panoramic views of the coastline. Coconut Tree Hill offers a tranquil escape and is a must-visit for those exploring Sri Lanka's southern coastal charm.





## SURF AT DEWATA BEACH

- **Dewata Beach** is a popular destination for surfing enthusiasts, especially beginners. Known for its consistent and manageable waves, it provides the perfect conditions for learning and practicing the sport. It is a relaxing spot to enjoy the coastal vibes, soak up the sun, and admire the picturesque views



## DAY 13:

## COLOMBO CITY SIGHTS & SHOPPING



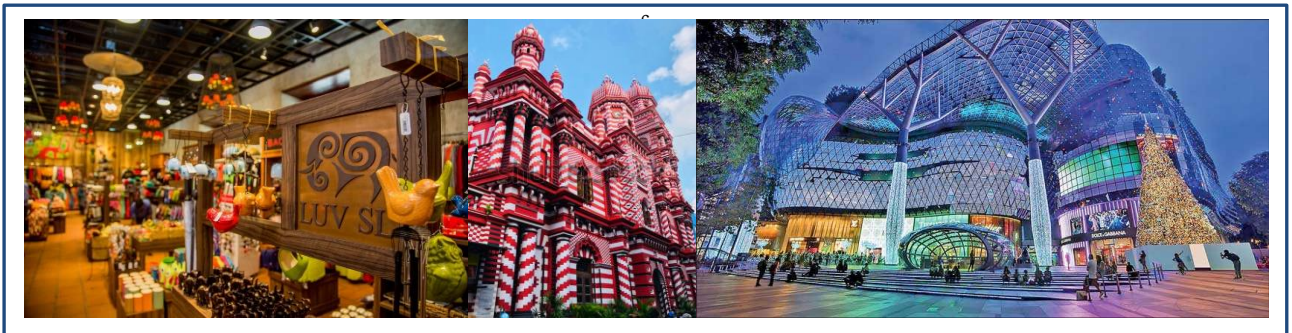
- > **TIME & ROUTE:** GALLE → COLOMBO (APPROX. 2.5 HOURS)
- > **ACTIVITIES:**
  - VISIT GANGARAMAYA TEMPLE
  - SHOP IN COLOMBO'S VIBRANT MARKETS AND UPSCALE MALLS
  - ENJOY THE VIEWS FROM MARINO BEACH COLOMBO
- > **OVERNIGHT STAY:** CINNAMON RED COLOMBO



- > **TOUR HIGHLIGHTS:** CULTURAL EXPLORATION AND URBAN SHOPPING EXPERIENCES.

### COLOMBO CITY TOUR WITH SHOPPING EXPERIENCE

- Dive into a vibrant shopping experience at Colombo's premier malls, where you'll find a mix of international brands, local boutiques, and unique gems. Browse through a variety of fashion, accessories, and electronics, ensuring you find the perfect holiday gifts and souvenirs. Enjoy the modern amenities and diverse dining options available, making it a fun-filled outing for everyone



- Colombo, Sri Lanka's vibrant capital, offers a rich blend of culture, architecture, and history. It is a bustling city where modernity meets tradition.
- From the striking Lotus Tower, The lively markets of Pettah, serene parks, and the picturesque Galle Face Green, where you can watch the sunset over the Indian Ocean, make Colombo a dynamic and unforgettable destination.

### LOTUS TOWER

- The Lotus Tower rises majestically above Colombo, a symbol of modern Sri Lanka's bold spirit and ambition. Its striking design mirrors the beauty of a lotus in bloom, while offering panoramic views that take your breath away.



- As you ascend, you'll feel a surge of awe and wonder, standing at the pinnacle of the city, where innovation meets natural beauty in perfect harmony.

#### **PETTAH FLOATING MARKET**

- The Pettah Floating Market is a vibrant blend of culture and commerce, where colorful stalls line the waters, offering everything from local crafts to fresh produce.
- As you wander through, the lively atmosphere and shimmering reflections create a sensory experience like no other, capturing the essence of Colombo's bustling spirit.



#### **GANGARAMAYA TEMPLE**

- Gangaramaya Temple is a sanctuary of peace and spirituality, where ancient traditions and vibrant culture come together in perfect harmony.
- As you wander through its sacred halls, the air feels alive with devotion, and the serene waters of the nearby Beira Lake evoke a deep sense of inner calm. It's a place where your spirit is uplifted, and the essence of Sri Lanka's rich spiritual heritage surrounds you.



## DAY 14

## DEPARTURE

- > **TIME & ROUTE:** COLOMBO → COLOMBO AIRPORT (APPROX. 1 HOUR)
- > **ACTIVITIES:**
  - FINAL REFLECTIONS ON THE TRIP AND TRANSFER TO THE AIRPORT
- > **TOUR HIGHLIGHTS:** END OF THE SRI LANKAN JOURNEY.





## TOUR HIGHLIGHTS

**Day 1:** Arrival in Colombo, visit Pinnawala Elephant Orphanage, Upper Lake Drive in Kandy, Kandyan Dance Show.

**Day 2:** Explore Temple of the Sacred Tooth Relic, Kandy city center, and sunset at Pidurangala.

**Day 3:** Climb Sigiriya Rock Fortress, village tour with traditional meals, Ayurveda isiwara paura.

**Day 4:** Discover Dambulla cave temple, Kaudulla/Minneriya wild safari.

**Day 5:** Visit Anuradhapura's sacred sites: Jaya Sri Maha Bodhi, Ruwanweli Maha Seya, isurumuniya temple, Jetawanaramaya..

**Day 6:** Relax at Trincomalee's Marble Beach, uppuveli beach and visit Thirukoneswaram Kovil.

**Day 7:** Snorkeling at Pigeon Island, Nilaveli Beach relaxation.

**Day 8:** Explore Arugambay beaches and Batticaloa fort, enjoy pottuvil lagoon safari, Kumana National Park safari.

**Day 9:** Scenic calipso train ride to Ella, explore Chill Cafe.

**Day 10:** Hike Little Adam's Peak, visit Nine Arch Bridge, Pallewela Ella, (optional) Nil Diya Pokuna.

**Day 11:** Visit Kosgoda Sea Turtle Hatchery, Sebu Lounge, Enjoy Madu River Boat Safari.

**Day 12:** Explore Galle Fort, Coconut Tree Hills, and Deawata Beach Surf.

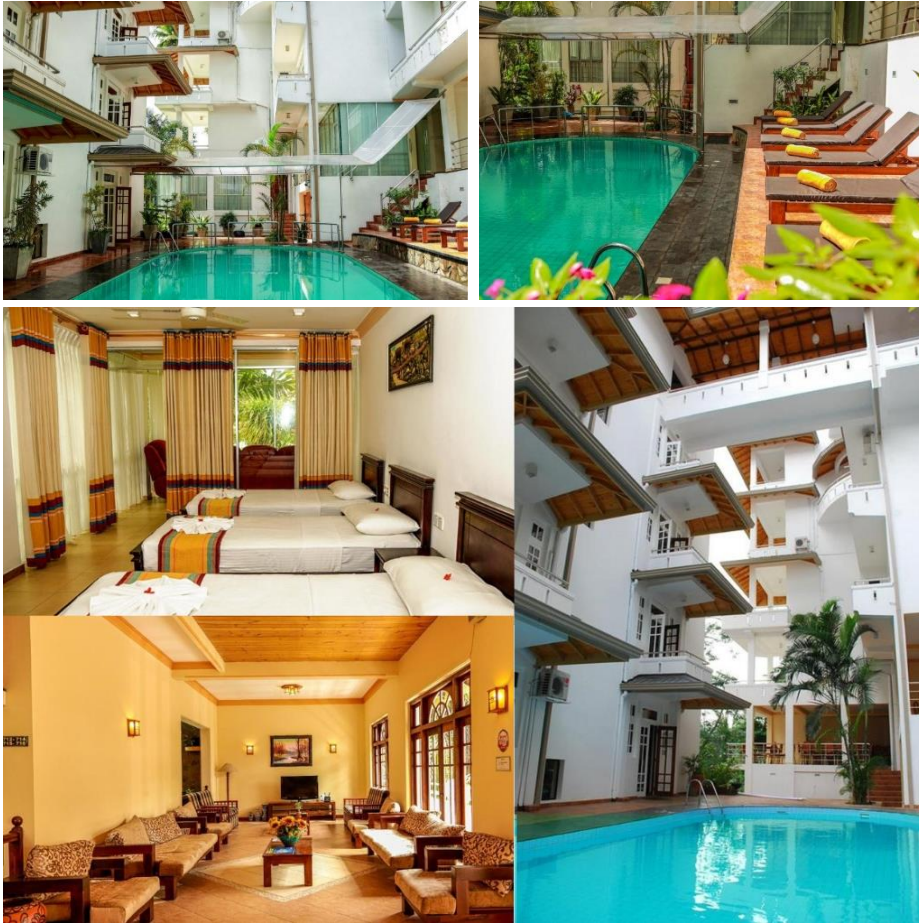
**Day 13:** Colombo city tour: Gangaramaya Temple, Pettah Market, Lotus Tower, Colombo city tour with shopping experiment.

**Day 14:** Departure from Colombo.

## HOTEL DETAILS

### Day 1: Kandy – Oak Ray Serene Garden

Oak Ray Serene Garden offers a serene escape in Kandy with its prime location near Kandy Lake. The hotel ensures a comfortable stay with modern amenities and proximity to key attractions.



**Star Rating:** 4 Star

#### **Amenities:**

- Outdoor swimming pool
- On-site restaurant serving local and international cuisine
- Bar & lounge
- Free Wi-Fi in public areas
- Private balconies with scenic views
- Air-conditioned rooms with modern amenities
- 24-hour front desk and concierge services

### Day 2,3,4: Sigiriya – Oak Ray Elephant Lake

Located near Sigiriya Rock Fortress, Oak Ray Elephant Lake blends tranquility with accessibility. It's surrounded by lush greenery and offers facilities ideal for relaxation after exploring cultural landmarks.



**Star Rating:** 4 Star

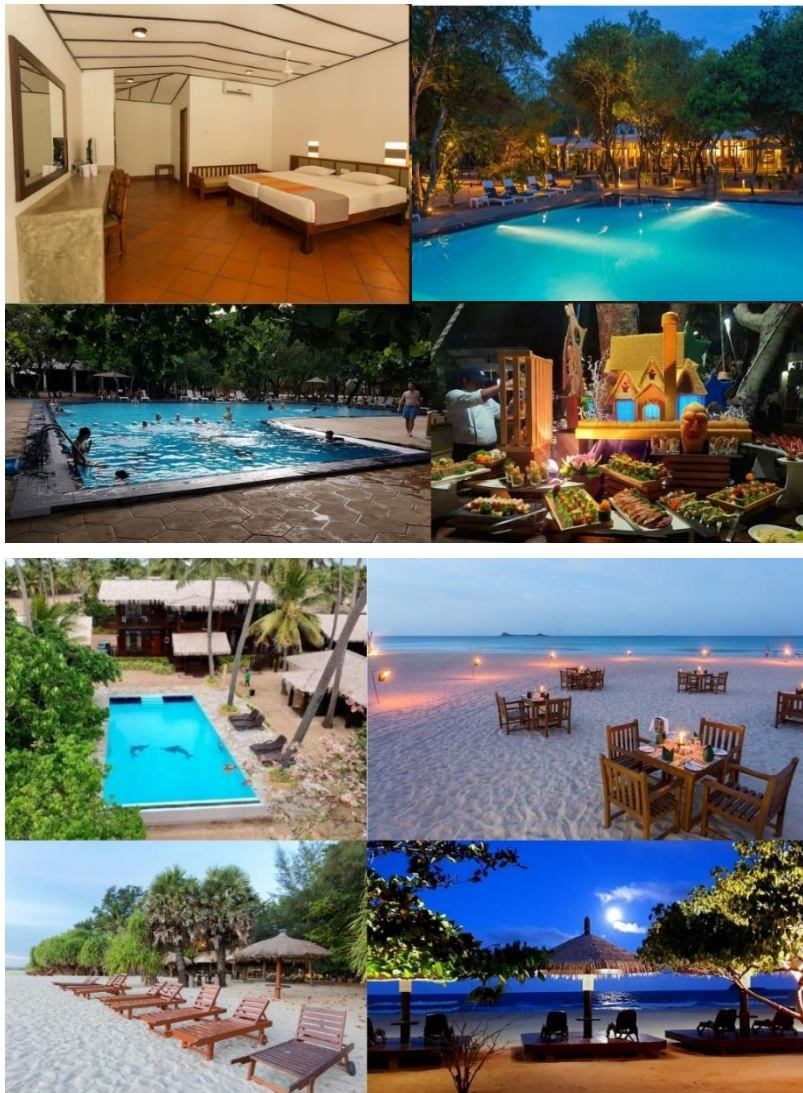
#### **Amenities:**

- Outdoor swimming pool with a sundeck
- Spacious gardens for leisure walks
- On-site restaurant with buffet options
- Free Wi-Fi in common areas
- Air-conditioned rooms with flat-screen TVs
- Room service available
- Travel desk for local tours



### Day 5,6,7: Trincomalee - Nilaveli Beach Hotel

Nilaveli Beach Hotel is a serene beachfront property located on the northeast coast of Sri Lanka. Offering guests a peaceful escape, this hotel provides stunning views of pristine white sands and the tranquil turquoise waters of the Indian Ocean. Its relaxed atmosphere is perfect for those seeking a tropical retreat, combining beauty with comfortable accommodations



**Star Rating:** 4 Star

#### Amenities:

- Direct beach access
- Outdoor swimming pool with sea views
- Multi-cuisine restaurant featuring fresh seafood
- Spacious, air-conditioned rooms with private balconies
- Free Wi-Fi in public areas
- Laundry services
- Tour assistance for excursions
- Water sports and snorkeling arrangements
- Ayurvedic spa services
- Beachside bar and lounge
- 24-hour room service
- Free parking facilities
- Kids' play area

### **Day 8: Pasikudah – Amaya Resort & Spa**

Located in Passikudah, offers a luxurious beachfront retreat surrounded by stunning views and natural beauty. With spacious rooms, exquisite dining options, and a full-service spa, it's the perfect spot for relaxation and rejuvenation. The resort blends modern comfort with traditional Sri Lankan hospitality for an unforgettable stay



**Star Rating:** 4 Star

#### **Amenities:**

- Outdoor pool with sun loungers
- On-site restaurant featuring local and international cuisine
- Full-service spa with wellness treatments
- Free Wi-Fi in rooms and public spaces
- Air-conditioned rooms with garden or sea views
- 24-hour reception and travel desk



### Day 9–10: Ella – Luxor Kirindi Ella

Luxor Kirindi Ella offers a cozy retreat with modern comforts, including free Wi-Fi, an outdoor pool, and a complimentary breakfast. Situated near the stunning Kirindi Ella waterfall, it's ideal for nature lovers seeking a tranquil escape, with easy access to hiking trails and ample parking for convenience



**Star Rating:** 4 Star

#### **Amenities:**

- Free Wi-Fi in rooms and public areas
- On-site restaurant offering Sri Lankan and continental meals
- Spacious rooms with stunning mountain views
- 24-hour room service
- Shuttle service to nearby attractions
- Laundry and ironing services

---

### Day 11–12: Galle – Jetwing Heritage House

Jetwing Heritage Home in Galle offers an intimate retreat that beautifully blends modern comforts with timeless colonial charm. Set within a tranquil heritage property, With its warm Sri Lankan hospitality, the home delivers a uniquely personalized experience amidst its elegant surroundings, celebrating both history and luxury







**Star Rating:** 4 Star

**Amenities:**

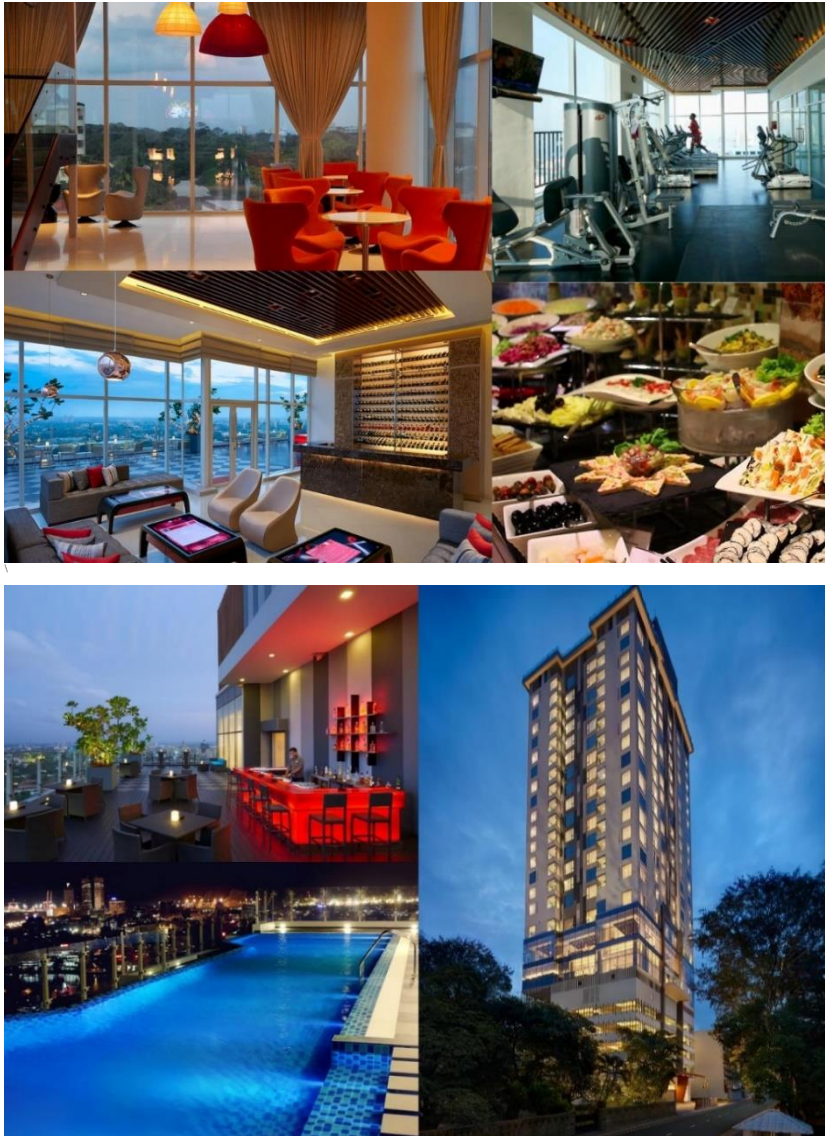
- Outdoor pool with sun terrace
- Beach access with private lounging area
- On-site fine dining restaurant and bar
- Free Wi-Fi in all areas
- Air-conditioned rooms with mini-bar and tea/coffee facilities
- 24-hour front desk
- Daily housekeeping and laundry services

**Day 13: Colombo – Cinnamon Red Colombo**

Cinnamon Red Colombo is a contemporary city hotel offering stylish accommodations and panoramic city views, perfect for a relaxing end to your tour.



Nestled in the bustling heart of Colombo, Cinnamon Red offers a modern and stylish escape for travelers. This hotel combines contemporary design with exceptional service, providing a perfect base for both relaxation and exploration. With stunning views of the city and easy access to local attractions, guests can enjoy a vibrant urban experience while indulging in the comforts of this elegant retreat.



**Star Rating:** 4 Star

**Amenities:**

- Rooftop infinity pool with skyline views
- Rooftop bar and all-day dining restaurant
- Fitness center with modern equipment
- High-speed free Wi-Fi throughout the property
- Air-conditioned rooms with smart TVs and mini-bar
- 24-hour concierge services
- Secure parking and airport transfer options

## INCLUDED EXCURSIONS FOR THE TOUR

- |  |  |
|--|--|
| <ul style="list-style-type: none"><li>▪ Pinnawala Elephant Orphanage</li><li>▪ Kandy Upper Lake Drive</li><li>▪ Kandyan Cultural Dance Show</li><li>▪ Temple of the Sacred Tooth Relic</li><li>▪ Pidurangala Rock Sunset</li><li>▪ Sigiriya Rock Fortress</li><li>▪ Sigiriya Village Tour and Cooking Demonstration</li><li>▪ Ayurveda Spa Treatment</li><li>▪ Dambulla Cave Temple</li><li>▪ Minneriya/Kawudulla Wildlife Safari</li><li>▪ Anuradhapura Sacred City Tour (Jaya Sri Maha Bodhi, Ruwanweli Maha Seya, Isurumuniya Temple)</li><li>▪ Thirukoneswaram Kovil</li><li>▪ Marble Beach and Uppuveli Beach</li></ul> | <ul style="list-style-type: none"><li>▪ Pigeon Island Snorkeling</li><li>▪ Nilaveli Beach Relaxation</li><li>▪ Pasikudah and Kalkudah Beaches</li><li>▪ Batticaloa Fort</li><li>▪ Pottuvil Lagoon Safari</li><li>▪ Kumana National Park Safari</li><li>▪ Calypso Train Ride (Ella Highlands)</li><li>▪ Little Adam's Peak Hike</li><li>▪ Nine Arch Bridge Visit</li><li>▪ Pallewela Ella Waterfall</li><li>▪ Kosgoda Sea Turtle Hatchery</li><li>▪ Madu River Boat Safari</li><li>▪ Coconut Tree Hill (Mirissa)</li><li>▪ Dewata Beach Surfing</li><li>▪ Galle Fort Exploration</li><li>▪ Colombo City Tour (Gangaramaya Temple, Pettah Market, Shopping).</li></ul> |
|--|--|



## OPTIONAL:

**Nil Diya Pokuna (Underground Cave Pool):** Available as an optional excursion during the Ella sightseeing tour.

