



ULTIMATE SRI LANKA

Bespoke tour for 16 days, 15 nights



At **Azure Island Tours**, we're dedicated to creating exceptional travel experiences that cater to your individual needs. Our team of travel experts takes the time to understand your preferences, ensuring every trip is unique, personalized, and hassle-free. Whether you're after adventure, relaxation, or cultural immersion, we design every detail with you in


BOOK NOW

DAY 01:

NEGAMBO / WAIKKALA

> **TIME & ROUTE:** COLOMBO AIRPORT → TRANSFER TO NEGAMBO

> **ACTIVITIES:**

- WELCOME BY OUR REPRESENTATIVE AT SRI LANKA, BANDARANAIKE INTERNATIONAL AIRPORT
- YOU WILL BE TRANSFERRED TO YOUR HOTEL IN NEGAMBO
- CHECK IN AT HOTEL AND RELAX



> **OVERNIGHT STAY:** PLEDGE SCAPES, NEGAMBO OR SIMILAR

> **TOUR HIGHLIGHTS:** WARM WELCOME, BEACHSIDE RELAXATION, AND REST AFTER YOUR FLIGHT.

DAY 02 :

ANURADHAPURA

> **TIME & ROUTE:** NEGAMBO → TRANSFER TO ANURADHAPURA (APPROX. 4.5 HOURS)

> **ACTIVITIES:**

- JEEP SAFARI IN WILPATTU NATIONAL PARK

> **OVERNIGHT STAY:** RAJARATA HOTEL, ANURADHAPURA OR SIMILAR

> **TOUR HIGHLIGHTS:** WILDLIFE ADVENTURE, NATURAL BEAUTY, AND ANCIENT WILDERNESS

WILPATTU NATIONAL PARK

- It is Sri Lanka's largest and one of the oldest protected areas. The area is one of the most important elephant habitats in the country and is also a great place to observe the elusive Sri Lankan leopard and the sloth bear.



DAY 03:

ANURADHAPURA EXPLORATION

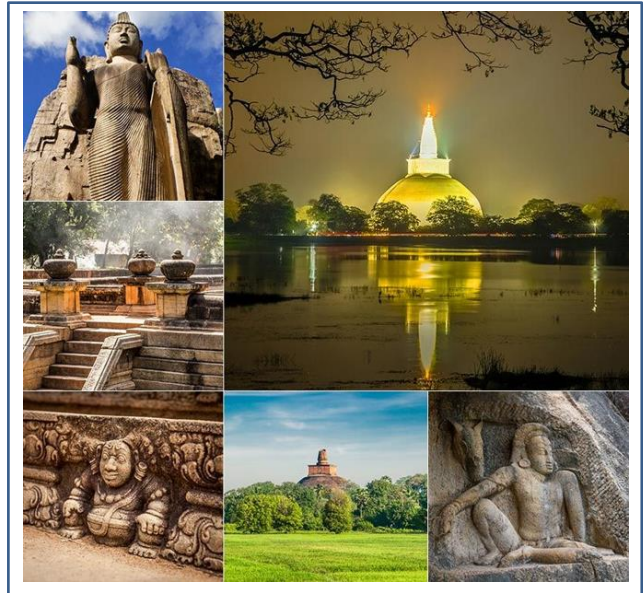
> **TIME & ROUTE:** ANURADHAPURA SIGHTSEEING

> **ACTIVITIES:**

- AFTER BREAKFAST AT THE HOTEL.
- ANURADHAPURA CITY TOUR.
- VISIT SRI MAHABODHI AND ISURUMUNIYA.
- EVENING VISIT TO MIHINTALE ANCIENT CITY

> **OVERNIGHT STAY:** RAJARATA HOTEL, ANURADHAPURA OR SIMILAR

> **TOUR HIGHLIGHTS:** SACRED BUDDHIST SITES, ANCIENT RUINS, AND CULTURAL IMMERSION

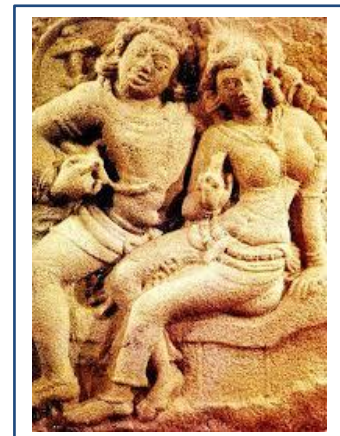


SACRED CITY ANURADHAPURA

- Anuradhapura, a Ceylonese political and religious capital that flourished for 1,300 years, Hidden away in dense jungle for many years, the splendid site, with its palaces, monasteries and monuments, is now accessible once again. The glories of that age can be found in the archaeological treasures that still give a pretty good idea of how the city looked in its heyday.

ISURUMUNIYA TEMPLE

- Isurumuniya is a Buddhist temple has been built by King Devanam Piyatissa between 250 – 210 BC. There are four carvings of special interest in this Vihara. They are the Isurumuniya Lovers, Elephant Pond and The Royal Family.



MIHINTALE ANCIENT CITY.

- This is a mountain peak near Anuradhapura. It is believed by Sri Lankans to be the site of a meeting between the Buddhist monk Mahinda and King Devanampiyatissa which inaugurated the presence of Buddhism in Sri Lanka.

DAY 04:

JAFFNA

> **TIME & ROUTE:** ANURADHAPURA → TRANSFER TO JAFFNA (APPROX. 5.5 HOURS)

> **ACTIVITIES:**

- AFTER BREAKFAST CHECK OUT FROM THE HOTEL AND TRANSFER TO JAFFNA.
- CHECK IN THE HOTEL AND RELAX.



> **OVERNIGHT STAY:** JETWING, JAFFNA OR SIMILAR

> **TOUR HIGHLIGHTS:** NORTHERN CHARM, TAMIL CULTURE, AND RELAXATION

DAY 05:

JAFFNA EXPLORATION

> **TIME & ROUTE:** JAFFNA SIGHTSEEING

> **ACTIVITIES:**

- VISIT NAGADEEPA TEMPLE (BOAT RIDE TO THE ISLAND).
- CHECK IN THE HOTEL AND RELAX.

> **OVERNIGHT STAY:** JETWING, JAFFNA OR SIMILAR

> **TOUR HIGHLIGHTS:** ISLAND TEMPLE, RELIGIOUS HERITAGE, AND CULTURAL CONNECTIONS

NAGADEEPA TEMPLE

- Nagadeepa Purana Vihara is an ancient Buddhist temple. It is among the country's sixteen holiest Buddhist shrines.
- According to contemporary history, the Gautama Buddha visited the site after five years of attaining Enlightenment to settle the dispute between two warring Naga kings, Chulodara and Mahodara.



DAY 06:

TRINCOMALEE

- > **TIME & ROUTE:** : JAFFNA → TRANSFER TO TRINCOMALEE (APPROX. 4.5 HOURS)
- > **ACTIVITIES:**
 - JAFFNA CITY TOUR (LIBRARY, FORT, NALLUR TEMPLE)
 - TRANSFER TO TRINCOMALEE
 - CHECK IN THE HOTEL AND RELAX.
- > **OVERNIGHT STAY:** TRINCO BLUE , TRINCOMALEE OR SIMILAR
- > **TOUR HIGHLIGHTS:** HERITAGE, COASTAL BEAUTY, AND CULTURAL CONTRAST



JAFFNA CITY TOUR

- Jaffna is a city on the northern tip of Sri Lanka. Nallur Kandaswamy is a huge Hindu temple with golden arches and an ornate gopuram tower.
- By the coast, star-shaped Jaffna Fort was built by the Portuguese in the 17th century and later occupied by the Dutch and British.



- Jaffna Public Library is a symbol of the city's post-war regeneration. Jaffna Archaeological Museum has Dutch cannons and pre-colonial artifacts.



DAY 07:

TRINCOMALEE EXCURSIONS

> **TIME & ROUTE:** TRINCOMALEE SIGHTSEEING

> **ACTIVITIES:**

- MORNING 6.00 A.M. START WHALES AND DOLPHIN WATCHING.
- (BREAKFAST CAN ARRANGE TAKE AWAY OR LATER)
- OPTIONAL SNORKELING OR DIVING IN NILAVELI

> **OVERNIGHT STAY:** TRINCO BLUE , TRINCOMALEE OR SIMILAR

> **TOUR HIGHLIGHTS:** MARINE WILDLIFE, OCEAN ADVENTURE, AND COASTAL FUN

WHALES AND DOLPHIN WATCHING

- It is a whale of a time in the east coast since the sandy beaches and deep waters of trincomalee give rise to some excellent dolphin and whale sightings, particularly during the months of march to may but also random sightings till september



SNORKELING AND DIVING

- Snorkeling in Nilaveli & Trincomalee area is the absolute highlight of your stay on the east coast. You experience the most vibrant coral reefs of Sri Lanka, soft and hard corals, schools of colorful fish and different coral fish of the Indian Ocean.



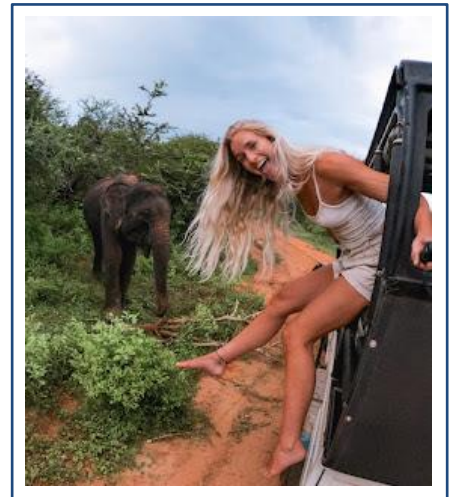
DAY 08:

HABARANA

- > **TIME & ROUTE:** ANURADHAPURA → TRANSFER TO JAFFNA (APPROX. 5.5 HOURS)
- > **ACTIVITIES:**
 - AFTER THE BREAKFAST CHECK OUT AND TRANSFER TO HABARANA
 - EVENING RELAX AT HOTEL.
 - YOU CAN CHOOSE TO ENJOY MINNERIYA WILDLIFE SAFARI AS OPTIONAL.
- > **OVERNIGHT STAY:** CAMELIA RESORT & SPA, SEEGIRIYA OR SIMILAR
- > **TOUR HIGHLIGHTS:** SAFARI OPTIONS, WILDERNESS, AND RELAXATION

OPTIONAL:

- Jeep safari to Minneriya national park.
- These national parks in Habarana are the best places in the country to see the wild elephants.
- Which are often present in huge no of elephants.



DAY 09:

DAY TRIP TO SIGIRIYA

- > **TIME & ROUTE:** HABARANA → SEEGIRIYA (APPROX. 20 MINUTES)
- > **ACTIVITIES:**
 - OPTIONAL: CLIMB SIGIRIYA LION ROCK FORTRESS
 - SIGIRIYA VILLAGE TOUR WITH COOKING DEMO
 - CATAMARAN BOAT TOUR AT HIRIWADUNNA LAKE
- > **OVERNIGHT STAY:** CAMELIA RESORT & SPA, SEEGIRIYA OR SIMILAR
- > **TOUR HIGHLIGHTS:** UNESCO HERITAGE SITE, LOCAL EXPERIENCES, AND SCENIC CHARM

SEEGIRIYA LION ROCK

- The King Kasyapa (477-495 AD), who chose this site as his new capital built an impressive palace right on top of the rock column, accessible only through the mouth of an enormous carved lion.
- A popular tourist destination Sigiriya is also renowned for its ancient paintings (frescos) which are reminiscent of the Ajantha caves of India. It is one of the seven world heritage site of Sri Lanka. It is also declared by UNESCO as the 8th wonder of the world.



> SIGIRIYA VILLAGE TOUR + COOKING DEMONSTRATION

> CATAMARAN BOAT TOUR OF HIRIWADUNNA LAKE

- There after proceed to experience the Sigiriya village track and cooking



DAY 10:

KANDY

> **TIME & ROUTE:** SEEGIRIYA → TRANSFER TO KANDY — (APPROX. 2.5 HOURS)

> **ACTIVITIES:**

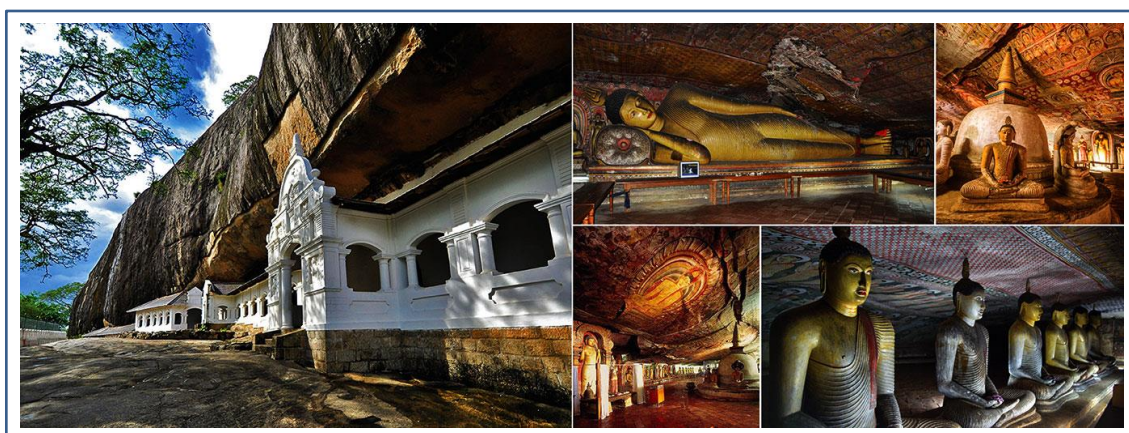
- AFTER BREAKFAST CHECK OUT FROM THE HOTEL AND TRANSFER TO KANDY.
- VISIT DAMBULLA CAVE TEMPLE
- EXPLORE AYURVEDIC VILLAGE AND SPICE GARDEN

> **OVERNIGHT STAY:** ROYAL KANDYAN, KANDY OR SIMILAR

> **TOUR HIGHLIGHTS:** BUDDHIST HERITAGE, NATURAL HEALING, SCENIC TRANSITION TO KANDY

DAMBULLA CAVE TEMPLE

- Dambulla is the largest and best-preserved cave temple complex in Sri Lanka. The rock towers 160 m over the surrounding plains.
- there are more than 80 documented caves in the surrounding area. Major attractions are spread over five caves, which contain statues and paintings. These paintings and statues are related to Gautama Buddha and his life. There are a total of 153 buddha statues



AYURVEDIC VILLEGE

- From enhancing culinary delights to serving as key components in traditional medicine, spices have played a pivotal role in shaping the island's identity and fostering cross-cultural exchanges.

DAY 11:

ELLA

> **TIME & ROUTE:** KANDY → TRANSFER TO ELLA — APPROX. 6 HOURS (INCLUDING TRAIN RIDE)

> **ACTIVITIES:**

- BREAKFAST AT THE HOTEL EARLY MORNING
- CHECK OUT FROM KANDY AND PROCEED TO ELLA VIA NUWARA ELIYA SCENIC TRAIN RIDE FROM NANU OYA TO ELLA
- VISIT TEA PLANTATION AND FACTORY.

> **OVERNIGHT STAY:** MORNING DEW, ELLA OR SIMILAR

> **TOUR HIGHLIGHTS:** HILL COUNTRY CHARM, TEA TRAILS, AND ICONIC TRAIN JOURNEY



TEA PLANTATION AND FACTORY VISIT

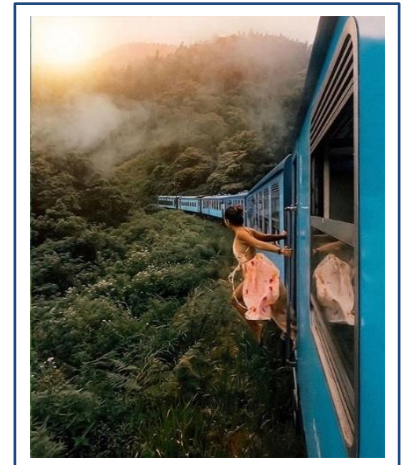


- Ceylon tea was noted as one of the country's foremost export crops earning an annual revenue in excess of us \$1 billion, with the introduction of an abundance of highly innovative, value-added products over the past decade or so.
- Ceylon tea now enjoys an enviable international reputation. A product that began as a diversification experiment in 1867 spanning just 19 acres of land in Kandy had expanded its cultivation to six principal regions within the country.
- Sri Lanka is an island made for tea. Tea is produced throughout the year and the total tea production is around 340 million kg per year. Sri Lanka's tea growing areas are mainly concentrated in the central highlands and the southern interior of the island.



ENJOY A TRAIN RIDE FROM NANUOYA TO ELLA

- Sri Lanka's most scenic train ride is one of the best in the world. Sri Lanka's Colombo to Badulla train ride deserves a place on your bucket list, and these three scenic stops along the route prove why. The train ride from Colombo to Badulla will awaken all your senses



- > YOUR GUIDE WILL PICK YOU UP FROM THE STATION THERE AFTER CONTINUE THE JOURNEY TO HOTEL.
- > CHECK IN THE HOTEL AND RELAX.

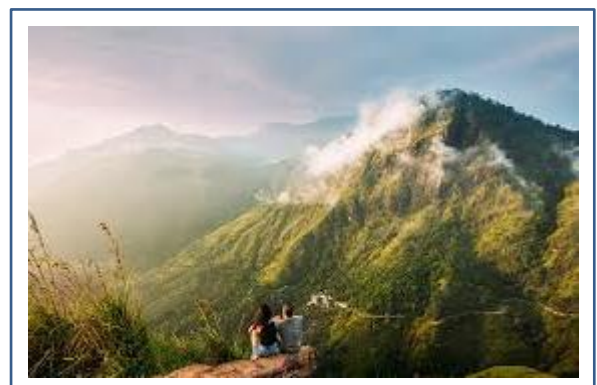
DAY 12:

ELLA EXPLORATION

> **TIME & ROUTE:** ELLA EXCURSIONS

> **ACTIVITIES:**

- HIKE LITTLE ADAM'S PEAK
- VISIT NINE ARCH BRIDGE
- RAWANA WATERFALL



> **OVERNIGHT STAY:** MORNING DEW, ELLA OR SIMILAR

> **TOUR HIGHLIGHTS:** NATURE HIKES, INSTAGRAMMABLE BRIDGES, AND MOUNTAIN AIR

LITTLE ADOM'S PEAK

- The hike to the top of Little Adam's Peak is fairly easy; the peak is 1141m high, so it is more of a two-hour-long leisurely walk.

NINE ARCH BRIDGE

- The bridge was designed to accommodate a challenging nine-degree curve and steep gradient. Built entirely by local labor under British supervision, the construction faced significant logistical challenges, including difficult terrain and material transport.



DAY 13:

UDAWALAWA

> **TIME & ROUTE:** ELLA → TRANSFER TO UDAWALAWA — APPROX. 3 HOURS

> **ACTIVITIES:**

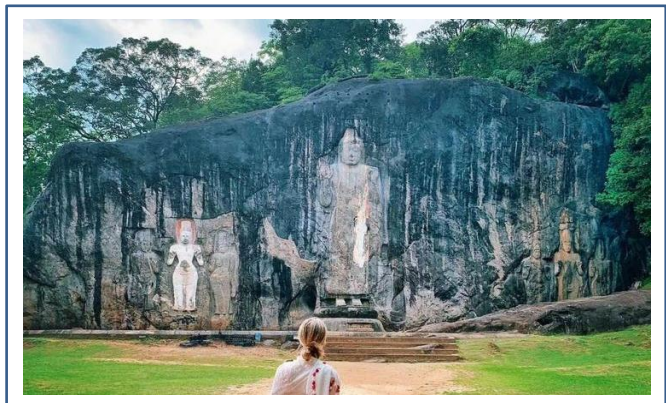
- VISIT BUDURUWAGALA TEMPLE
- POTTERY DEMONSTRATION
- OPTIONAL: SAFARI AT UDAWALAWA NATIONAL PARK

> **OVERNIGHT STAY:** CHAARYA RESORT & SPA, YALA OR SIMILAR

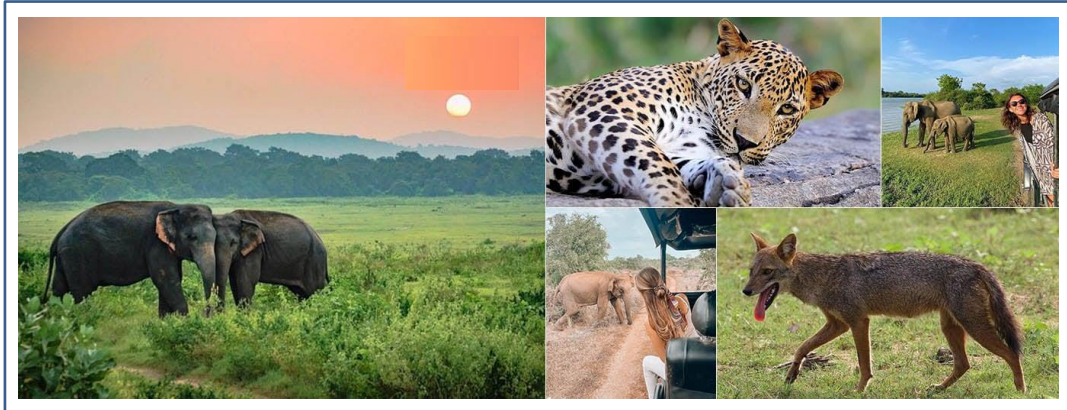
TOUR HIGHLIGHTS: SACRED ART, LOCAL CRAFT, AND SAFARI OPTIONS

BUDURUWAGALA TEMPLE

- Buduruvagala, apply named "The Rock of Buddhist Sculptures," stands as a timeless testament to Sri Lanka's rich cultural and religious heritage.
- At the heart of Buduruvagala lies its most striking feature: the towering standing Buddha statue, reaching an impressive 15 meters in height.
- Buduruvagala stands as a timeless sanctuary of spiritual devotion and artistic mastery. With its majestic Buddha figures, mysterious oil lamp, and rich tapestry of legends, Buduruvagala continues to captivate hearts and minds.



UDAWALAWA NATIONAL PARK (OPTIONAL)



- Udawalawe National Park was created to provide a sanctuary for wild animals displaced by the construction of the Udawalawe Reservoir on the Walawe River, as well as to protect the catchment of the reservoir. The reserve covers 30,821 hectares (119.00 sq mi) of land area.

DAY 14:

BEACH

> **TIME & ROUTE:** UDAWALAWA → TRANSFER TO SOUTHERN BEACH — APPROX. 3.5 HOURS

> **ACTIVITIES:**

- VISIT ELEPHANT TRANSIT HOME
- EXPLORE GALLE DUTCH FORT & CITY

> **OVERNIGHT STAY:** THE PALMS, BENTOTA OR SIMILAR

TOUR HIGHLIGHTS: ELEPHANT CONSERVATION, COLONIAL CITY CHARM, COASTAL VIBE



ELEPHANT TRANSIT HOME

- The complex is a halfway house for orphaned elephants. After rehabilitation, the elephants are released back into the wild, many into Udawala National Park.
- Even if you don't get to get up close with the elephants, it's still fun to see them at feeding time from a viewing platform



elephant Transit Home (Open During in Feeding time 10.30am / 2.30pm / 6.00pm)

END ROUTE VISIT GALL FORT

Old town of Galle and its fortifications:

- Founded in the 16th century by the Portuguese, Galle reached the height of its development in the 18th century, before the arrival of the British.

It is the best example of a fortified city built by Europeans in South and South-East Asia,

showing the interaction between European architectural styles and South Asian traditions.



DAY 15:

ENJOY THE SOUTHERN COAST

> **TIME & ROUTE:** LOCAL EXCURSIONS

> **ACTIVITIES:**

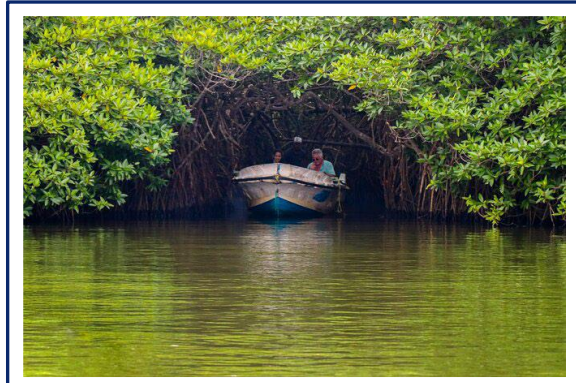
- MADU RIVER BOAT SAFARI
- VISIT KOSGODA SEA TURTLE CONSERVATION CENTRE

> **OVERNIGHT STAY:** THE PALMS, BENTOTA OR SIMILAR

> **TOUR HIGHLIGHTS:** RIVER ECOSYSTEMS, WILDLIFE PROTECTION, AND BEACH RELAXATION

MADU RIVER BOAT SAFARI

- Madu River is a complex coastal wetland ecosystem. Even though referred to as a river, it resembles more a lagoon or estuary in structure. Madu River which 770 Ha consist of open water while 145 Ha account for 64 small islands.
- Madu River complex is a very rich bio diversified hot spot and sensitive eco system with ecological significances which higher than any other coastal eco systems island wide.



SEA TURTLES CONSERVATION CENTER:

- Presently they are five species of Turtles that are taken care in the hatchery and rescue centre. Sush species are tha Olive Ridley turtles, Leatherback Turtles, Loggerheads Turtles, Hawksbill Turtles, and Green Turtles.
- The facilities of the sea turtle hatchery and rescue Centre all state of the art, complete with water tanks to care new born Turtles along with adult Turtle species that have been rescued from the see due to injurious.



DAY 16

DEPARTURE

- > CHECK OUT AND TRANSFER TO BANDARANAYAKE INTERNATIONAL AIRPORT
- > CATCH YOUR FLIGHT BACK HOME WITH ALL THE HAPPY MEMORIES OF THE BEAUTIFUL COUNTRY SRI LANKA
- > NOTE - TRAVEL ITINERARY WILL DEPEND ON YOUR FLIGHT ARRIVAL AND DEPARTURE TIME
- > LATE CHECK –OUT SUBJECTED ON AVAILABILITY



CRAFT YOUR OWN JOURNEY WITH NO EXTRA COST.

👉 Visit: www.azureislandtours.co.uk

 Email: office@azureislandtours.co.uk

 Call us: +44 7925 073959

TOUR HIGHLIGHTS

Day 1:

Arrival in Colombo, transfer to Negombo. Beachside relaxation and rest.

Day 2:

Transfer to Anuradhapura. Jeep Safari at Wilpattu National Park.

Day 3:

Explore Anuradhapura, Sri Maha Bodhi, Isurumuniya, and Mihintale Ancient City.

Day 4:

Transfer to Jaffna. Leisure time at the hotel.

Day 5:

Boat trip to Nagadeepa Temple, Evening relax at hotel and beach.

Day 6:

Jaffna city tour (Library, Fort, Nallur Temple), transfer to Trincomalee.

Day 7:

Whale and dolphin watching in the morning. Optional snorkeling or diving in Nilaveli.

Day 8:

Transfer to Habarana. Evening relaxation or optional Minneriya safari.

Day 9:

Optional climb of Sigiriya Rock Fortress. Sigiriya village tour, cooking demo, and catamaran ride.

Day 10:

Visit Dambulla Cave Temple and Ayurvedic Village. Transfer to Kandy.

Day 11:

Tea plantation tour, Nuwara Eliya visit, scenic train ride from Nanu Oya to Ella.

Day 12:

Hike Little Adam's Peak and visit Nine Arch Bridge.

Day 13:

Visit Buduruwagala Temple, pottery demo, and optional Udawalawe Safari.

Day 14:

Visit Elephant Transit Home, explore Galle Dutch Fort, transfer to Bentota.

Day 15:

Madu River boat safari and Kosgoda Sea Turtle Conservation Center.

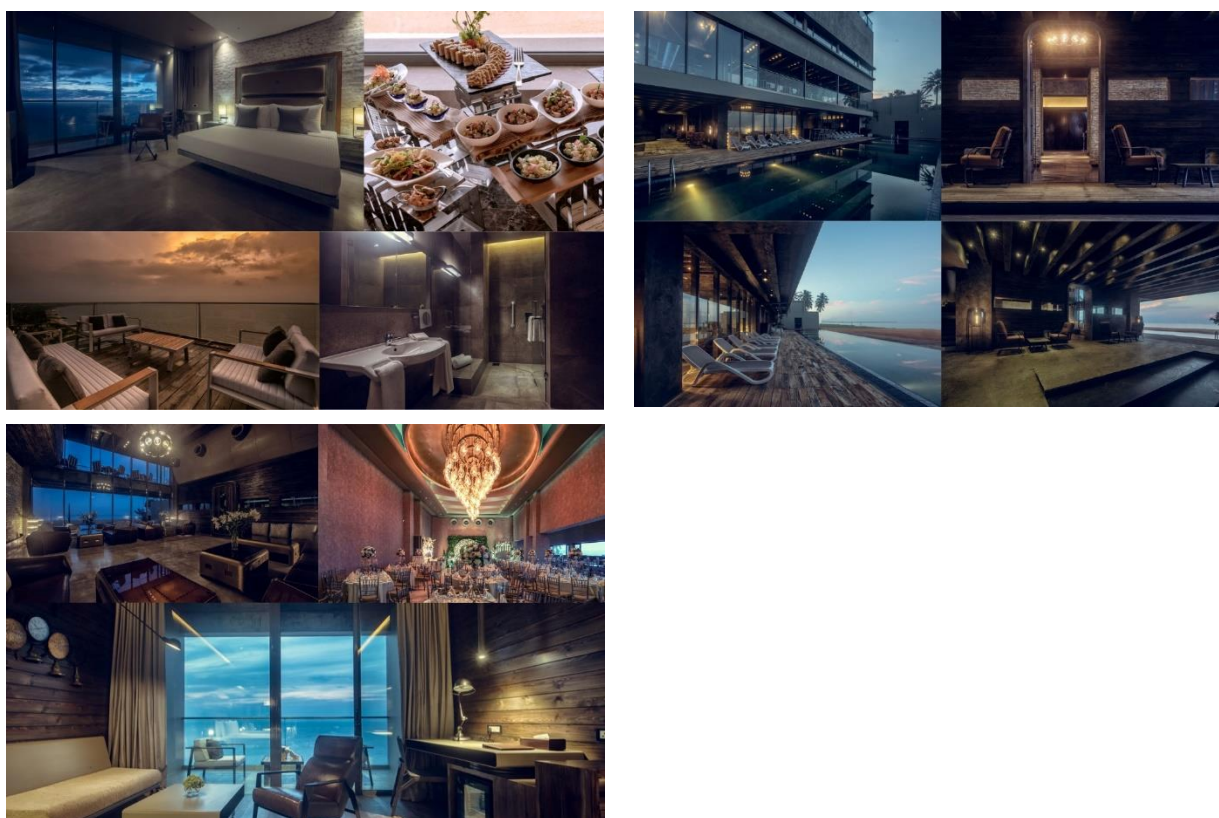
Day 16:

Departure from Colombo.

HOTEL DETAILS

Day 1: Negambo – Pledge Scape (Or Similar)

Pledge Scape is a luxurious 5-star beachfront hotel located in the coastal city of Negombo, Sri Lanka. Situated just 12 km from Bandaranaike International Airport, it offers guests a serene escape with stunning ocean views and modern amenities. The hotel features 32 elegantly designed rooms, including deluxe and premium options, each equipped with private balconies, spacious bathrooms, and contemporary furnishings. Guests can indulge in a variety of dining experiences at the on-site restaurant, Le Port, which serves a fusion of local and international cuisines. With facilities like an outdoor infinity pool, rooftop gym, and direct beach access.



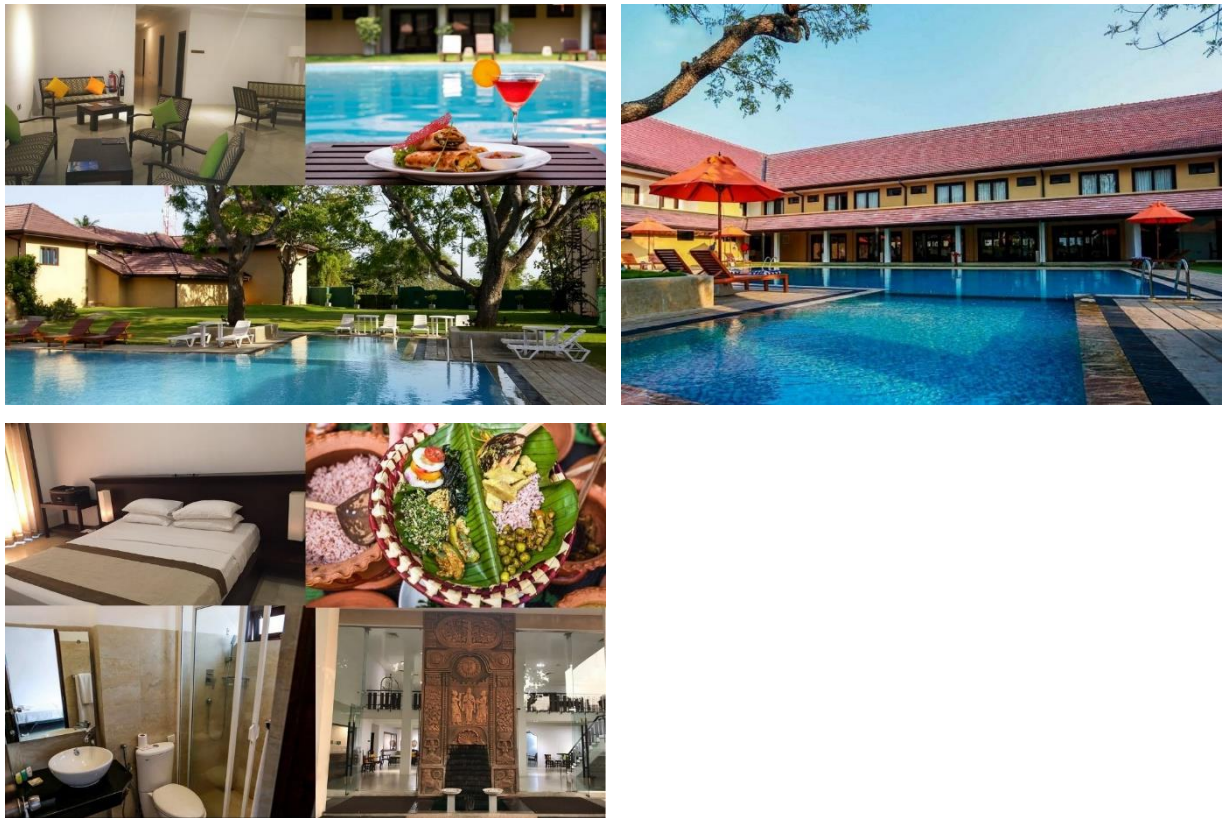
Star Rating: 5 Star

Amenities:

- Outdoor infinity swimming pool
- Rooftop gymnasium
- Beachfront access
- Le Port restaurant offering local and international cuisine
- SkyDeck rooftop bar
- Old Salt bar
- 24-hour front desk service
- Free Wi-Fi throughout the property
- Complimentary airport shuttle service
- Free on-site parking
- Daily housekeeping and laundry services
- In-room tea/coffee makers
- Private balconies with sea views
- Banquet and conference facilities accommodating up to 350 guests
- Accessibility features for disabled guests
- Concierge and tour desk services
- Safety deposit boxes in rooms
- Air conditioning in all rooms
- Flat-screen TVs with satellite channels

Day 2-3: Anuradhapura – Rajarata Hotel (Or Similar)

Rajarata Hotel is a family-owned luxury hotel situated in the heart of Anuradhapura, Sri Lanka's ancient capital. Established in the 1970s and recently refurbished, the hotel offers a blend of historical charm and modern amenities. Nestled within a two-acre property, it provides guests with a serene environment, making it an ideal retreat after exploring the nearby UNESCO World Heritage sites. The hotel's proximity to iconic ancient landmarks and its tranquil surroundings make it a perfect getaway for both leisure and business travelers.



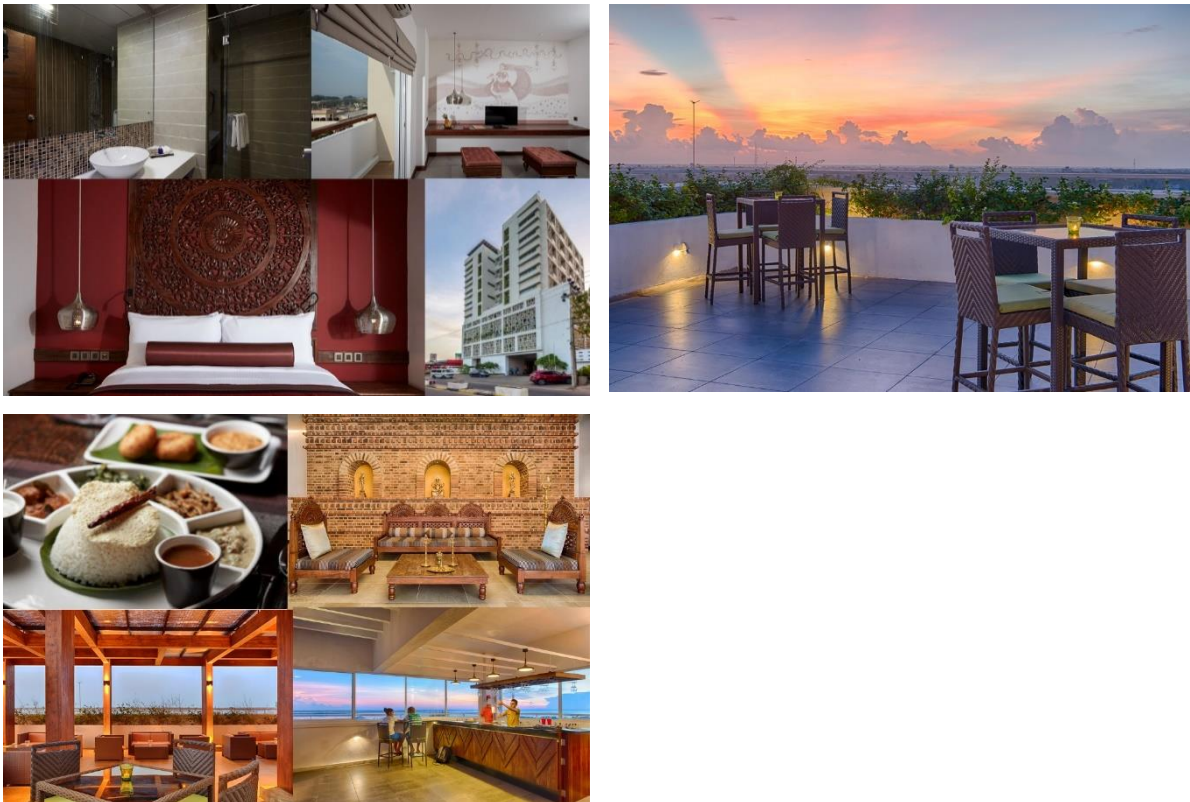
Star Rating: 3 Star

Amenities:

- Outdoor swimming pool
- Free Wi-Fi throughout the property
- Free private parking
- Family-friendly rooms
- Two on-site restaurants: Tranquil Restaurant and Escape Bar
- 24-hour front desk service
- Room service
- Bar/lounge area
- Breakfast available
- Airport shuttle service (additional charge)
- Meeting and banquet facilities
- Tour desk and concierge services
- Laundry and dry cleaning services
- Air-conditioned rooms with flat-screen TVs and private balconies
- Non-smoking rooms
- Facilities for disabled guests

Day 4-5: Jaffna – Jetwing Jaffna (Or Similar)

Jetwing Jaffna is a modern luxury hotel situated in the heart of Jaffna, offering guests a blend of contemporary comfort and rich northern heritage. Standing seven stories tall, the hotel provides panoramic views of the city and the surrounding lagoon. Its central location places guests within walking distance of key landmarks such as the Jaffna Public Library, Jaffna Fort, and the bustling local market. As one of the first luxury establishments in the region post-conflict, Jetwing Jaffna embodies a commitment to revitalizing the area's hospitality scene while honoring its cultural roots.



Star Rating: 4 Star

Amenities:

- 55 Deluxe Rooms with private balconies offering city or lagoon views
- On-site restaurant serving traditional Jaffna cuisine and international dishes
- Bar and lounge area for relaxation
- Complimentary Wi-Fi throughout the property
- 24-hour front desk and concierge services
- Free private parking for guests
- Daily housekeeping and laundry services
- Air-conditioned rooms equipped with flat-screen TVs and minibars
- Facilities for disabled guests
- Proximity to major attractions and transportation hubs

Day 6-7: Trincomalee – Trinco Blue (Or Similar)

Trinco Blu by Cinnamon is a 4-star beachfront resort located in Uppuveli, just 4 km from the historic city of Trincomalee. Originally a 1970s resort, it has been transformed into a retro-chic destination featuring bleached wooden decks, rattan furniture, and minimalist interiors that reflect the coastal charm of Sri Lanka's eastern shores. The resort offers 81 beautifully appointed rooms, including Superior Rooms, Beach Chalets, and Suites, each designed to provide a tranquil haven for guests. With its oceanfront views, spacious chalets, and amenities, Trinco Blu by Cinnamon is the perfect choice for guests seeking relaxation and adventure in Trincomalee.



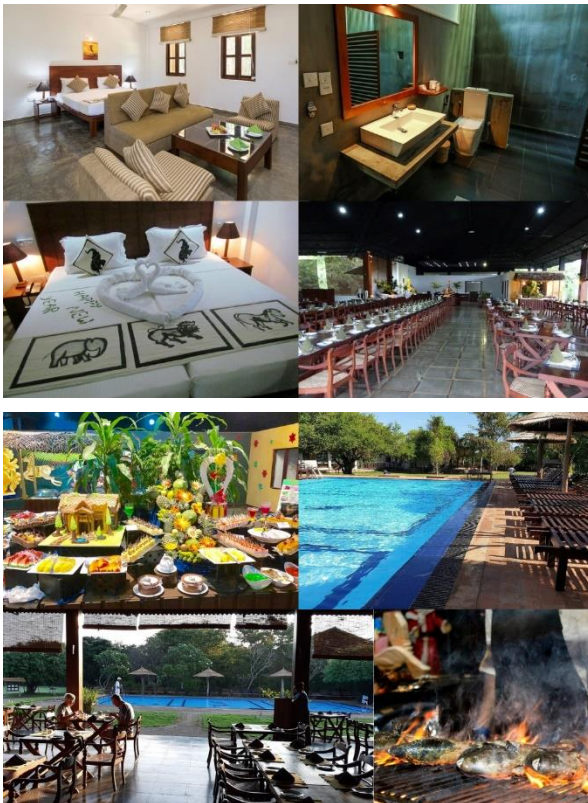
Star Rating: 4 Star

Amenities:

- Private beach access
- Outdoor freshwater swimming pool
- PADI-certified dive center offering snorkeling, fishing, and scuba diving
- Three dining options:
 1. Captain's Deck – serving Asian and continental dishes
 2. The Crab – specializing in seafood in a semi-alfresco setting
 3. Rum Hold – bar offering exclusive cocktails and locally infused spirits
- Free Wi-Fi throughout the property
- Air-conditioned rooms with flat-screen TVs, minibars, and tea/coffee making facilities
- Room service and daily housekeeping
- Spa and wellness center
- 24-hour front desk and concierge services
- Free private parking
- Laundry and dry cleaning services
- Facilities for disabled guests
- Airport transfer service
- Eco-certified resort with sustainable practices
- Free private parking for guests
- Daily housekeeping and laundry services
- Air-conditioned rooms equipped with flat-screen TVs and minibars
- Facilities for disabled guests
- Proximity to major attractions and transportation hubs

Day 8-9: Sigiriya – Camellia Resort & Spa (Or Similar)

Camellia Resort and Spa is a tranquil 4-star retreat nestled in the lush greenery of Audangawa, just a 15-minute drive from the iconic Sigiriya Rock Fortress. The resort offers a serene escape for travelers seeking relaxation and rejuvenation amidst nature. Guests can enjoy well-appointed cottages with private balconies, indulge in spa treatments, and savor local and international cuisine at the on-site restaurant. With its proximity to cultural landmarks and natural attractions, Camellia Resort and Spa provides an ideal base for exploring the rich heritage of the region.



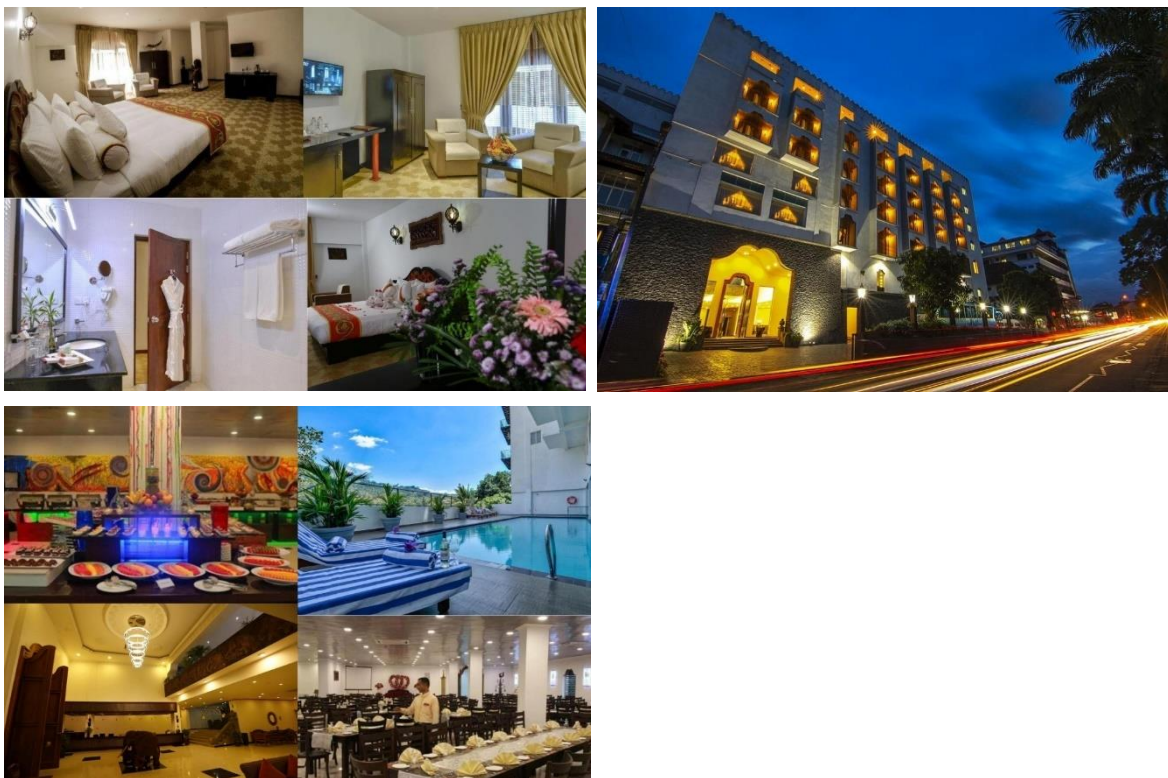
Star Rating: 4 Star

Amenities:

- Outdoor swimming pool
- Spa and wellness center with sauna and massage services
- On-site restaurant and bar
- Free Wi-Fi throughout the property
- Air-conditioned rooms with satellite TV and minibar
- Private balconies with garden or pool views
- 24-hour front desk and concierge services
- Laundry and dry cleaning services
- Free private parking
- Proximity to Sigiriya Rock Fortress and Minneriya National Park

Day 10: Kandy – Royal Kandyan (Or Similar)

Royal Kandyan is a contemporary 4-star hotel situated on Peradeniya Road, just a short drive from Kandy's central attractions. Its strategic location offers easy access to notable landmarks such as the Temple of the Tooth Relic and the Royal Botanical Gardens. The hotel features 55 elegantly designed rooms that blend traditional Sri Lankan aesthetics with modern comforts. Guests can enjoy panoramic views of the surrounding hills, indulge in local and international cuisine at the on-site restaurant, and unwind with various leisure facilities. Royal Kandyan provides a serene retreat for travelers exploring the cultural heritage of Kandy.



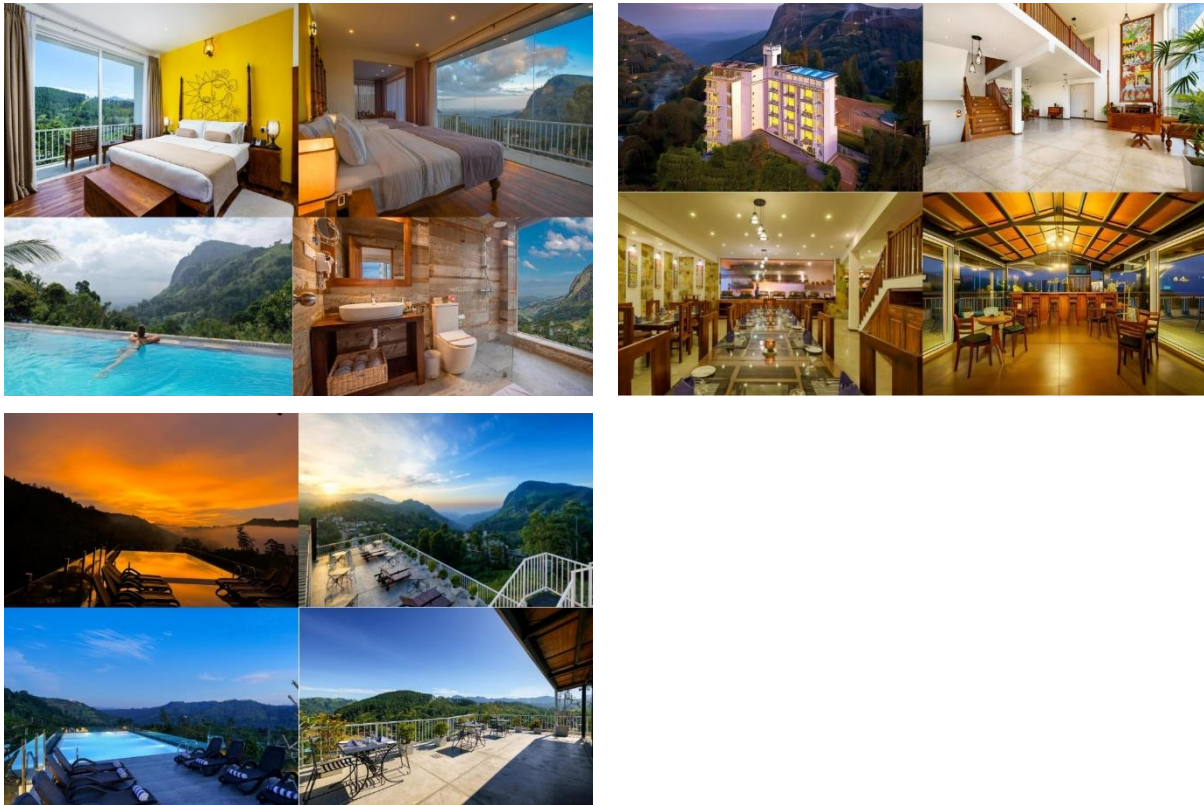
Star Rating: 4 Star

Amenities:

- Outdoor swimming pool
- Spa and wellness center offering massages and treatments
- Fully equipped fitness center
- On-site restaurant serving local and international dishes
- Bar/lounge area
- Complimentary Wi-Fi throughout the property
- Air-conditioned rooms with flat-screen TVs, minibars, and in-room safes
- 24-hour front desk and concierge services
- Room service and daily housekeeping
- Laundry and dry cleaning services
- Free private parking
- Airport shuttle service (additional charge)
- Business center and meeting facilities
- Gift shop and currency exchange
- Accessibility features for disabled guests

Day 11-12: Ella – Morning Dew (Or Similar)

Nestled amidst the lush green hills of Ella, Morning Dew Boutique Hotel offers a serene retreat with panoramic views of the surrounding landscapes. Established in 2017, the hotel combines contemporary design with traditional Sri Lankan hospitality, providing guests with a tranquil escape. Its prime location places it just 4.3 km from the iconic Demodara Nine Arch Bridge and within walking distance of Ella Railway Station, making it an ideal base for exploring the region's natural beauty and cultural landmarks.



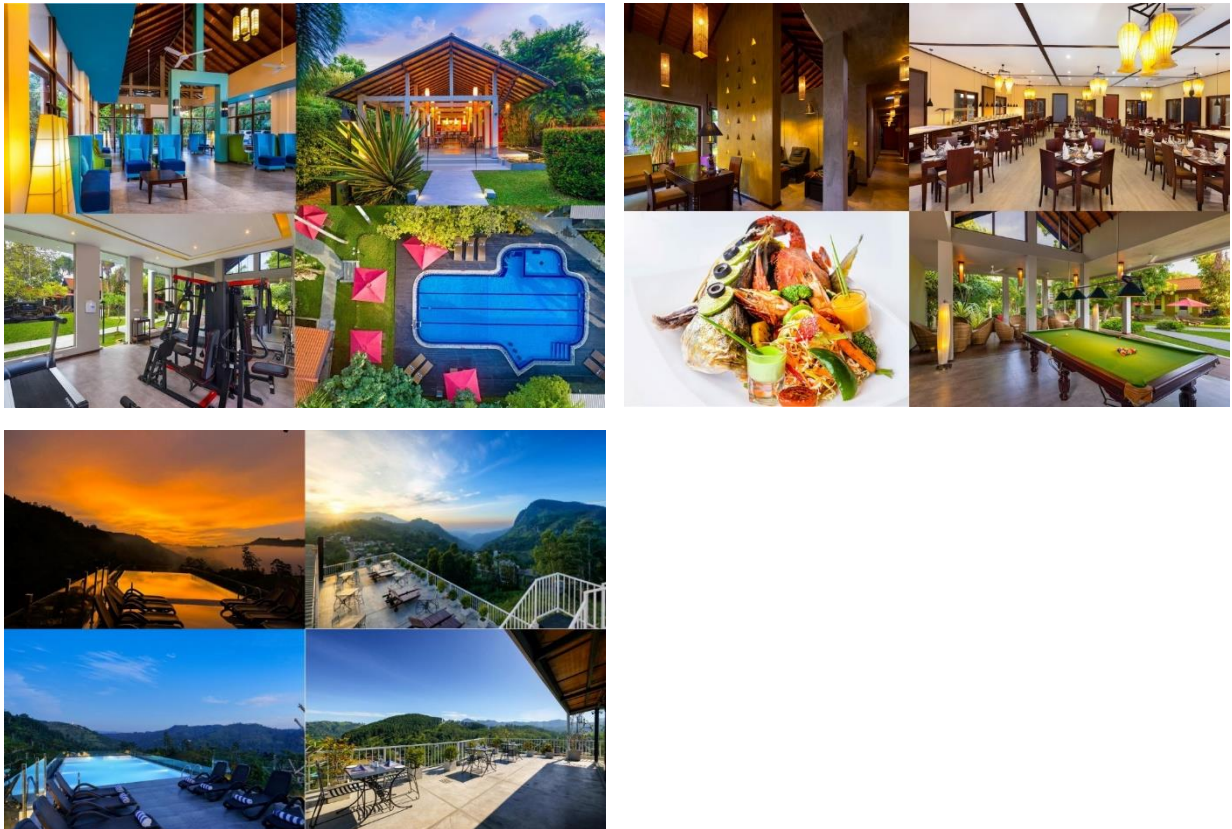
Star Rating: 4 Star

Amenities:

- Rooftop infinity swimming pool with panoramic views
- Spa and wellness center
- On-site restaurant and bar
- Outdoor fireplace and sun terrace
- Free Wi-Fi throughout the property
- Air-conditioned rooms with private balconies
- Family rooms and shared kitchen facilities
- 24-hour front desk and concierge services
- Room service and daily housekeeping
- Free private parking
- Airport shuttle service (additional charge)
- Proximity to Ella Rock, Little Adam's Peak, and Ella Spice Garden

Day 13: Yala – Chaarya Resort & Spa (Or Similar)

Chaarya Resort & Spa is a serene 4-star retreat nestled in the lush landscapes of Tissamaharama, just a 30-minute drive from Yala National Park. The resort offers a harmonious blend of luxury and nature, making it an ideal base for wildlife enthusiasts and travelers seeking relaxation. With its proximity to the park, guests can easily embark on thrilling safaris to witness Sri Lanka's diverse wildlife. The resort's tranquil ambiance, combined with its attentive service, ensures a memorable stay for all visitors.



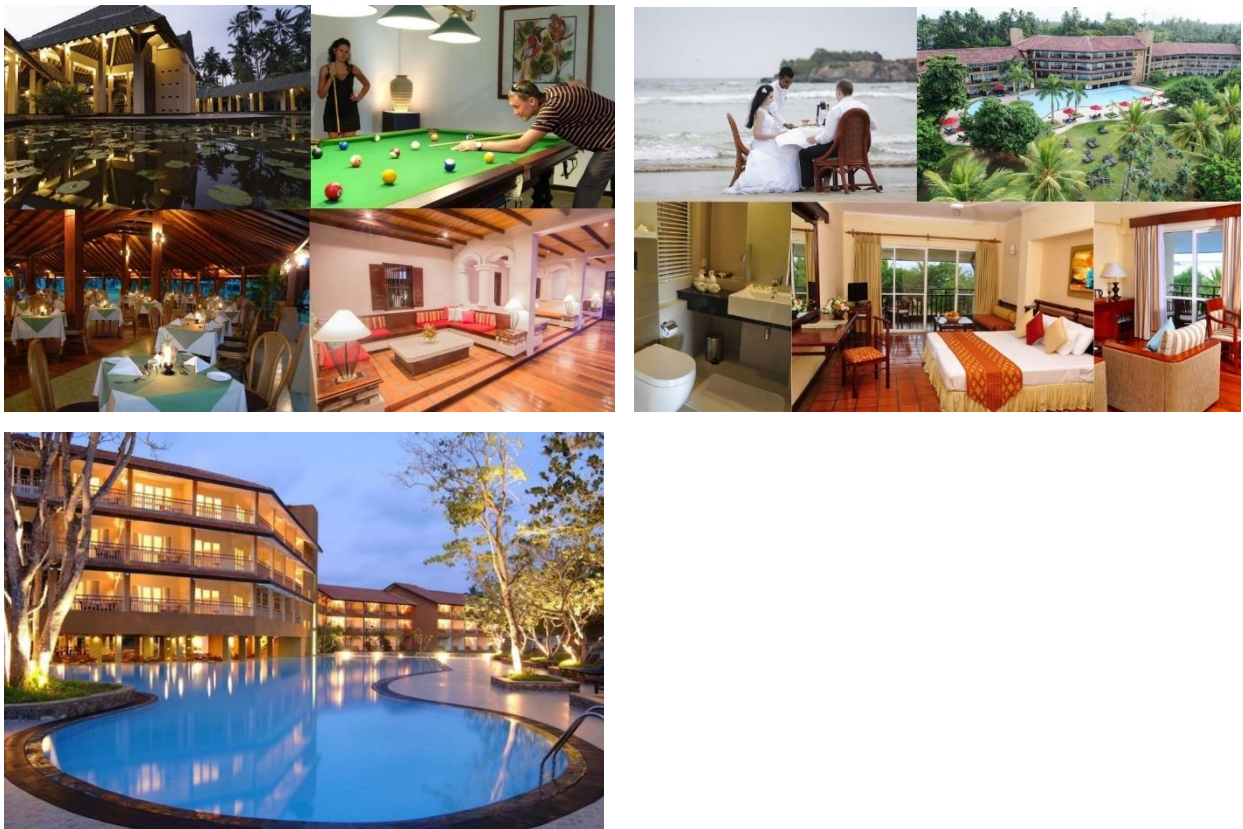
Star Rating: 4 Star

Amenities:

- 55 elegantly appointed rooms, including 20 Deluxe Rooms and 35 Deluxe Chalets
- Outdoor swimming pool surrounded by tropical gardens
- On-site restaurant serving local and international cuisine
- Bar/lounge area for relaxation
- Spa and wellness center offering various treatments
- Fitness center for health enthusiasts
- Free Wi-Fi throughout the property
- Air-conditioned rooms with private balconies or terraces
- 24-hour front desk and concierge services
- Room service and daily housekeeping
- Laundry and dry cleaning services
- Free private parking
- Airport shuttle service (additional charge)
- Proximity to Yala National Park and Kataragama Town.

Day 14-15:- Bentota – The Palms (Or Similar)

The Palms is a 4-star beachfront resort located in the coastal town of Beruwala, just a short drive from Bentota. Set against the backdrop of the Indian Ocean, the hotel offers a tropical paradise with lush gardens and direct beach access. Guests can enjoy a blend of relaxation and adventure, with opportunities to explore nearby attractions or unwind by the pool. The resort's warm hospitality and range of amenities make it a popular choice for travelers seeking a serene coastal getaway.



Star Rating: 4 Star

Amenities:

- Outdoor swimming pool
- Private beach access
- Spa and wellness center
- Fitness center
- On-site restaurant and bar
- Free Wi-Fi throughout the property
- Air-conditioned rooms with sea views
- 24-hour front desk and concierge services
- Room service and daily housekeeping
- Laundry and dry cleaning services
- Free private parking
- Airport shuttle service (additional charge)
- Proximity to Bentota Beach and local attractions

INCLUDED EXCURSIONS FOR THE TOUR

<ul style="list-style-type: none"> • Arrival in Colombo • Beachside relaxation • Jeep Safari at Wilpattu National Park • Anuradhapura city tour • Visit Sri Maha Bodhi • Visit Isurumuniya Temple • Visit Mihintale Ancient City • Leisure time at hotel in Jaffna • Boat ride to Nagadeepa Temple • Jaffna city tour (Library, Fort, Nallur Temple) • Whale and dolphin watching • Optional snorkeling or diving in Nilaveli • Evening relaxation in Habarana • Minneriya Wildlife Safari • Climb of Sigiriya Rock Fortress • Sigiriya village tour • Cooking demonstration • Catamaran boat ride on Hiriwadunna Lake 	<ul style="list-style-type: none"> • Visit Dambulla Cave Temple • Visit Ayurvedic Village and Spice Garden • Tea plantation and factory tour • Visit Nuwara Eliya • Scenic train ride from Nanu Oya to Ella • Hike Little Adam's Peak • Visit Nine Arch Bridge • Visit Buduruwagala Temple • Pottery demonstration • Optional Udawalawe Safari • Visit Elephant Transit Home • Explore Galle Dutch Fort and City • Madu River boat safari • Visit Kosgoda Sea Turtle Conservation Center • Departure from Colombo
--	--

OPTIONAL:

Elephant jeep safari at Udawalawa national park

