



UNWAIL SRI LANKA
Bespoke tour for 14 days, 13 nights



At **Azure Island Tours**, we're dedicated to creating exceptional travel experiences that cater to your individual needs. Our team of travel experts takes the time to understand your preferences, ensuring every trip is unique, personalized, and hassle-free. Whether you're after adventure, relaxation, or cultural immersion, we design every detail with you in


BOOK NOW

DAY 01:

NEGAMBO / WAIKKALA

> **TIME & ROUTE:** COLOMBO AIRPORT → TRANSFER TO NEGAMBO

> **ACTIVITIES:**

- WELCOME BY OUR REPRESENTATIVE AT SRI LANKA, BANDARANAIKE INTERNATIONAL AIRPORT
- YOU WILL BE TRANSFERRED TO YOUR HOTEL IN NEGAMBO
- CHECK IN AT HOTEL AND RELAX



> **OVERNIGHT STAY:** PLEDGE SCAP, NEGAMBO OR SIMILAR

> **TOUR HIGHLIGHTS:** WARM WELCOME, BEACHSIDE RELAXATION, AND REST AFTER YOUR FLIGHT.

DAY 02 :

HABARANA

> **TIME & ROUTE:** NEGAMBO → TRANSFER TO JAFFNA (APPROX. 3-4 HOURS)

> **ACTIVITIES:**

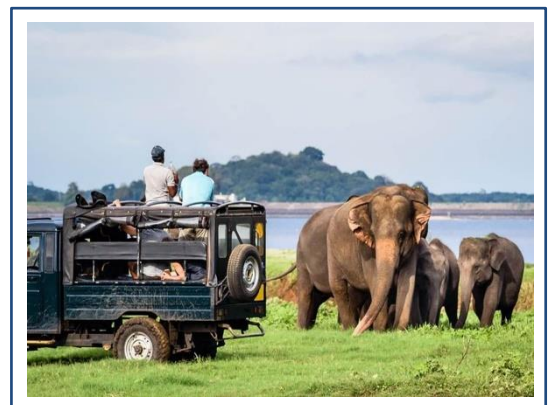
- AFTER THE BREAKFAST CHECK OUT AND TRANSFER TO HABARANA
- EVENING RELAX AT HOTEL.
- YOU CAN CHOOSE TO ENJOY MINNERIYA WILDLIFE SAFARI AS OPTIONAL.

> **OVERNIGHT STAY:** CAMELIA RESORT & SPA, SEEGIRIYA OR SIMILAR

> **TOUR HIGHLIGHTS:** SAFARI OPTIONS, WILDERNESS, AND RELAXATION

OPTIONAL:

- Jeep safari to Minneriya national park.
- These national parks in Habarana are the best places in the country to see the wild elephants.
- Which are often present in huge no of elephants.



DAY 03:

EXCURSION TO POLONNARUWA

> **TIME & ROUTE:** HABARANA → POLONNARUWA (APPROX. 1.5 - 2 HOURS EACH WAY)

> **ACTIVITIES:**

- AFTER THE BREAKFAST CHECK OUT AND TRANSFER TO POLONNARUWA
- EXPLORE POLONNARUWA ANCIENT CITY
- VISIT TEMPLES, TOMBS, STUPAS, AND ROYAL GARDENS

> **OVERNIGHT STAY:** CAMELIA RESORT & SPA, SEEGIRIYA OR SIMILAR

> **TOUR HIGHLIGHTS:** UNESCO WORLD HERITAGE SITE, 12TH-CENTURY RUINS, HISTORIC EXPLORATION

POLONNARUWA

- Polonnaruwa Was the second capital of Sri Lanka. After the destruction of Anuradhapura in 993. It comprises besides the Brahmanic monuments built by Cholas, the monuments ruins of the fabulous garden city created by Parakramabahu I in the 12th century.



- The glories of that age can be found in the archaeological treasures that still give a pretty good idea of how the city looked in its heyday. You'll find with hundreds of ancient structures – tombs and temples, statues and stupas – in a compact core. The Quadrangle alone is worth the trip.

DAY 04:

DAY TRIP TO SIGIRIYA

- > **TIME & ROUTE:** HABARANA → SEEGIRIYA (APPROX. 20 MINUTES)
- > **ACTIVITIES:**
 - CLIMB SIGIRIYA LION ROCK FORTRESS
 - SIGIRIYA VILLAGE TOUR WITH COOKING DEMO
 - CATAMARAN BOAT TOUR AT HIRIWADUNNA LAKE
- > **OVERNIGHT STAY:** CAMELIA RESORT & SPA, SEEGIRIYA OR SIMILAR
- > **TOUR HIGHLIGHTS:** UNESCO HERITAGE SITE, LOCAL EXPERIENCES, AND SCENIC CHARM

SEEGIRIYA ROCK

- The King Kasyapa (477-495 AD), who chose this site as his new capital built an impressive palace right on top of the rock column, accessible only through the mouth of an enormous carved lion.
- A popular tourist destination Sigiriya is also renowned for its ancient paintings (frescos) which are reminiscent of the Ajantha caves of India. It is one of the sevens world heritage site of Sri Lanka. It is also declared by UNESCO as the 8th wonder of the world.



> SIGIRIYA VILLAGE TOUR + COOKING DEMONSTRATION

> CATAMARAN BOAT TOUR OF HIRIWADUNNA LAKE

- There after proceed to experience the Sigiriya village track and cooking



DAY 05:

KANDY

> **TIME & ROUTE:** SEE GIRIYA → TRANSFER TO KANDY — (APPROX. 2.5 HOURS)

> **ACTIVITIES:**

- AFTER BREAKFAST CHECK OUT FROM THE HOTEL AND TRANSFER TO KANDY.
- VISIT DAMBULLA CAVE TEMPLE
- EXPLORE AYURVEDIC VILLAGE AND SPICE GARDEN

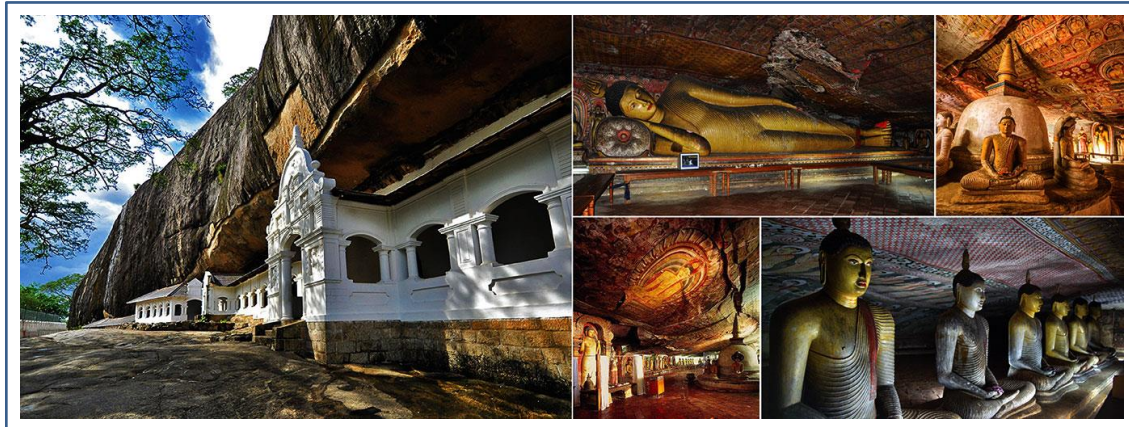
> **OVERNIGHT STAY:** ROYAL KANDYAN, KANDY OR SIMILAR

> **TOUR HIGHLIGHTS:** BUDDHIST HERITAGE, NATURAL HEALING, SCENIC TRANSITION TO KANDY

DAMBULLA CAVE TEMPLE

- Dambulla is the largest and best-preserved cave temple complex in Sri Lanka. The rock towers 160 m over the surrounding plains.

- there are more than 80 documented caves in the surrounding area. Major attractions are spread over five caves, which contain statues and paintings. These paintings and statues are related to Gautama Buddha and his life. There are a total of 153 buddha statues



AYURVEDIC VILLEGE

- From enhancing culinary delights to serving as key components in traditional medicine, spices have played a pivotal role in shaping the island's identity and fostering cross-cultural exchanges.

DAY 06:

KANDY SIGHTSEEING

> **TIME & ROUTE:** KANDY CITY AND SURROUNDINGS

> **ACTIVITIES:**

- VISIT TEMPLE OF THE SACRED TOOTH RELIC
- OPTIONAL: ROYAL BOTANICAL GARDENS PERADENIYA
- EVENING ENJOY KANDYAN CULTURAL SHOW
- KANDY CITY TOUR

> **OVERNIGHT STAY:** ROYAL KANDYAN, KANDY OR SIMILAR

> **TOUR HIGHLIGHTS:** BUDDHIST SPIRITUALITY, GARDEN BEAUTY, CULTURAL PERFORMANCES

> AFTER BREAKFAST PROCEED TO CITY TOUR AND SHOPPING TOUR

THE TEMPLE OF TOOTH

- Temple of the sacred tooth relic, is a Buddhist temple in Kandy, Sri Lanka. It is located in the royal palace complex of the former kingdom of Kandy, which houses the relic of the tooth of the buddha.



OPTIONAL: ROYAL BOTANICAL GARDEN -PERADENIYA



- The royal botanic gardens at Peradeniya was established in 1821, six years after the final occupation of the Kandyan kingdom by the English
- The area 61.25 ha in extent, is about 1550ft from sea level. More than 4000 species of plants including woody trees, palms, ferns, orchids and shrubs currently present within the gardens

> LATER EVENING; CULTURAL SHOW IN KANDY

- The show lasts almost an hour as there are several different dancers performed.
- It is nice to know that show performance is an example of what is really happening in Sri Lankan culture to day.



> RETURN TO THE HOTEL, GET THE DINNER AND OVER NIGHT STAY AT THE ROYAL KANDYAN HOTEL IN KADY.

DAY 07:

SCENIC TRAIN RIDE TO ELLA

- > **TIME & ROUTE:** KANDY → TRANSFER TO ELLA — APPROX. 6 HOURS (INCLUDING TRAIN RIDE)
- > **ACTIVITIES:**
 - BREAKFAST AT THE HOTEL EARLY MORNING
 - CHECK OUT FROM KANDY AND PROCEED TO ELLA VIA NUWARA ELIYA
SCENIC TRAIN RIDE FROM NANU OYA TO ELLA
 - VISIT TEA PLANTATION AND FACTORY.
- > **OVERNIGHT STAY:** MORNING DEW, ELLA OR SIMILAR
- > **TOUR HIGHLIGHTS:** HILL COUNTRY CHARM, TEA TRAILS, AND ICONIC TRAIN JOURNEY



TEA PLANTATION AND FACTORY VISIT

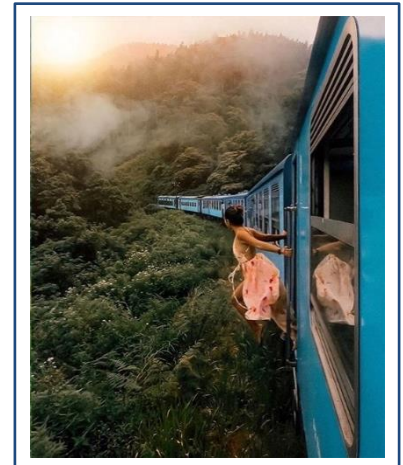


- Ceylon tea was noted as one of the country's foremost export crops earning an annual revenue in excess of us \$1 billion, with the introduction of an abundance of highly innovative, value-added products over the past decade or so.
- Ceylon tea now enjoys an enviable international reputation. A product that began as a diversification experiment in 1867 spanning just 19 acres of land in Kandy had expanded its cultivation to six principal regions within the country.
- Sri Lanka is an island made for tea. Tea is produced throughout the year and the total tea production is around 340 million kg per year. Sri Lanka's tea growing areas are mainly concentrated in the central highlands and the southern interior of the island.



ENJOY A TRAIN RIDE FROM NANUOYA TO ELLA

- Sri Lanka's most scenic train ride is one of the best in the world. Sri Lanka's Colombo to Badulla train ride deserves a place on your bucket list, and these three scenic stops along the route prove why. The train ride from Colombo to Badulla will awaken all your senses



- > YOUR GUIDE WILL PICK YOU UP FROM THE STATION THERE AFTER CONTINUE THE JOURNEY TO HOTEL.
- > CHECK IN THE HOTEL AND RELAX.

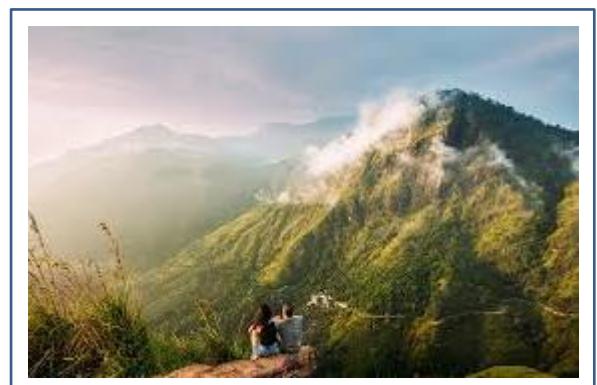
DAY 08:

ELLA EXPLORATION

> **TIME & ROUTE:** ELLA EXCURSIONS

> **ACTIVITIES:**

- HIKE LITTLE ADAM'S PEAK
- VISIT NINE ARCH BRIDGE
- RAWANA WATERFALL



> **OVERNIGHT STAY:** MORNING DEW, ELLA OR SIMILAR

> **TOUR HIGHLIGHTS:** NATURE HIKES, INSTAGRAMMABLE BRIDGES, AND MOUNTAIN AIR

LITTLE ADOM'S PEAK

- The hike to the top of Little Adam's Peak is fairly easy; the peak is 1141m high, so it is more of a two-hour-long leisurely walk.

NINE ARCH BRIDGE

- The bridge was designed to accommodate a challenging nine-degree curve and steep gradient. Built entirely by local labor under British supervision, the construction faced significant logistical challenges, including difficult terrain and material transport.



DAY 09 :

TISSAMAHARAMAYA / YALA

> **TIME & ROUTE:** ELLA → TRANSFER TO YALA — APPROX. 3 HOURS

> **ACTIVITIES:**

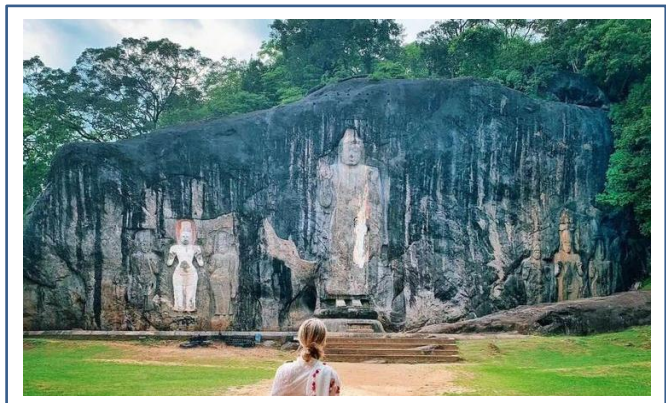
- VISIT BUDURUWAGALA TEMPLE
- POTTERY DEMONSTRATION
- SAFARI AT YALA NATIONAL PARK

> **OVERNIGHT STAY:** CHAARYA RESORT & SPA, YALA OR SIMILAR

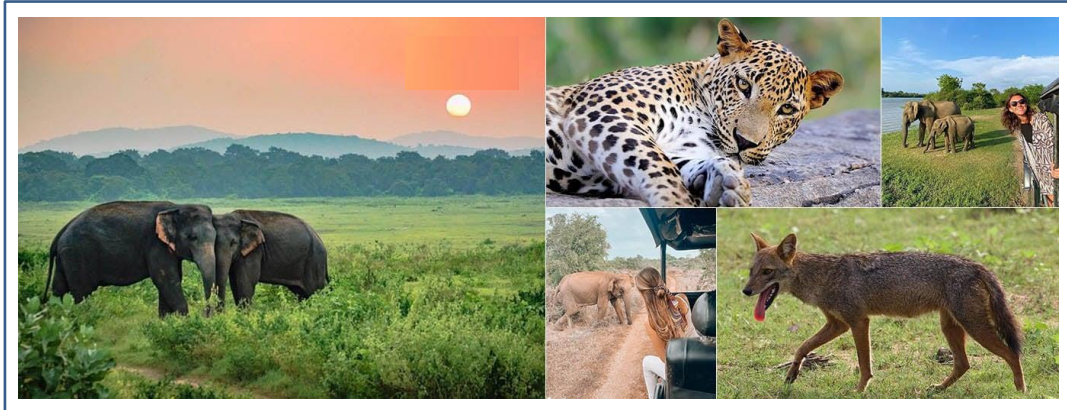
TOUR HIGHLIGHTS: SACRED ART, LOCAL CRAFT, AND SAFARI OPTIONS

BUDURUWAGALA TEMPLE

- Buduruvagala, apply named "The Rock of Buddhist Sculptures," stands as a timeless testament to Sri Lanka's rich cultural and religious heritage.
- At the heart of Buduruvagala lies its most striking feature: the towering standing Buddha statue, reaching an impressive 15 meters in height.
- Buduruvagala stands as a timeless sanctuary of spiritual devotion and artistic mastery. With its majestic Buddha figures, mysterious oil lamp, and rich tapestry of legends, Buduruvagala continues to captivate hearts and minds.



YALA NATIONAL PARK JEEP SAFARI



- Yala National Park is a huge area of forest, grassland and lagoons bordering the Indian Ocean, in southeast Sri Lanka.
- It's home to wildlife such as leopards, elephants and crocodiles, as well as hundreds of bird species
- This is leopard country, and they are the Lords of the Jungle! With a leopard density that's higher than anywhere else on this planet.

DAY 10:

BEACH

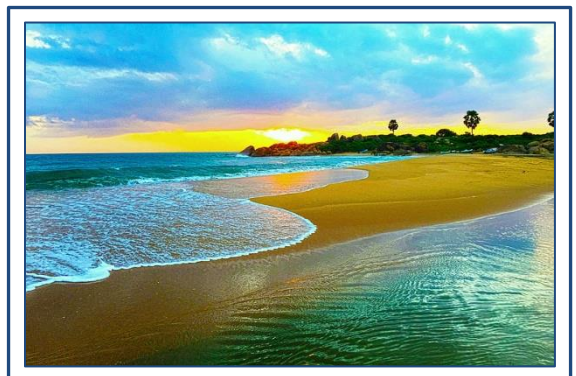
> **TIME & ROUTE:** YALA → GALLE VIA ELEPHANT TRANSIT HOME (APPROX. 4-5 HOURS)

> **ACTIVITIES:**

- VISIT ELEPHANT TRANSIT HOME
- EXPLORE GALLE DUTCH FORT & CITY
- VISIT SEA TURTLE CONSERVATION CENTER

> **OVERNIGHT STAY:** THE PALMS, BENTOTA OR SIMILAR

> **TOUR HIGHLIGHTS:** ELEPHANT CONSERVATION, COLONIAL CITY CHARM, COASTAL VIBE



ELEPHANT TRANSIT HOME

- The complex is a halfway house for orphaned elephants. After rehabilitation, the elephants are released back into the wild, many into Udawala National Park.
- Even if you don't get to get up close with the elephants, it's still fun to see them at feeding time from a viewing platform



elephant Transit Home (Open During in Feeding time 10.30am / 2.30pm / 6.00pm)

END ROUTE VISIT GALL FORT

Old town of Galle and its fortifications:

- Founded in the 16th century by the Portuguese, Galle reached the height of its development in the 18th century, before the arrival of the British.

It is the best example of a fortified city built by Europeans in South and South-East Asia,

showing the interaction between European architectural styles and South Asian traditions.



SEA TURTLES CONSERVATION CENTER:

- Presently there are five species of Turtles that are taken care of in the hatchery and rescue centre. Such species are the Olive Ridley turtles, Leatherback Turtles, Loggerheads Turtles, Hawksbill Turtles, and Green Turtles.
- The facilities of the sea turtle hatchery and rescue Centre are all state of the art, complete with water tanks to care new born Turtles along with adult Turtle species that have been rescued from the sea due to injuries.



DAY 11-13:

ENJOY THE SOUTHERN COAST

- > **TIME & ROUTE:** LOCAL EXCURSIONS
- > **ACTIVITIES:**
 - RELAX AND ENJOY BEACH FACILITIES
 - OPTIONAL WATER SPORTS OR EXCURSIONS
- > **OVERNIGHT STAY:** THE PALMS, BENTOTA OR SIMILAR
- > **TOUR HIGHLIGHTS:** RELAXATION, OCEAN VIEWS, TROPICAL LEISURE



From snorkeling and paddleboarding through calm lagoons to swimming with turtles, day one is packed with adventure. On day two, thrill-seekers can enjoy whale watching in Mirissa, surfing in Weligama, and fun rides like jet skiing and banana boating. The experience wraps up beautifully with a relaxing sunset catamaran cruise along the coast.

DAY 14

DEPARTURE

- > CHECK OUT AND TRANSFER TO BANDARANAYAKE INTERNATIONAL AIRPORT
- > CATCH YOUR FLIGHT BACK HOME WITH ALL THE HAPPY MEMORIES OF THE BEAUTIFUL COUNTRY SRI LANKA
- > NOTE - TRAVEL ITINERARY WILL DEPEND ON YOUR FLIGHT ARRIVAL AND DEPARTURE TIME
- > LATE CHECK –OUT SUBJECTED ON AVAILABILITY



CRAFT YOUR OWN JOURNEY WITH NO EXTRA COST.

 Visit: www.azureislandtours.co.uk

 Email: office@azureislandtours.co.uk

 Call us: +44 7925 073959

TOUR HIGHLIGHTS

Day 1: Arrival in Sri Lanka and relaxation in Negombo.

Day 2: Travel to Habarana with optional elephant safari at Minneriya or Kaudulla.

Day 3: Explore the ancient ruins of Polonnaruwa.

Day 4: Visit Sigiriya Lion Rock and enjoy a traditional village tour with catamaran ride.

Day 5: Discover Dambulla Cave Temple and explore an Ayurvedic spice village.

Day 6: Visit the Temple of the Tooth and enjoy a cultural show in Kandy.

Day 7: Scenic train ride from Nanu Oya to Ella via Nuwara Eliya and tea plantations.

Day 8: Hike Little Adam's Peak and visit the iconic Nine Arch Bridge in Ella.

Day 9: Visit Buduruwagala Temple, experience pottery making, and enjoy a Yala safari.

Day 10: Visit Elephant Transit Home, Galle Fort, and Sea Turtle Conservation Centre.

Day 11: Relax at the southern beach with leisure time.

Day 12: Enjoy a free day at the beach or optional water activities.

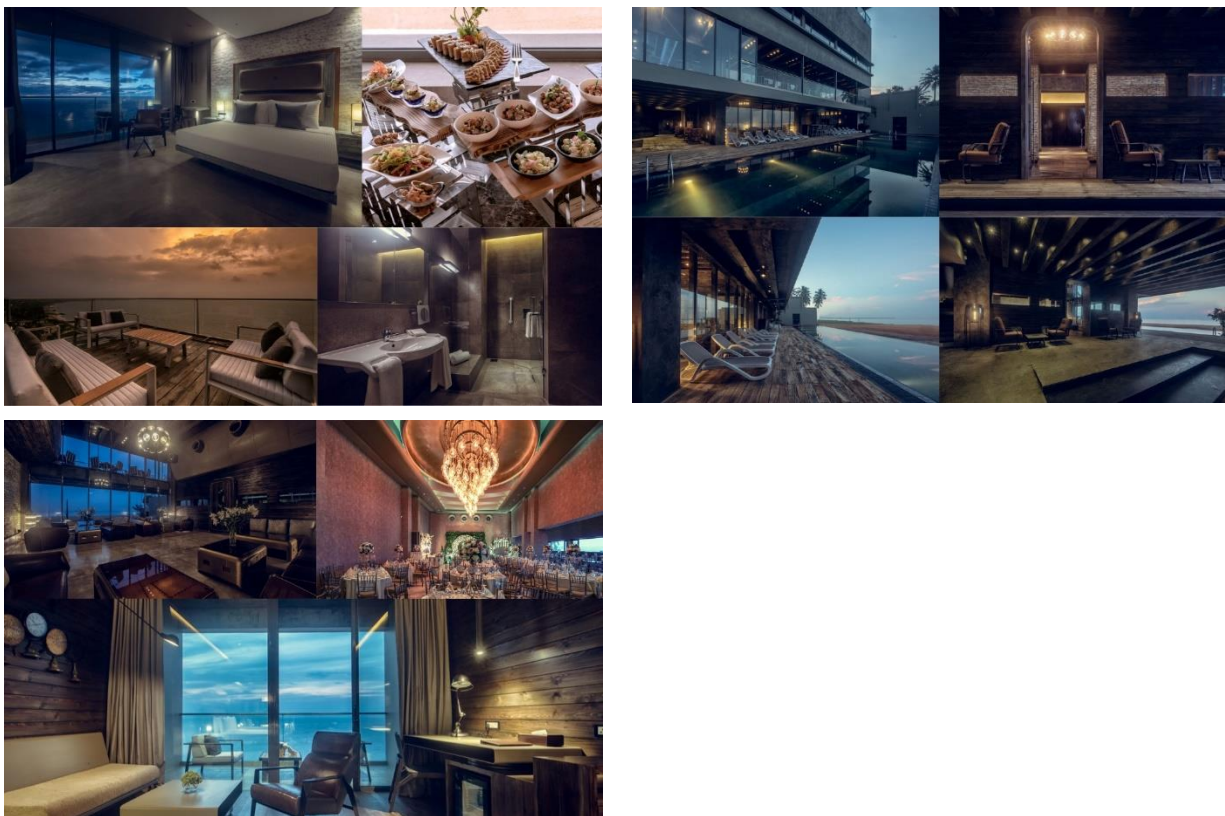
Day 13: Unwind on your final beach day in paradise.

Day 14: Departure from Sri Lanka with beautiful memories.

HOTEL DETAILS

Day 1: Negambo – Pledge Scape (Or Similar)

Pledge Scape is a luxurious 5-star beachfront hotel located in the coastal city of Negombo, Sri Lanka. Situated just 12 km from Bandaranaike International Airport, it offers guests a serene escape with stunning ocean views and modern amenities. The hotel features 32 elegantly designed rooms, including deluxe and premium options, each equipped with private balconies, spacious bathrooms, and contemporary furnishings. Guests can indulge in a variety of dining experiences at the on-site restaurant, Le Port, which serves a fusion of local and international cuisines. With facilities like an outdoor infinity pool, rooftop gym, and direct beach access.



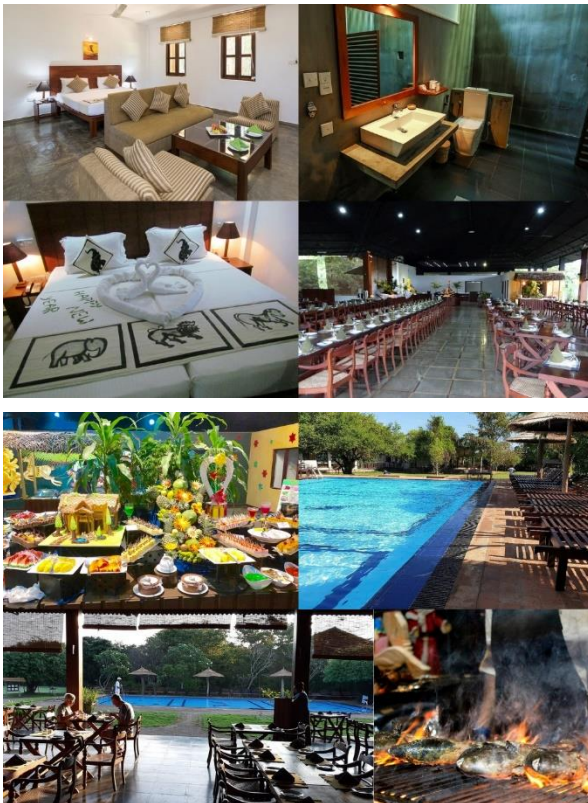
Star Rating: 5 Star

Amenities:

- Outdoor infinity swimming pool
- Rooftop gymnasium
- Beachfront access
- Le Port restaurant offering local and international cuisine
- SkyDeck rooftop bar
- Old Salt bar
- 24-hour front desk service
- Free Wi-Fi throughout the property
- Complimentary airport shuttle service
- Free on-site parking
- Daily housekeeping and laundry services
- In-room tea/coffee makers
- Private balconies with sea views
- Banquet and conference facilities accommodating up to 350 guests
- Accessibility features for disabled guests
- Concierge and tour desk services
- Safety deposit boxes in rooms
- Air conditioning in all rooms
- Flat-screen TVs with satellite channels

Day 2-4: Sigiriya – Camellia Resort & Spa (Or Similar)

Camellia Resort and Spa is a tranquil 4-star retreat nestled in the lush greenery of Audangawa, just a 15-minute drive from the iconic Sigiriya Rock Fortress. The resort offers a serene escape for travelers seeking relaxation and rejuvenation amidst nature. Guests can enjoy well-appointed cottages with private balconies, indulge in spa treatments, and savor local and international cuisine at the on-site restaurant. With its proximity to cultural landmarks and natural attractions, Camellia Resort and Spa provides an ideal base for exploring the rich heritage of the region.



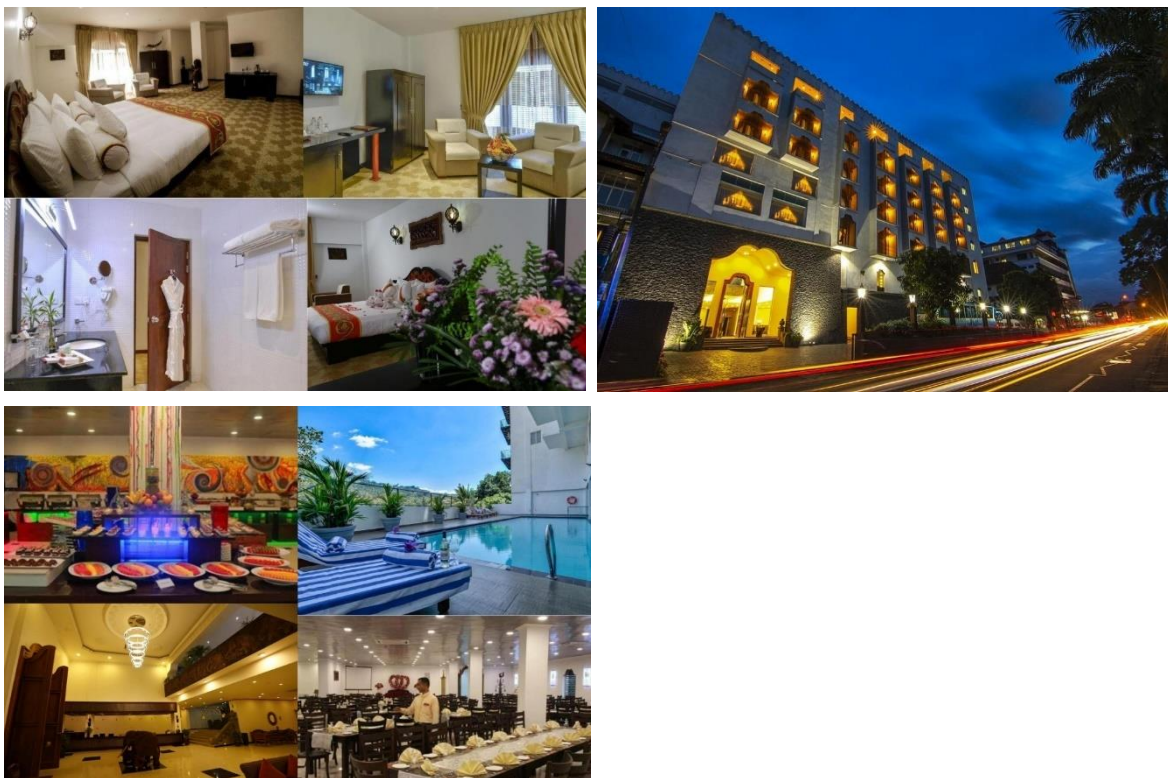
Star Rating: 4 Star

Amenities:

- Outdoor swimming pool
- Spa and wellness center with sauna and massage services
- On-site restaurant and bar
- Free Wi-Fi throughout the property
- Air-conditioned rooms with satellite TV and minibar
- Private balconies with garden or pool views
- 24-hour front desk and concierge services
- Laundry and dry cleaning services
- Free private parking
- Proximity to Sigiriya Rock Fortress and Minneriya National Park

Day 5-6: Kandy – Royal Kandyan (Or Similar)

Royal Kandyan is a contemporary 4-star hotel situated on Peradeniya Road, just a short drive from Kandy's central attractions. Its strategic location offers easy access to notable landmarks such as the Temple of the Tooth Relic and the Royal Botanical Gardens. The hotel features 55 elegantly designed rooms that blend traditional Sri Lankan aesthetics with modern comforts. Guests can enjoy panoramic views of the surrounding hills, indulge in local and international cuisine at the on-site restaurant, and unwind with various leisure facilities. Royal Kandyan provides a serene retreat for travelers exploring the cultural heritage of Kandy.



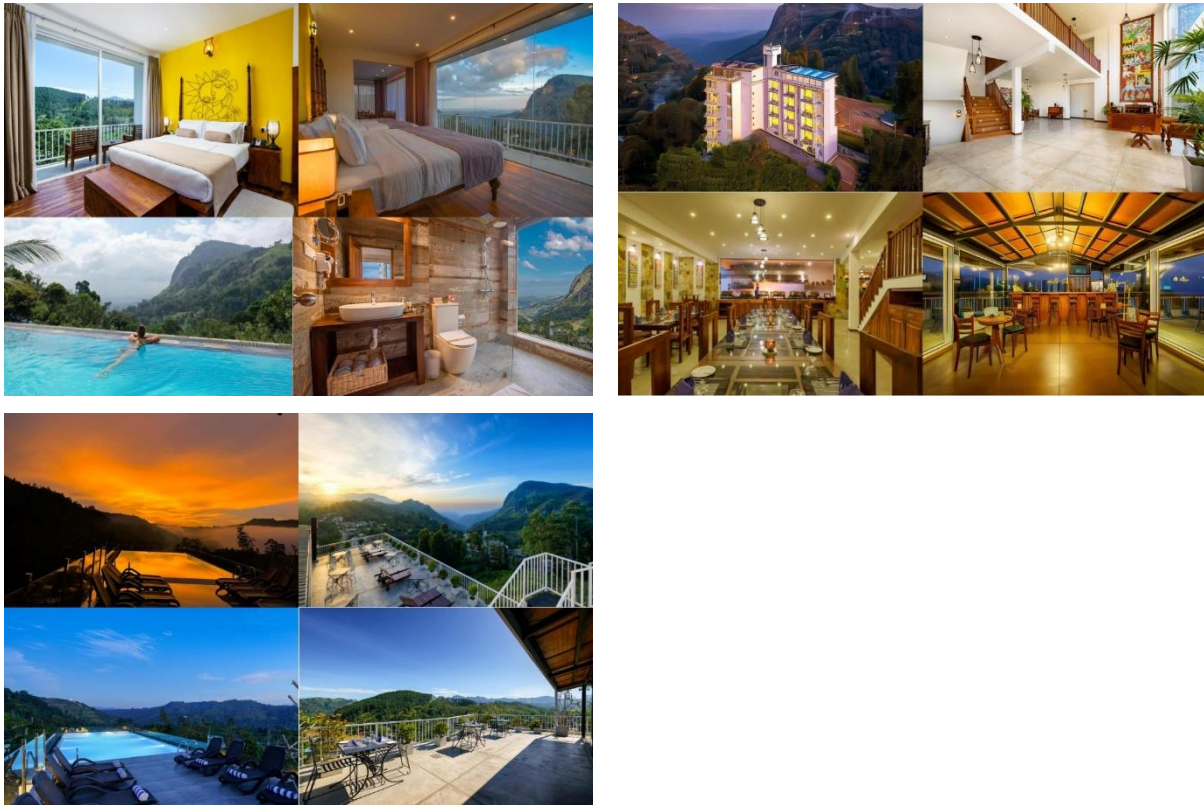
Star Rating: 4 Star

Amenities:

- Outdoor swimming pool
- Spa and wellness center offering massages and treatments
- Fully equipped fitness center
- On-site restaurant serving local and international dishes
- Bar/lounge area
- Complimentary Wi-Fi throughout the property
- Air-conditioned rooms with flat-screen TVs, minibars, and in-room safes
- 24-hour front desk and concierge services
- Room service and daily housekeeping
- Laundry and dry cleaning services
- Free private parking
- Airport shuttle service (additional charge)
- Business center and meeting facilities
- Gift shop and currency exchange
- Accessibility features for disabled guests

Day 7-8: Ella – Morning Dew (Or Similar)

Nestled amidst the lush green hills of Ella, Morning Dew Boutique Hotel offers a serene retreat with panoramic views of the surrounding landscapes. Established in 2017, the hotel combines contemporary design with traditional Sri Lankan hospitality, providing guests with a tranquil escape. Its prime location places it just 4.3 km from the iconic Demodara Nine Arch Bridge and within walking distance of Ella Railway Station, making it an ideal base for exploring the region's natural beauty and cultural landmarks.



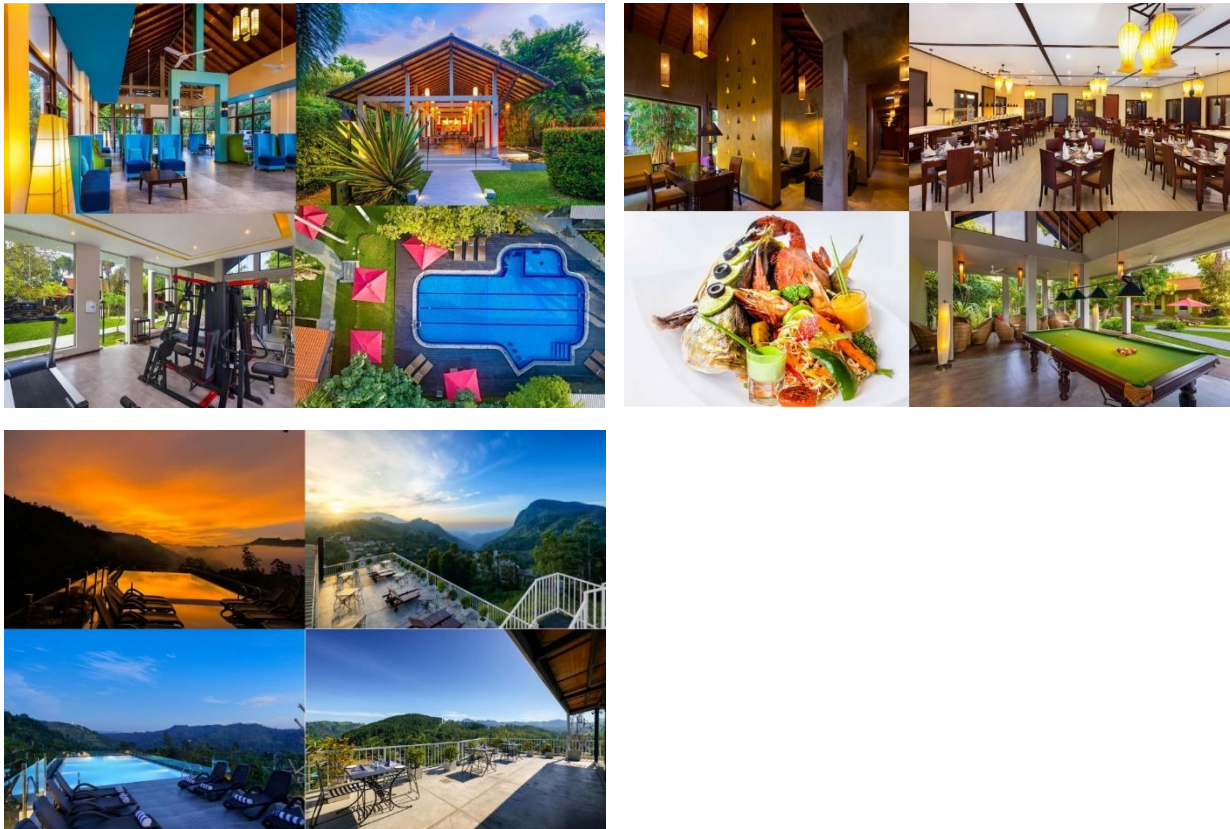
Star Rating: 4 Star

Amenities:

- Rooftop infinity swimming pool with panoramic views
- Spa and wellness center
- On-site restaurant and bar
- Outdoor fireplace and sun terrace
- Free Wi-Fi throughout the property
- Air-conditioned rooms with private balconies
- Family rooms and shared kitchen facilities
- 24-hour front desk and concierge services
- Room service and daily housekeeping
- Free private parking
- Airport shuttle service (additional charge)
- Proximity to Ella Rock, Little Adam's Peak, and Ella Spice Garden

Day 9: Yala – Chaarya Resort & Spa (Or Similar)

Chaarya Resort & Spa is a serene 4-star retreat nestled in the lush landscapes of Tissamaharama, just a 30-minute drive from Yala National Park. The resort offers a harmonious blend of luxury and nature, making it an ideal base for wildlife enthusiasts and travelers seeking relaxation. With its proximity to the park, guests can easily embark on thrilling safaris to witness Sri Lanka's diverse wildlife. The resort's tranquil ambiance, combined with its attentive service, ensures a memorable stay for all visitors.



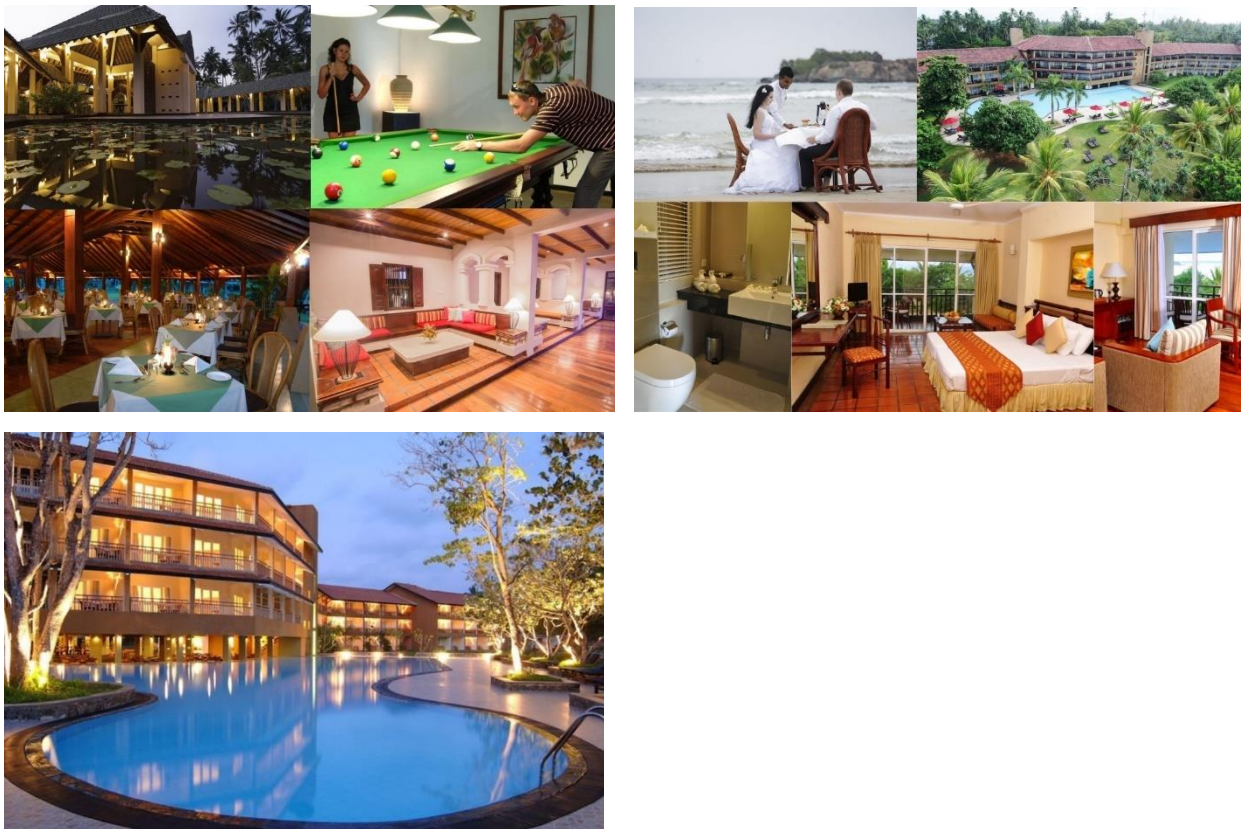
Star Rating: 4 Star

Amenities:

- 55 elegantly appointed rooms, including 20 Deluxe Rooms and 35 Deluxe Chalets
- Outdoor swimming pool surrounded by tropical gardens
- On-site restaurant serving local and international cuisine
- Bar/lounge area for relaxation
- Spa and wellness center offering various treatments
- Fitness center for health enthusiasts
- Free Wi-Fi throughout the property
- Air-conditioned rooms with private balconies or terraces
- 24-hour front desk and concierge services
- Room service and daily housekeeping
- Laundry and dry cleaning services
- Free private parking
- Airport shuttle service (additional charge)
- Proximity to Yala National Park and Kataragama Town.

Day 10-13:- Bentota – The Palms (Or Similar)

The Palms is a 4-star beachfront resort located in the coastal town of Beruwala, just a short drive from Bentota. Set against the backdrop of the Indian Ocean, the hotel offers a tropical paradise with lush gardens and direct beach access. Guests can enjoy a blend of relaxation and adventure, with opportunities to explore nearby attractions or unwind by the pool. The resort's warm hospitality and range of amenities make it a popular choice for travelers seeking a serene coastal getaway.



Star Rating: 4 Star

Amenities:

- Outdoor swimming pool
- Private beach access
- Spa and wellness center
- Fitness center
- On-site restaurant and bar
- Free Wi-Fi throughout the property
- Air-conditioned rooms with sea views
- 24-hour front desk and concierge services
- Room service and daily housekeeping
- Laundry and dry cleaning services
- Free private parking
- Airport shuttle service (additional charge)
- Proximity to Bentota Beach and local attractions

INCLUDED EXCURSIONS FOR THE TOUR

<ul style="list-style-type: none">• Arrival in Colombo• Beachside relaxation• Evening relaxation in Habarana• Optional Minneriya Wildlife Safari• Climb of Sigiriya Rock Fortress• Sigiriya village tour• Cooking demonstration• Catamaran boat ride on Hiriwadunna Lake• Visit Ayurvedic Village and Spice Garden• Temple of the Tooth Relic• Kandyan Cultural Dance• Optional Royal Botanical Garden• Tea plantation and factory tour	<ul style="list-style-type: none">• Visit Dambulla Cave Temple• Visit Nuwara Eliya• Scenic train ride to Ella• Hike Little Adam's Peak• Visit Nine Arch Bridge• Visit Buduruwagala Temple• Pottery demonstration• Yala National Park Safari• Visit Elephant Transit Home• Explore Galle Dutch Fort and City• Visit Kosgoda Sea Turtle Conservation Center• Departure from Colombo
---	--

OPTIONAL:

Elephant jeep safari Minneriya National Park

Royal Botanical Garden Peradeniya

