



## A MYTHICAL VOYAGE RAMAYANA WONDERS

### Bespoke Adventure Tour For 10 Days, 9 Nights



At **Azure Island Tours**, we're dedicated to creating exceptional travel experiences that cater to your individual needs. Our team of travel experts takes the time to understand your preferences, ensuring every trip is unique, personalized, and hassle-free. Whether you're after adventure, relaxation, or cultural immersion, we design every detail with you in mind.

  
**BOOK NOW**

## DAY 01:

### SACRED TEMPLES AND SPIRITUAL EXPLORATION



- > **TIME & ROUTE:** ARRIVAL AT BANDARANAIKE INTERNATIONAL AIRPORT → TRANSFER TO CHILAW VIA NEGOMBO
- > **ACTIVITIES:**
  - MEET & GREET AT COLOMBO AIRPORT BY AZURE ISLAND TOURS REPRESENTATIVE
  - TRANSFER TO AMAGI ARIA AIRPORT TRANSIT HOTEL FOR REST AND REFRESHMENT
  - VISIT DIVURUMPOLA TEMPLE, REVERED FOR SITA'S TRIAL BY FIRE
  - EXPLORE MUNNESWARAM TEMPLE, DEDICATED TO LORD SHIVA WITH RAMAYANA CONNECTIONS
  - VISIT MANAVARI TEMPLE, WHERE LORD RAMA INSTALLED THE FIRST LINGAM
  - CHECK-IN AND RELAX AT CAROLINA BEACH RESORT & SPA
- > **OVERNIGHT STAY:** CAROLINA BEACH RESORT & SPA, CHILAW ( OR SIMILAR 4★ ACCOMMODATION)



- > **TOUR HIGHLIGHTS:** A SPIRITUAL START STEEPED IN RAMAYANA LORE, VISITING ANCIENT TEMPLES TIED TO LORD RAMA AND SITA, COMPLEMENTED BY A SERENE BEACHFRONT RETREAT.



## DAY 02:

### ANURADHAPURA SPIRITUAL TOUR



- > **TIME & ROUTE:** CHILAW → ANURADHAPURA
- > **ACTIVITIES:**
- MEET & GREET AT COLOMBO AIRPORT BY AZURE ISLAND TOURS REPRESENTATIVE
  - VISIT JAYA SRI MAHA BODHI, ONE OF THE WORLD'S OLDEST LIVING TREES
  - EXPLORE RUWANWELISAYA, A GRAND BUDDHIST STUPA

- TOUR THUPARAMAYA, SRI LANKA'S FIRST STUPA
  - DISCOVER ABHAYAGIRI MONASTERY COMPLEX, A HISTORIC BUDDHIST SITE
  - VISIT TWIN PONDS AND ISURUMUNIYA VIHARA FOR THEIR SERENE CARVINGS
  - CHECK-IN AT KUBURA RESORT FOR A RESTFUL EVENING
- > **OVERNIGHT STAY:** KUBURA RESORT, ANURADHAPURA (OR SIMILAR 4★ ACCOMMODATION)
- > **TOUR HIGHLIGHT:** IMMERSE IN SRI LANKA'S BUDDHIST HERITAGE WITH VISITS TO ANCIENT SACRED SITES, OFFERING A BLEND OF SPIRITUALITY AND HISTORICAL WONDER.

### DAY 03:

#### DAY TRIP TO TRINCOMALEE

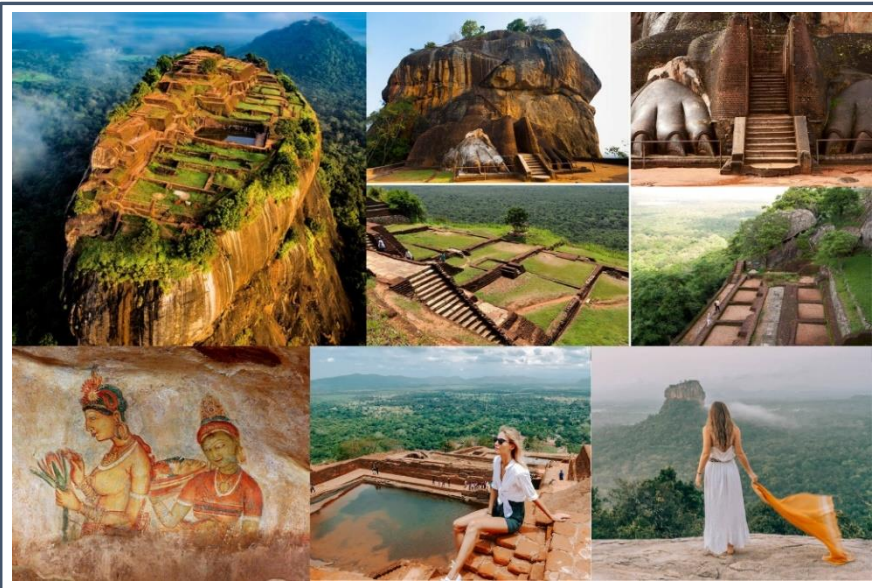


- > **TIME & ROUTE:** ANURADHAPURA → TRINCOMALEE
- > **ACTIVITIES:**
- MORNING AT KUBURA RESORT FOR A TRANQUIL START

- VISIT KONESWARAM TEMPLE, A CLIFF-TOP HINDU SHRINE WITH OCEAN VIEWS
  - EXPLORE LOVERS' LEAP, A SCENIC CLIFF WITH A ROMANTIC BACKSTORY
  - RELAX AT UPPUVELI BEACH WITH ITS GOLDEN SANDS
  - VISIT KANNIYA HOT SPRINGS FOR NATURAL THERMAL WATERS
  - CHECK-IN AT NILAVELI BEACH HOTEL
- > **OVERNIGHT STAY:** NILAVELI BEACH HOTEL, TRINCOMALEE (4★ ACCOMMODATION)
- > **TOUR HIGHLIGHT:** A COASTAL ESCAPE COMBINING HINDU SPIRITUALITY, NATURAL BEAUTY, AND RELAXATION ALONG TRINCOMALEE'S PRISTINE SHORES.

## DAY 04:

### SEEGIRIYA EXPLRATION



- > **TIME & ROUTE:** TRINCOMALEE → SIGIRIYA
- > **ACTIVITIES:**
- CLIMB SIGIRIYA ROCK FORTRESS, A UNESCO WORLD HERITAGE SITE
  - HIKE PIDURANGALA ROCK FOR STUNNING PANORAMIC VIEWS
  - VISIT DAMBULLA CAVE TEMPLE, ADORNED WITH ANCIENT FRESCOES



- EXPLORE GOLDEN TEMPLE OF DAMBULLA, A BUDDHIST HERITAGE SITE
- CHECK-IN AT OAK RAY ELEPHANT LAKE
- > **OVERNIGHT STAY:** OAK RAY ELEPHANT LAKE, SIGIRIYA (OR 4★ SIMILAR ACCOMMODATION)
- > **TOUR HIGHLIGHT:** AN ADVENTURE THROUGH SRI LANKA'S CULTURAL TRIANGLE, BLENDING ANCIENT ENGINEERING MARVELS WITH BREATHTAKING NATURAL VISTAS.



## DAY 05:

### **POLONNARUWA SIGHTSEEING | SAFARI**



- > **TIME & ROUTE:** SIGIRIYA → POLONNARUWA → RETURN TO SIGIRIYA

> **ACTIVITIES:**

- EMBARK ON A MINNERIYA NATIONAL PARK SAFARI TO SPOT WILDLIFE
- TOUR POLONNARUWA'S ANCIENT CITY, A UNESCO WORLD HERITAGE SITE
- RETURN TO OAK RAY ELEPHANT LAKE FOR A RESTFUL EVENING

> **OVERNIGHT STAY:** OAK RAY ELEPHANT LAKE, SIGIRIYA (OR SIMILAR 4★ ACCOMMODATION)

MEALS: DINNER & BREAKFAST INCLUDED

> **TOUR HIGHLIGHT:** A THRILLING DAY OF WILDLIFE EXPLORATION AND HISTORICAL DISCOVERY IN THE ANCIENT RUINS of Polonnaruwa.

## DAY 06:

### TRANSFER TO ELLA



> **TIME & ROUTE:** SIGIRIYA → ELLA VIA KANDY

> **ACTIVITIES:**

- VISIT TEMPLE OF THE SACRED TOOTH RELIC IN KANDY
- EXPLORE SHREE BHAKTA HANUMAN KOYIL, LINKED TO RAMAYANA
- VISIT SEETHA AMMAN KOVIL, A TEMPLE TIED TO SITA'S CAPTIVITY
- STROLL THROUGH HAKGALA BOTANICAL GARDEN'S EXOTIC FLORA

- CHECK-IN AT LUXOR KIRINDI ELLA
- > **OVERNIGHT STAY:** LUXOR KIRINDI ELLA, ELLA (OR SIMILAR 4★ ACCOMMODATION)  
**MEALS:** DINNER & BREAKFAST INCLUDED
- > **TOUR HIGHLIGHT:** A JOURNEY THROUGH SACRED SITES AND LUSH GARDENS, CONNECTING TO RAMAYANA LEGENDS AND BUDDHIST REVERENCE.

## DAY 07:

### ELLA SIGHTSEEING TOUR



- > **TIME & ROUTE:** ELLA → LOCAL SIGHTSEEING → RETURN TO ELLA
- > **ACTIVITIES:**
  - VISIT NINE ARCH BRIDGE, AN ARCHITECTURAL GEM AMID HILLS
  - HIKE LITTLE ADAM'S PEAK FOR PANORAMIC VALLEY VIEWS
  - TREK TO ELLA ROCK VIEWPOINT FOR MISTY MOUNTAIN VISTAS
  - RETURN TO LUXOR KIRINDI ELLA FOR RELAXATION



- > **OVERNIGHT STAY:** LUXOR KIRINDI ELLA, ELLA (OR SIMILAR 4★ ACCOMMODATION)
- > **TOUR HIGHLIGHT:** A SCENIC ADVENTURE THROUGH ELLA'S ICONIC LANDSCAPES, OFFERING BREATHTAKING VIEWS AND TRANQUIL HIKING TRAILS.



## DAY 08:

### RAVANA ADAVIYA HISTORICAL EXPLORATION

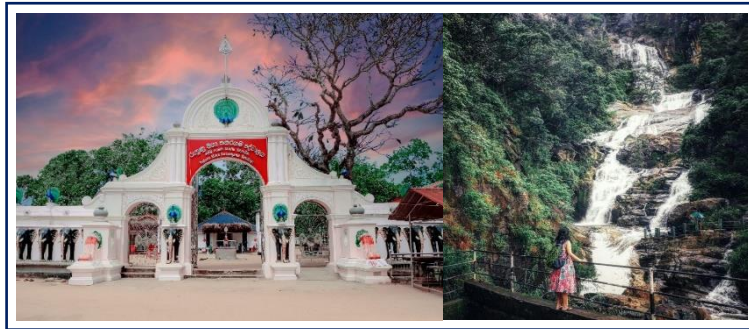


- > **TIME & ROUTE:** ELLA → RAVANA ADAVIYA → KATARAGAMA
- > **ACTIVITIES:**

- EXPLORE RAVANA CAVE, A RAMAYANA-LINKED HISTORICAL SITE
- VISIT RAVANA ELLA, A MAJESTIC WATERFALL TIED TO SITA'S LEGEND
- TOUR KATARAGAMA, A SACRED MULTI-RELIGIOUS PILGRIMAGE SITE

- CHECK-IN AT VILLA KALE

- > **OVERNIGHT STAY:** VILLA KALE, KATARAGAMA (OR SIMILAR 4★ ACCOMMODATION)
- > **TOUR HIGHLIGHT:** A MYSTICAL JOURNEY THROUGH RAMAYANA SITES, COMBINING NATURAL BEAUTY WITH SPIRITUAL SIGNIFICANCE.



## DAY 09:

### GALLE SIGHTSEEING TOUR



- > **TIME & ROUTE:** KATARAGAMA → GALLE
- > **ACTIVITIES:**
  - TOUR GALLE FORT, A UNESCO WORLD HERITAGE SITE
  - VISIT RUMASSALA HILL, LINKED TO RAMAYANA LORE



- RELAX AT JUNGLE BEACH
  - UNWIND AT UNAWATUNA BEACH
  - RETURN TO VILLA KALE
- > **OVERNIGHT STAY:** VILLA KALE, KATARAGAMA (OR SIMILAR 4★ ACCOMMODATION)
- > **TOUR HIGHLIGHT:** A COASTAL EXPLORATION OF COLONIAL HISTORY, MYTHOLOGICAL SITES, AND SERENE BEACHES IN GALLE'S VIBRANT SETTING.



## DAY 10:

### DEPARTURE



- > **TIME & ROUTE:** KATARAGAMA → BANDARANAIKE INTERNATIONAL AIRPORT



- > **ACTIVITIES:**
  - TRANSFER TO COLOMBO AIRPORT FOR DEPARTURE
  - FAREWELL ASSISTANCE BY AZURE ISLAND TOURS REPRESENTATIVE
- > **OVERNIGHT STAY:** NONE (DEPARTURE DAY)
- > **MEALS:** BREAKFAST INCLUDED
- > **TOUR HIGHLIGHT:** A FOND FAREWELL TO SRI LANKA, CONCLUDING A SPIRITUAL AND CULTURAL JOURNEY THROUGH ITS SACRED AND SCENIC WONDERS.



## TOUR HIGHLIGHTS

**Day 1:** Visit ancient Ramayana temples and relax at a beachfront resort in Chilaw.

**Day 2:** Explore sacred Buddhist sites in Anuradhapura.

**Day 3:** Discover Trincomalee's temples, beaches, and hot springs.

**Day 4:** Climb Sigiriya, hike Pidurangala, and visit Dambulla temples.

**Day 5:** Go on a Minneriya safari and explore Polonnaruwa ruins.

**Day 6:** Visit Kandy's Tooth Relic Temple and Ramayana sites en route to Ella.

**Day 7:** Hike Ella Rock, Little Adam's Peak, and see Nine Arch Bridge.

**Day 8:** Explore Ravana Falls, Ravana Cave, and spiritual Kataragama.

**Day 9:** Tour Galle Fort, Rumassala Hill, and relax on Unawatuna Beach.

**Day 10:** Depart with spiritual and scenic memories of Sri Lanka.



## HOTEL DETAILS

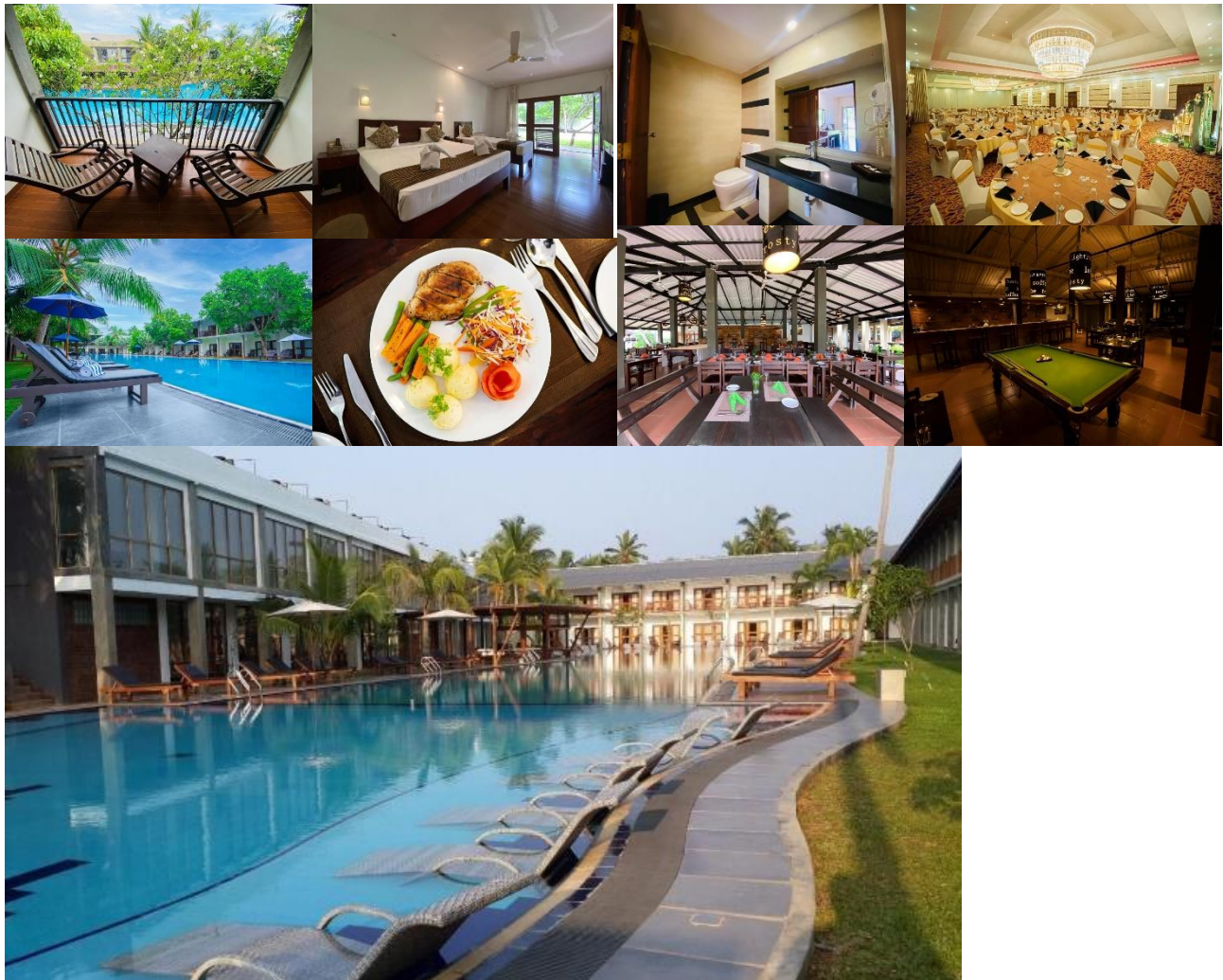
### Day 1: Carolina Beach Resort & Spa – Chilaw

**Carolina Beach Resort & Spa** is a serene beachfront property nestled along the western coast of Sri Lanka, ideal for travelers seeking relaxation and coastal charm. Surrounded by coconut palms and overlooking the Indian Ocean, the resort combines traditional hospitality with modern comfort, offering a rejuvenating start to your journey.

**Star Rating:** 4 Star

**Amenities:**

- Beachfront access
- Outdoor swimming pool
- Spa and wellness center
- Multi-cuisine restaurant
- Conference and banquet facilities
- Room service
- Complimentary Wi-Fi
- Kids' play area
- Water sports and beach activities





## Day 2: Kubura Resort – Anuradhapura

**Kubura Resort** offers a peaceful retreat close to the historic city of Anuradhapura. Set amidst landscaped gardens, the resort blends modern comfort with a touch of traditional Sri Lankan hospitality. It's a perfect base for exploring ancient ruins and sacred sites while enjoying a quiet, comfortable stay.

**Star Rating:** 3 Star

**Amenities:**

- Outdoor swimming pool
- Restaurant serving local and international cuisine
- Air-conditioned rooms with private balconies
- Bicycle rental
- Cultural and heritage tour arrangements
- Complimentary Wi-Fi
- Room service
- Lush garden surroundings





### Day 3: Nilaveli Beach Hotel – Trincomalee

**Nilaveli Beach Hotel** is a charming beachfront resort located on the pristine shores of Nilaveli, one of Sri Lanka's most celebrated beaches. With direct beach access and panoramic ocean views, the hotel provides a relaxing escape, especially ideal for beach lovers and snorkelers.

**Star Rating:** 3 Star

**Amenities:**

- Direct access to Nilaveli Beach
- Outdoor swimming pool
- Restaurant with sea view dining
- Water sports, including snorkeling and diving
- Excursions to Pigeon Island
- Bar and lounge
- Free Wi-Fi in public areas
- Laundry service



## Day 4-5: Oak Ray Elephant Lake – Sigiriya

**Oak Ray Elephant Lake** is a nature-inspired resort located near Sigiriya, offering a scenic getaway with views of lakes, mountains, and greenery. The property is ideal for visitors exploring the cultural triangle and nearby wildlife parks.

**Star Rating:** 3 Star

**Amenities:**

- Outdoor swimming pool
- On-site restaurant with Sri Lankan and Western cuisine
- Spacious, air-conditioned rooms with scenic views
- Nature trails and bird watching
- Cultural site visit arrangements (Sigiriya, Dambulla)
- Free Wi-Fi
- Conference facilities
- Ayurvedic treatments available





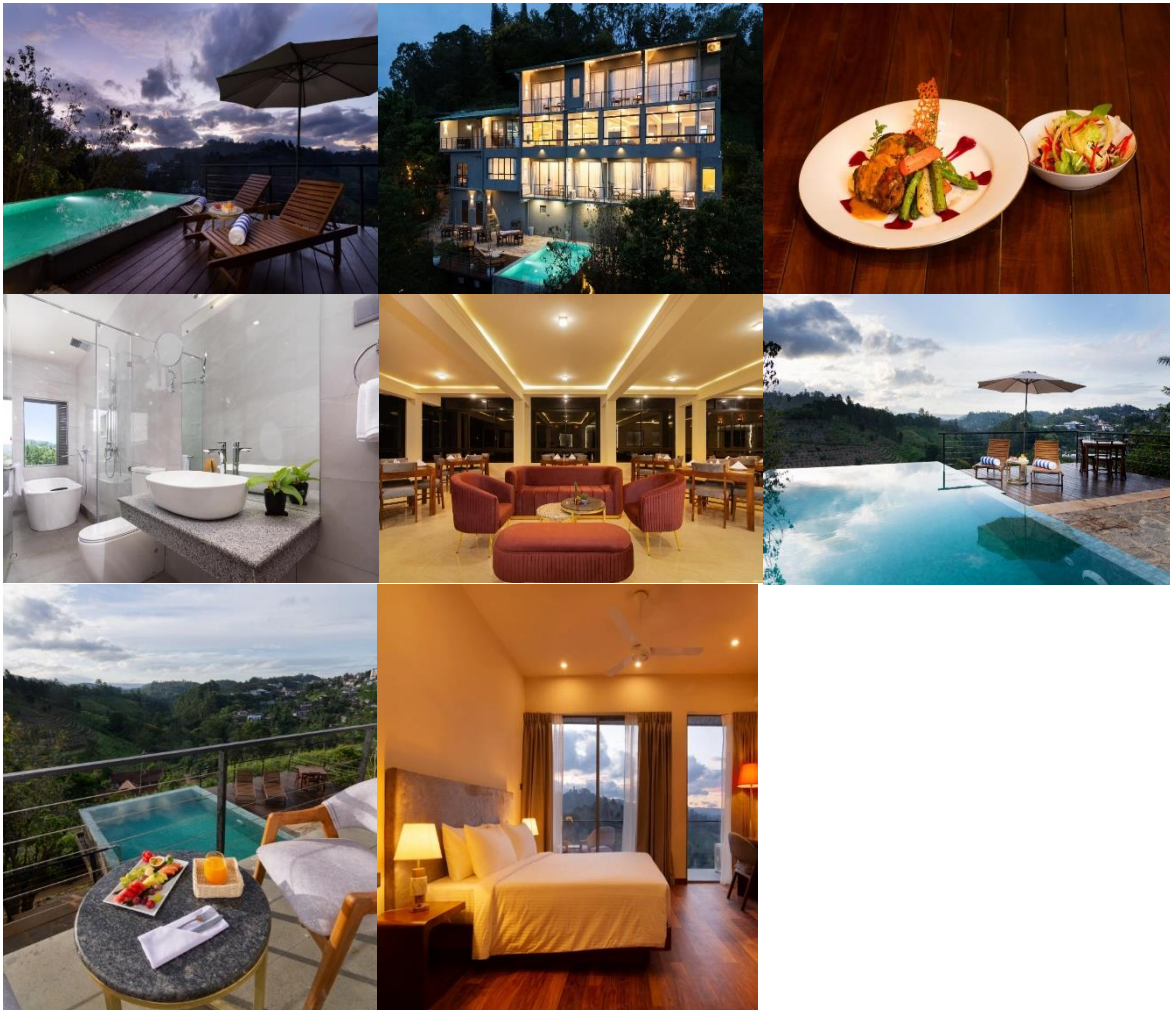
## Day 6-7: LUXR Kirindi Ella – Ratnapura

**LUXR Kirindi Ella** is a boutique luxury lodge nestled near the famous Kirindi Ella waterfall in Ratnapura. The property offers immersive nature experiences, personalized service, and a unique combination of comfort and eco-conscious design for discerning travelers.

**Star Rating:** 4 Star (Boutique)

### Amenities:

- Panoramic waterfall views
- Boutique-style suites
- Fine dining restaurant with local fusion cuisine
- Guided nature walks and waterfall tours
- Outdoor plunge pools
- In-room wellness services
- Eco-friendly architecture
- Wi-Fi and entertainment system
- Landmark, Mountain, and Pool Views
- Personalized excursions
- Infinity Pool with Mountain Views
- Air-Conditioned Rooms
- Room Service
- Tea/Coffee Maker in All Rooms
- Family Rooms Available
- Free Private Parking
- Paid Shuttle Service
- Children's Menu and Cots Available
- 24-Hour Security
- Laundry and Housekeeping Services





## Day 8-9: Villa Kele – Kataragama

**Villa Kele** is a nature-themed boutique villa located near the sacred town of Kataragama, offering a calm, rustic environment ideal for spiritual travelers and wildlife enthusiasts. With its earthy architecture and proximity to Yala and religious sites, it's a unique blend of comfort and cultural immersion.

**Star Rating:** 3 Star (Boutique)

**Amenities:**

- Forest-edge setting with abundant wildlife
- Sri Lankan fusion dining
- Rustic-chic, air-conditioned rooms
- Close proximity to Yala National Park and Kataragama temple
- Yoga and meditation spaces
- Outdoor seating and firepit areas
- Custom safari tours
- Free Wi-Fi
- Cultural experience packages



## Why Choose Us

- > **Tell us your travel dreams — we'll create your perfect itinerary within 24 hours**
- > **Our team of travel specialists has extensive knowledge and experience in crafting customized travel experiences.**
- > **We are dedicated to providing exceptional customer service from the moment you contact us until you return from your trip.**
- > **No matter, what the destination is, our diligent tour managers customize the trip as per budget and requirement.**

## Our Services

- Experienced local guidance
- 4-5 Star rating hotel booking
- Hotel pickup, Airport transfers
- Special tailor-made packages
- All Travel, Fuel, Entrance, Sightseeing and activities cost included.
- Family-friendly activities
- Adventure excursions
- Wildlife safaris
- Assistance with shopping and souvenirs
- Ticket booking for events



## CRAFT YOUR OWN JOURNEY WITH NO EXTRA COST



 **45 St. Mary's Road, London, W5 5RG**

 **office@azureislandtours.co.uk**

 [www.azureislandtours.co.uk](http://www.azureislandtours.co.uk)

 **+4479 2507 3959**

# Our Packages

## **ULTIMATE SRI LANKA**

16 Days 15 Nights Tour

## **GOLDEN ISLE RETREAT**

14 Days 13 nights Luxury Tour

## **ISLAND CHARM ON A BUDGET**

14 Days 13 nights Budget Tour

## **ISLAND ODYSSEY**

12 Days 11 Nights Tour

## **SERENE LUX GATEWAY**

7 Days 6 Nights Tour

## **SRI LANKA UNCOVERED**

10 Days 9 Nights Tour

## **AFFORDABLE ISLAND ESCAPE**

7 Days 6 Nights Budget Tour

## **A MYTHIC VOYAGE**

10 Days Historical Adventure Tour

## **RAMAYANA TOUR**

6 Days 5 Nights Tour

## **AYURVEDA RETREAT**

3 – 21 Nights Onward

## **EXTREME ADVENTURE**

10 Days Adventure Tour

## **LOVE IN PARADISE**

7 Days Honeymoon Tour

