



AFFORDABLE ISLAND ESCAPE

Bespoke Budget Tour For 7 Days, 6 Nights



At **Azure Island Tours**, we're dedicated to creating exceptional travel experiences that cater to your individual needs. Our team of travel experts takes the time to understand your preferences, ensuring every trip is unique, personalized, and hassle-free. Whether you're after adventure, relaxation, or cultural immersion, we design every detail with you in

BOOK NOW

DAY 01:

ARRIVAL IN COLOMBO | TRANSFER TO KANDY



> **TIME & ROUTE:** COLOMBO AIRPORT → PINNAWALA (APPROX. 2 HOURS) → KANDY (APPROX. 2 HOURS)

> **ACTIVITIES:**

- VISIT PINNAWALA ELEPHANT ORPHANAGE
- KANDY UPPER LAKE DRIVE AND VIEWPOINT
- KANDYAN CULTURAL DANCE SHOW

> **OVERNIGHT STAY:** OAK RAY SERENE GARDEN, KANDY

> **TOUR HIGHLIGHTS:** CULTURAL IMMERSION, SCENIC LAKE VIEWS, AND TRADITIONAL DANCE PERFORMANCES.

PINNAWALA ELEPHANT ORPHANAGE



- The Pinnawala Elephant Orphanage is a renowned wildlife sanctuary located in Sri Lanka, dedicated to the care and rehabilitation of orphaned or injured elephants. Visitors can witness these majestic animals up close as they bathe in the river, play, and interact with caretakers.

- The orphanage provides a safe environment for the elephants and focuses on their preservation. It's a popular stop for animal lovers and those seeking a unique cultural experience. With a chance to feed and even interact with the elephants, it offers a heartwarming and unforgettable experience for all ages.

DAY 02:

DAY TRIP TO SIGIRIYA



- > **TIME & ROUTE:** KANDY → SIGIRIYA (APPROX. 2.5 HOURS EACH WAY)
- > **ACTIVITIES:**
 - CLIMB SIGIRIYA ROCK FORTRESS (UNESCO WORLD HERITAGE SITE)
 - SIGIRIYA ANCIENT VILLAGE TOUR (BULLOCK RIDE, BOAT RIDE, AND LOCAL MEALS)
 - KAUDULLA OR MINNERIYA WILDLIFE SAFARI
- > **OVERNIGHT STAY:** OAK RAY SERENE GARDEN, KANDY
- > **TOUR HIGHLIGHTS:** HISTORICAL EXPLORATION, TRADITIONAL VILLAGE EXPERIENCE, AND WILDLIFE SAFARI.

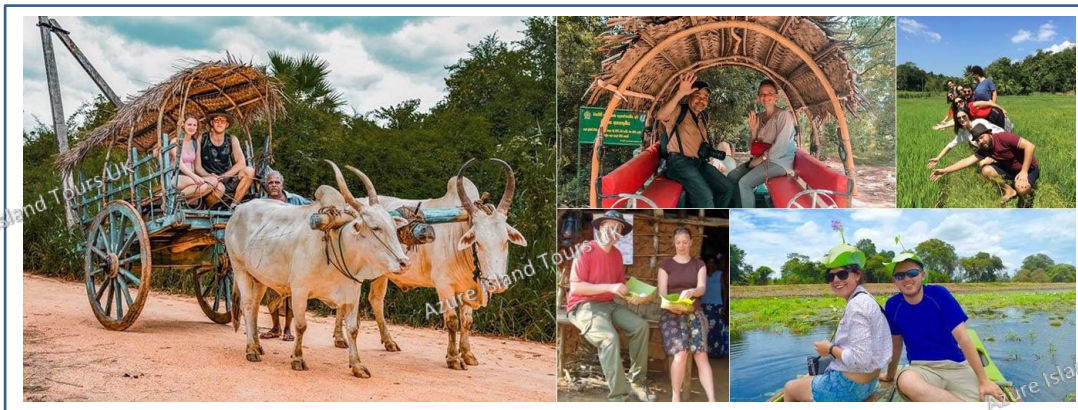
SIGIRIYA LION ROCK

- Sigiriya Lion Rock is an ancient rock fortress known for its massive column of rock that reaches nearly 200 meters high.
- The King Kasyapa (477-495 AD), who chose this site as his new capital built an impressive palace right on top of the rock column, accessible only through the mouth of an enormous carved lion.



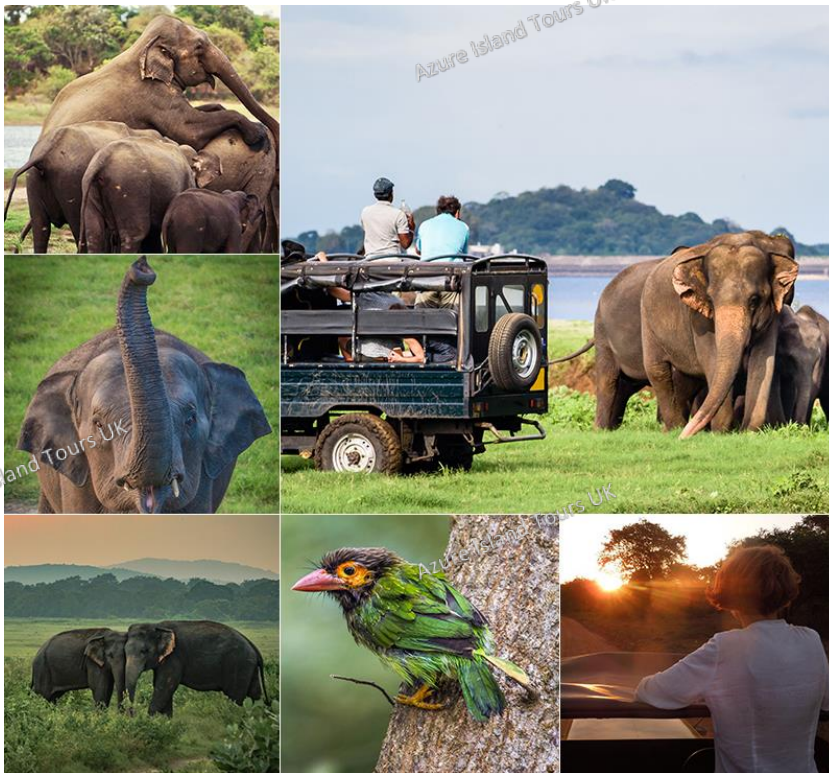
- A popular tourist destination Sigiriya is also renowned for its ancient paintings (frescos) which are reminiscent of the Ajanta caves of India. It is one of the seven world heritage sites of Sri Lanka. It is also declared by UNESCO as the 8th wonder of the world.

SIGIRIYA VILLAGE TOUR



- Step back in time with the Sigiriya Ancient Village Tour, where tradition comes to life. Experience the charm of rural Sri Lanka with a serene bullock ride, a tranquil boat journey, and a tuk-tuk or tractor adventure through lush fields. Savor authentic local flavors with a traditional complimentary meal and witness the delicate art of making sweet delicacies like kavum and kokis. This immersive journey offers a rare glimpse into the heart of Sri Lankan village life.

MINNERIYA/ KAVUDULLA JEEP SAFARI



▪ Minneriya and Kaudulla, famous for their large gatherings of elephants, especially during the iconic "Elephant Gathering."

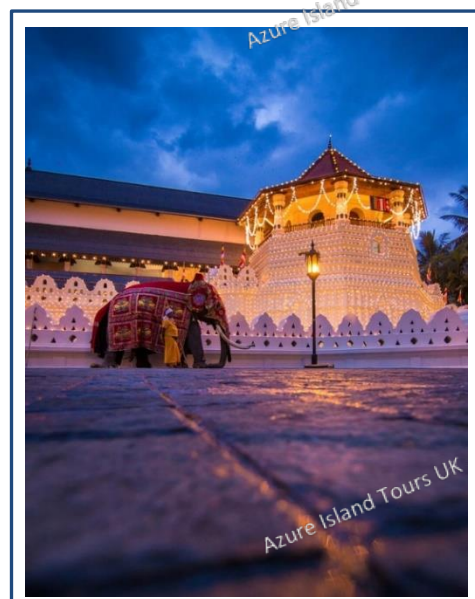
▪ Visitors can embark on jeep safaris to explore the lush landscapes teeming with diverse wildlife, including leopards, sloth bears, deer, and a variety of bird species.

- Habarana's safaris provide an excellent opportunity to witness Sri Lanka's rich biodiversity while immersing in the serenity of its natural beauty, making it a highlight for eco-tourism and adventure seekers.

DAY 03:

KANDY SIGHTSEEING TOUR | TRANSFER TO ELLA

- **TIME & ROUTE:** KANDY → ELLA (APPROX. 5 HOURS)
- **ACTIVITIES:**
 - VISIT TEMPLE OF THE SACRED TOOTH RELIC
 - EXPLORE THE SRI LANKAN NATURAL GEM MUSEUM
 - STROLL THROUGH ROYAL BOTANIC GARDENS, PERADENIYA
 - TOUR KADUGANNAWA TEA FACTORY TO LEARN ABOUT TEA PRODUCTION



- **OVERNIGHT STAY:** MORNING DEW, ELLA
- **TOUR HIGHLIGHTS:** SPIRITUAL AND CULTURAL SITES, TEA CULTURE, AND ARRIVAL IN SRI LANKA'S HILL COUNTRY.

THE TEMPLE OF TOOTH

- Temple of the sacred tooth relic, is a buddhist temple in kandy, sri lanka. It is located in the royal palace complex of the former kingdom of kandy, which houses the relic of the tooth of the buddha.
- The daily rituals performed for the sacred tooth relic is called “theva” or services, and there are three services. Early morning service, mid-day service and the evening service. It also includes traditional sound offerings



SRI LANKAN NATURAL GEM MUSEUM

- Step into the Sri Lankan Natural Gem Museum, where the earth's hidden treasures come to life. Marvel at dazzling sapphires, rubies, and other precious gems, each telling a story of the island's rich natural heritage.
- This captivating experience immerses you in the brilliance of Sri Lanka's famed gemstones, leaving you in awe of their timeless beauty and allure.



ROYAL BOTANIC GARDENS PERADENIYA



- This is a lush paradise where nature's beauty flourishes in every corner.

- Stroll through vibrant collections of plants, towering palms, and enchanting orchids, feeling the harmony of nature's delicate balance. With its serene landscapes and the rustle of leaves, the gardens offer a escape that leaves you in awe of Sri Lanka's botanical wonders.

KADUGANNAWA TEA FACTORY



- Kadugannawa Tea Factory Royal Botanic Gardens Peradeniya At the Kadugannawa Tea Factory, immerse yourself in the rich heritage of Sri Lanka's iconic tea industry.

- Breathe in the fragrant aroma of fresh tea leaves as you witness the delicate process of transforming them into the world-renowned Ceylon tea. This journey through tradition and flavor leaves you connected to the

heart of Sri Lanka, where every cup tells a story of the land and its people

DAY 04:

ELLA SIGHTSEEING TOUR | TRANSFER TO GALLE

- > **TIME & ROUTE:** ELLA → GALLE
(APPROX. 5 HOURS)

- > **ACTIVITIES:**

- HIKE LITTLE ADAM'S PEAK FOR PANORAMIC VIEWS
- VISIT NINE ARCH BRIDGE AND WATCH A TRAIN PASSING THROUGH THE LUSH SCENERY
- EXPLORE RAVANA FALLS AND PALLEWELA ELLA



OPTIONAL

- > FLYING RAVANA ZIPLINE
- > ELLA TOWN EXPLORATION
- > WATERFALL ABSEILING
- > NIL DIYA POKUNA

- > **OVERNIGHT STAY:** JETWING HERITAGE HOME, GALLE
- > **TOUR HIGHLIGHTS:** ICONIC NATURAL LANDMARKS, ADVENTUROUS ACTIVITIES, AND COASTAL ARRIVAL

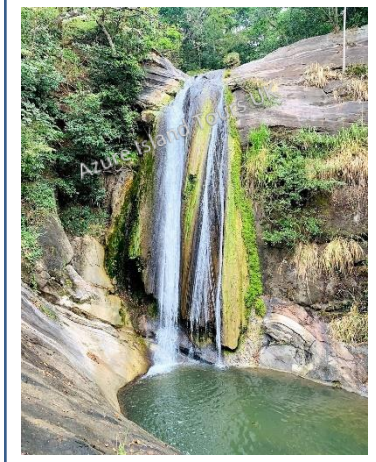
LITTLE ADAM'S PEAK

- Little Adam's Peak offers a captivating journey through tea plantations, with a gentle hike leading to breathtaking panoramic views of Ella's rolling hills and valleys.
- As you reach the summit, the beauty of the landscape surrounds you, filling you with a sense of peace and accomplishment. It's a perfect blend of adventure and serenity, where nature's splendor unfolds with every step.
- The hike to the top of Little Adam's Peak is fairly easy; the peak is 1141m high, so it is more of a two-hour-long leisurely walk

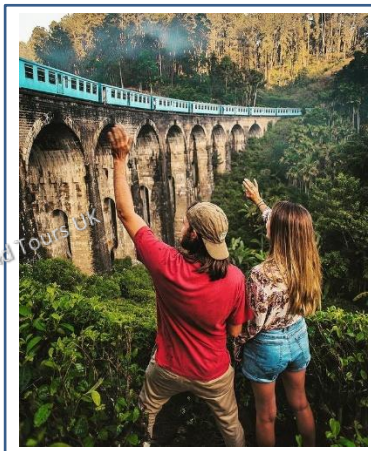


PALLEWELA ELLA

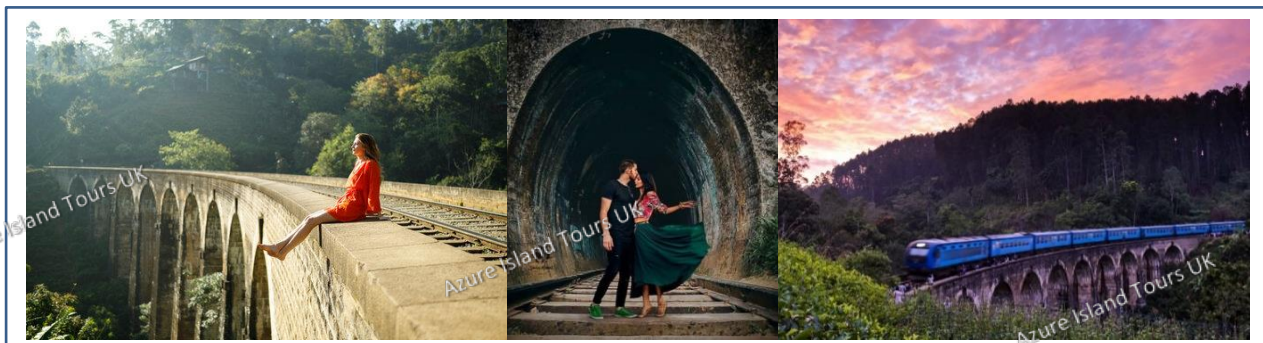
- Pallewela ella waterfall Surrounded by lush greenery, the waterfall cascades gracefully over rocky terrain, creating a serene atmosphere perfect for relaxation and nature photography.
- Its relatively remote location ensures a tranquil experience, away from the crowds often found at more popular waterfalls.
- Visitors can enjoy a refreshing dip in its natural pool, explore the surrounding forest, or simply bask in the unspoiled beauty of the area. Pallewela Ella is ideal for those looking to discover a hidden gem in Sri Lanka's countryside.



NINE ARCH BRIDGE



- The bridge was designed to accommodate a challenging nine-degree curve and steep gradient.
- Built entirely by local labor under British supervision, the construction faced significant logistical challenges, including difficult terrain, material transport.
- Completed in 1919, the bridge has since stood resilient, showcasing innovative engineering solutions such as concrete cornice blocks for arch support and locally produced sand-cement blocks for facing.



RAVANA ELLA WATERFALL



- Ravana Ella is a majestic waterfall that tumbles down rocky cliffs amidst lush greenery, creating a powerful yet serene spectacle. Steeped in legend, it's named after the mythical King Ravana and exudes an almost mystical energy.
- The cascading waters, surrounded by misty forests, offer a breathtaking view that immerses you in the beauty and mystery of Sri Lanka's wilderness.

NIL DIYA POKUNA (OPTIONAL)

- Pallewela Ella Nil Diya Pokuna is a hidden underground pool, nestled deep within a network of ancient caves. Its crystal-clear waters reflect the surrounding rock formations, creating an ethereal and tranquil atmosphere.
- This subterranean marvel, steeped in mystery, is said to be connected to ancient legends, offering visitors a glimpse into the mystical depths of Sri Lanka's history.



WATERFALL ABSEILING (OPTIONAL)

- Waterfall abseiling is a thrilling descent into nature's wild beauty, where you conquer towering cliffs with nothing but a rope and your courage.
- As you lower yourself down the cascading waterfall, the rush of cool water against your skin and the roar of the falls create an exhilarating, heart-racing experience. Each step down offers breathtaking views of the surrounding lush landscapes, leaving you with an unforgettable mix of adrenaline and awe.



FLYING RAVANA (OPTIONAL)

- The Flying Ravana zipline is an adrenaline-pumping adventure that soars high above the scenic landscapes of Ella.



- As Sri Lanka's longest zipline, it offers an exhilarating ride over lush tea plantations and deep valleys, with breathtaking views of Ella Gap and the surrounding mountains.
- The rush of wind and the thrill of flying make it a heart-pounding, unforgettable

experience, leaving you both invigorated and in awe of the stunning natural beauty below

DAY 05:

SOUTHERN COAST - TURTLES, WAVES, AND SUNSET ESCAPES

- > **TIME & ROUTE:** HIKKADUWA → GALLE (APPROX. 1 HOUR EACH WAY)
- > **ACTIVITIES:**
 - EXPLORE GALLE DUTCH FORT AND ITS COBBLESTONE STREETS AND LIGHTHOUSE
 - STROLL TO COCONUT TREE HILL FOR OCEAN VIEWS AND RELAX ON THALPE BEACH
 - VISIT A SEA TURTLE HATCHERY TO LEARN ABOUT CONSERVATION EFFORTS
 - UNWIND AT SEBU LOUNGE WITH STUNNING COASTAL VIEWS
- > **OVERNIGHT STAY:** JETWING HERITAGE HOME, GALLE
- > **TOUR HIGHLIGHTS:** COLONIAL HERITAGE, BEACH RELAXATION, AND MARINE CONSERVATION.

OLD TOWN OF GALLE AND ITS FORTIFICATIONS

- Founded in the 16th century by the Portuguese, Galle reached the height of its development in the 18th century, before the arrival of the British.



It is the best example of a fortified city built by Europeans in South and South-East Asia, showing the interaction between European architectural styles and South Asian traditions.

COCONUT TREE HILL

- **Coconut Tree Hill** is a stunning and iconic cliff located in **Mirissa**, Sri Lanka. Known for its breathtaking views, it features a picturesque grove of tall coconut trees perched atop a hill overlooking the turquoise waters of the Indian Ocean.
- This spot is particularly famous for its Instagram-worthy vistas and is a favorite among photographers and travelers seeking serene landscapes.
- Visitors can enjoy a peaceful walk under the swaying coconut palms, admire the sunrise or sunset, and take in the panoramic views of the coastline. Coconut Tree Hill offers a tranquil escape and is a must-visit for those exploring Sri Lanka's southern coastal charm.



THALPE BEACH



- Mirissa Beach is a slice of paradise where golden sands meet the shimmering blue of the Indian Ocean. As the waves crash gently against the shore, you'll feel the world fade away, replaced by a sense of pure freedom.

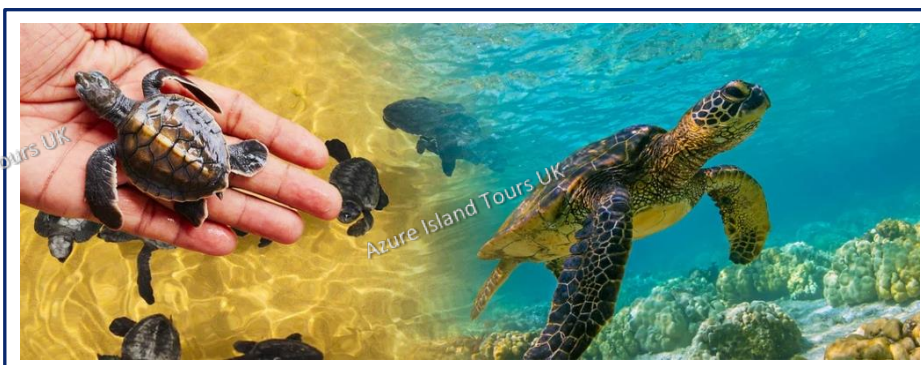
- Whether you're watching the sun dip below the horizon or spotting majestic whales, Mirissa is a place where nature's beauty takes your breath away and leaves your soul renewed.

SEA TURTLES CONSERVATION CENTER:

- Presently they are five species of Turtles that are taken care in the hatchery and rescue centre. Such species are the Olive Ridley turtles, Leatherback Turtles, Loggerheads Turtles, Hawksbill Turtles, and Green Turtles.



- The facilities of the sea turtle hatchery and rescue Centre are all state of the art, complete with water tanks to care new born Turtles along with adult Turtle species that have been rescued from the sea due to injury. One of the more peculiar sights in the centre is the area in which the Turtles lay their eggs as they have distinct little mounds of sand between one another. Each of these mounds is monitored closely to calculate the hatchery process of the turtle eggs.



MADU RIVER BOAT SAFARI (OPTIONAL)

Madu River is a complex coastal wetland ecosystem. Even though referred to as a river, it resembles more a lagoon or estuary in structure. Madu River which 770 Ha consist of open water while 145 Ha account for 64 small islands.



- Madu River complex is a very rich bio diversified hot spot and sensitive eco system with ecological significances which higher than any other coastal eco systems island wide.



- Total of 11 species of agnatic mollusks and 14 land dwelling mollusks are found in this system. 70 species of fish, 31 types of reptiles, and 50 kinds of butterflies are some of the colorful array of wildlife that inhabits this ecosystem.

WHALE WATCHING (OPTIONAL)

- Whale Watching in Sri Lanka is a breathtaking experience where you witness the majestic giants of the ocean up close. As blue whales and playful dolphins emerge from the deep, the awe and wonder of nature's power fill you with excitement and amazement.

- Each moment spent on the water brings a new thrill, creating memories of an unforgettable encounter with the ocean's magnificent creatures.



WATER ACTIVITIES (OPTIONAL)

- Dive into the excitement of water sports in Sri Lanka's crystal-clear waters! Feel the adrenaline rush as you speed across the waves on a Jet Ski, paddle through serene lagoons while canoeing, and explore vibrant underwater worlds with snorkelling and scuba diving.
- Hold on tight for a thrilling banana ride, and cast your line for the ultimate adventure of deep sea fishing. Each activity promises an exhilarating blend of adventure, fun, and unforgettable moments on the water.



DAY 06:

COLOMBO CITY SIGHTS & SHOPPING



- **TIME & ROUTE:** HIKKADUWA → COLOMBO (APPROX. 2.5 HOURS)
- **ACTIVITIES:**
 - VISIT GANGARAMAYA TEMPLE, A SERENE BUDDHIST SANCTUARY
 - EXPLORE HAVELOCK CITY MALL FOR SHOPPING AND DINING
 - ASCEND THE LOTUS TOWER FOR PANORAMIC CITY VIEWS
 - WANDER THROUGH PETTAH FLOATING MARKET AND ENJOY THE VIBRANT ATMOSPHERE
 - END THE DAY AT GALLE FACE GREEN WITH A PEACEFUL SUNSET STROLL
- **OVERNIGHT STAY:** CINNAMON RED, COLOMBO
- **TOUR HIGHLIGHTS:** URBAN EXPLORATION, CULTURAL LANDMARKS, AND SCENIC COASTAL RELAXATION.

HAVELOCK CITY MALL

- Havelock City Mall is more than just a shopping destination—it's an experience that awakens your senses. With its vibrant mix of fashion, dining, and entertainment, every visit feels like a journey into excitement and discovery.
- Step inside, and you're surrounded by energy and style, where the pulse of the city meets a world of endless possibilities.



GANGARAMAYA TEMPLE

- Gangaramaya Temple is a sanctuary of peace and spirituality, where ancient traditions and vibrant culture come together in perfect harmony.
- As you wander through its sacred halls, the air feels alive with devotion, and the serene waters of the nearby Beira Lake evoke a deep sense of inner calm. It's a place where your spirit is uplifted, and the essence of Sri Lanka's rich spiritual heritage surrounds you.



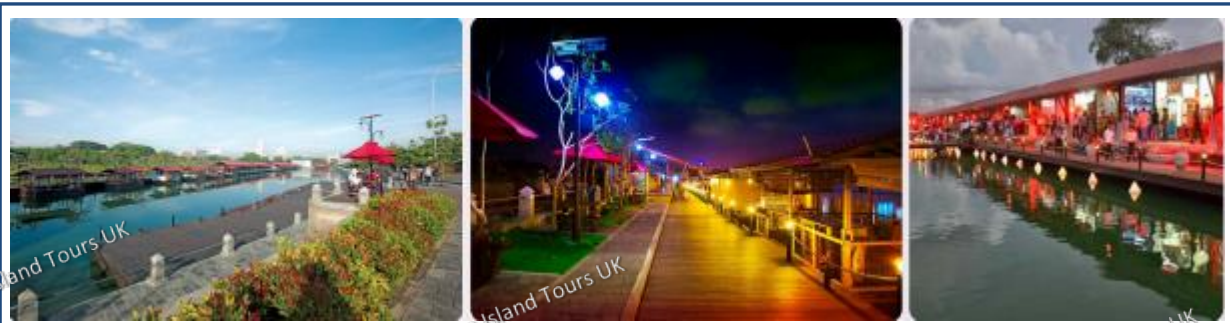
LOTUS TOWER

- The Lotus Tower rises majestically above Colombo, a symbol of modern Sri Lanka's bold spirit and ambition. Its striking design mirrors the beauty of a lotus in bloom, while offering panoramic views that take your breath away.
- As you ascend, you'll feel a surge of awe and wonder, standing at the pinnacle of the city, where innovation meets natural beauty in perfect harmony.



PETTAH FLOATING MARKET

- The Pettah Floating Market is a vibrant blend of culture and commerce, where colorful stalls line the waters, offering everything from local crafts to fresh produce.
- As you wander through, the lively atmosphere and shimmering reflections create a sensory experience like no other, capturing the essence of Colombo's bustling spirit.



DAY 07:

Azure Island Tours UK

- 1 HOUR)



TOUR HIGHLIGHTS

Day 1: Arrival, visit Pinnawala Elephant Orphanage, Kandy Lake Drive with Kandyan dance show.

Day 2: Climb Sigiriya Rock Fortress, explore Sigiriya Ancient Village, Kavudulla /Minneriya wild life safari.

Day 3: Explore Temple of the Sacred Tooth Relic, Gem Museum, Peradeniya botanical garden, Kadugannawa tea factory

Day 4: Hike Little Adam's Peak, Nine Arch Bridge, Pallewela ella, Ravana Ella
Optional

- Flying Ravana Zipline.
- Ella town exploration
- Waterfall abseiling
- Nil diya pokuna

Day 5: Visit Galle Dutch Fort, Mirissa Beach, Coconut Tree Hill, Sea Turtle Hatchery Center and Sebu lounge.

Optional

- Madu river boat ride
- Whale watching
- Water Sports

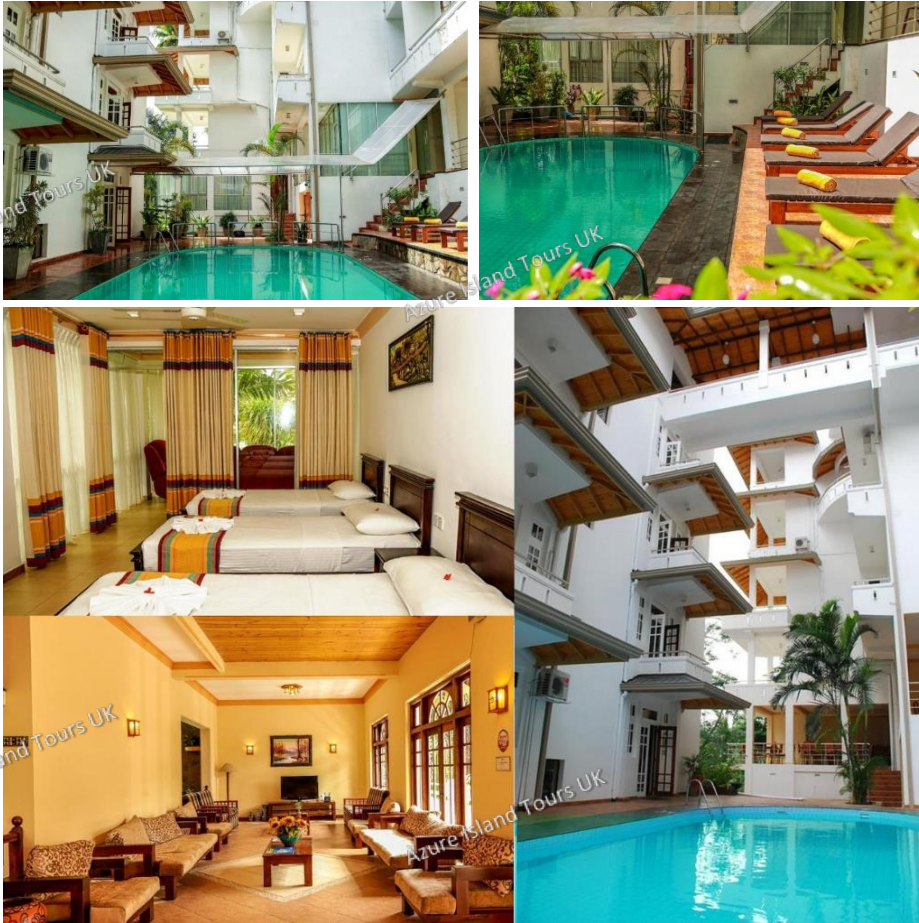
Day 6: Colombo city tour: Pettah floating Market, Lotus Tower, and Gangaramaya Temple, havelock city mall, Galle face.

Day 7: Departure from Colombo.

HOTEL DETAILS

Day 1-2: Kandy – Oak Ray Serene Garden

Oak Ray Serene Garden offers a serene escape in Kandy with its prime location near Kandy Lake. The hotel ensures a comfortable stay with modern amenities and proximity to key attractions.



Star Rating: 4 Star

Amenities:

- Outdoor swimming pool
- On-site restaurant serving local and international cuisine
- Bar & lounge
- Free Wi-Fi in public areas
- Private balconies with scenic views
- Air-conditioned rooms with modern amenities
- 24-hour front desk and concierge services

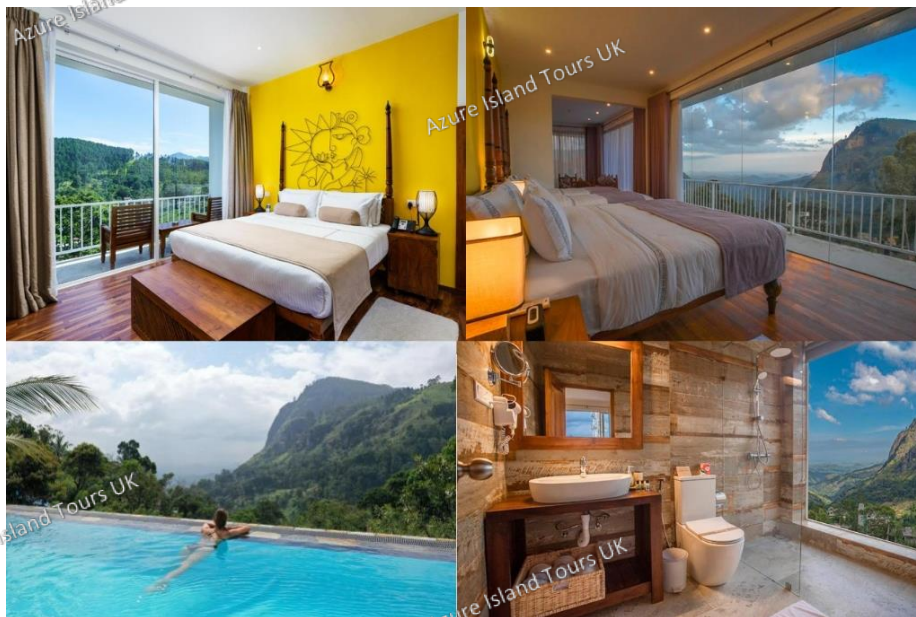
Day 3: Ella – Morning Dew

Morning Dew Hotel, perched in the scenic hill town of Ella, offers a tranquil escape surrounded by breathtaking mountain vistas. The hotel combines modern comfort with natural beauty, making it an ideal base for relaxation or exploration



. Guests can enjoy spacious rooms with private balconies, savor local and international flavors at the on-site restaurant, and experience the charm of Ella's attractions nearby.

Star Rating: 4 Star



Amenities:

- Outdoor pool
 - On-site restaurant
 - Bar & lounge
 - Concierge services
 - Breathtaking Views
 - Bike and car rental services
 - Complimentary Wi-Fi
 - 24-hour room service
 - Sustainably Designed Architecture
-

Day 4-5: Galle – Jetwing Heritage House

Jetwing Heritage Home in Galle offers an intimate retreat that beautifully blends modern comforts with timeless colonial charm. Set within a tranquil heritage property, With its warm Sri Lankan hospitality, the home delivers a uniquely personalized experience amidst its elegant surroundings, celebrating both history and luxury



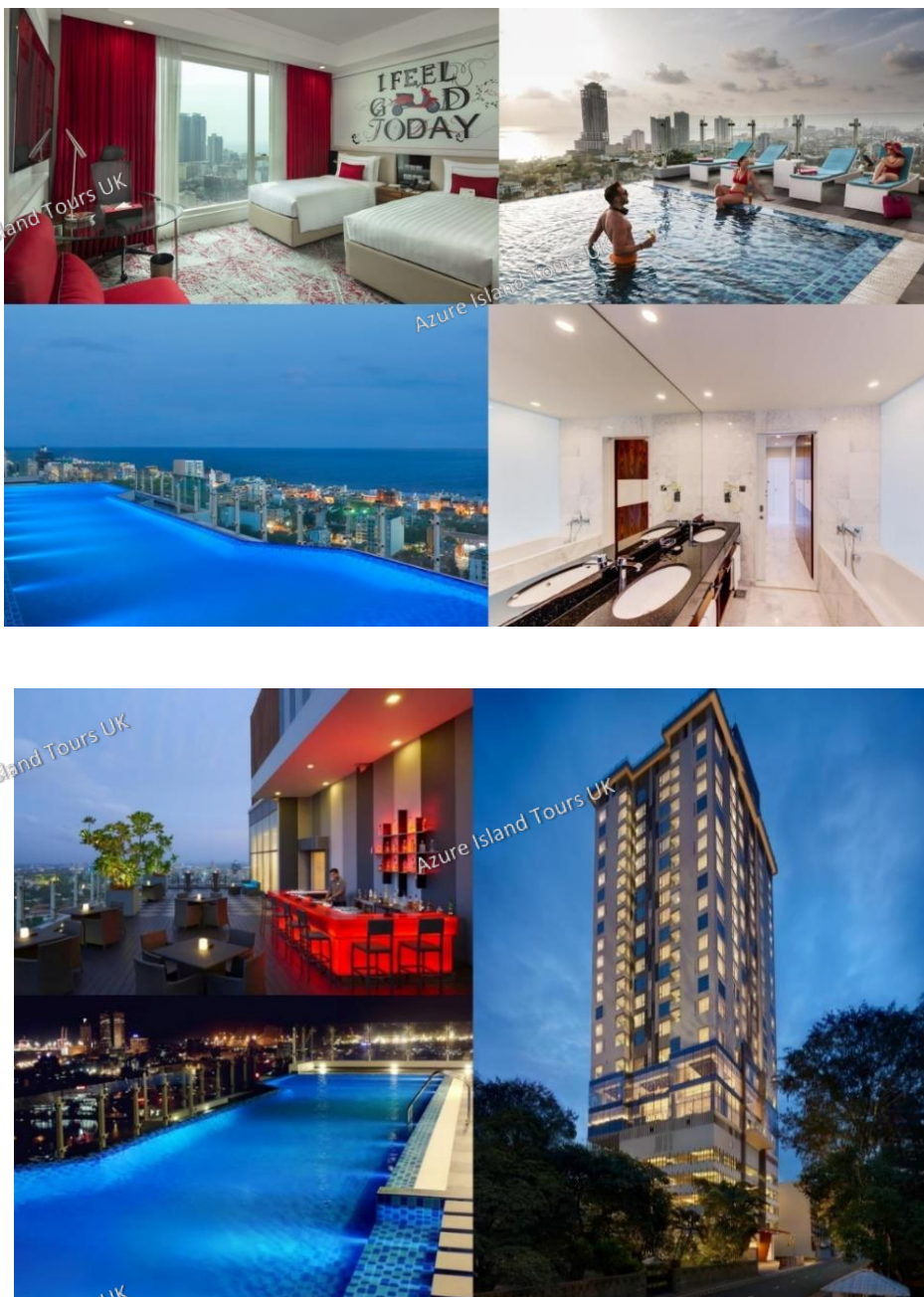
Star Rating: 4 Star

Amenities:

- Outdoor pool with sun terrace
- Beach access with private lounging area
- On-site fine dining restaurant and bar
- Free Wi-Fi in all areas
- Air-conditioned rooms with mini-bar and tea/coffee facilities
- 24-hour front desk
- Daily housekeeping and laundry services

Day 13: Colombo – Cinnamon Red Colombo

Nestled in the bustling heart of Colombo, Cinnamon Red offers a modern and stylish escape for travelers. This hotel combines contemporary design with exceptional service, providing a perfect base for both relaxation and exploration. With stunning views of the city and easy access to local attractions, guests can enjoy a vibrant urban experience while indulging in the comforts of this elegant retreat.



Cinnamon Red Colombo is a contemporary city hotel offering stylish accommodations and panoramic city views, perfect for a relaxing end to your tour.



Star Rating: 4 Star

Amenities:

- Rooftop infinity pool with skyline views
- Rooftop bar and all-day dining restaurant
- Fitness center with modern equipment
- High-speed free Wi-Fi throughout the property
- Air-conditioned rooms with smart TVs and mini-bar
- 24-hour concierge services
- Secure parking and airport transfer options

INCLUDED EXCURSIONS FOR THE TOUR

- | | |
|--|---|
| <ul style="list-style-type: none"> ▪ Pinnawala Elephant Orphanage ▪ Kandy Upper Lake Drive ▪ Kandyan Cultural Dance Show ▪ Temple of the Sacred Tooth Relic ▪ Pidurangala Rock Sunset ▪ Sigiriya Rock Fortress ▪ Sigiriya Village Tour and Cooking Demonstration ▪ Ayurveda Spa Treatment ▪ Dambulla Cave Temple ▪ Minneriya/Kawudulla Wildlife Safari ▪ Anuradhapura Sacred City Tour (Jaya Sri Maha Bodhi, Ruwanwelī Maha Seya, Isurumuniya Temple) ▪ Thirukoneswaram Kovil ▪ Marble Beach and Uppuveli Beach ▪ Pigeon Island Snorkeling | <ul style="list-style-type: none"> ▪ Nilaveli Beach Relaxation ▪ Pasikudah and Kalkudah Beaches ▪ Batticaloa Fort ▪ Pottuvil Lagoon Safari ▪ Kumana National Park Safari ▪ Calypso Train Ride (Ella Highlands) ▪ Little Adam's Peak Hike ▪ Nine Arch Bridge Visit ▪ Pallewela Ella Waterfall ▪ Kosgoda Sea Turtle Hatchery ▪ Madu River Boat Safari ▪ Coconut Tree Hill (Mirissa) ▪ Dewata Beach Surfing ▪ Galle Fort Exploration ▪ Colombo City Tour (Gangaramaya Temple, Pettah Market, Shopping). |
|--|---|

OPTIONAL:

1. **Flying Ravana Zipline** - An adrenaline-pumping zipline adventure in Ella.
2. **Waterfall Abseiling** - Descending cliffs near waterfalls in Ella for a thrilling experience.
3. **Nil Diya Pokuna Excursion** - Exploring an underground pond in Ella (optional activity).
4. **Water Sports** - Jet skiing, canoeing, snorkeling, scuba diving, banana rides, and deep-sea fishing.
5. **Whale Watching** - Witnessing majestic whales and playful dolphins at sea.
6. **Madu River Safari** - A boat journey through mangrove forests with wildlife spotting.

